



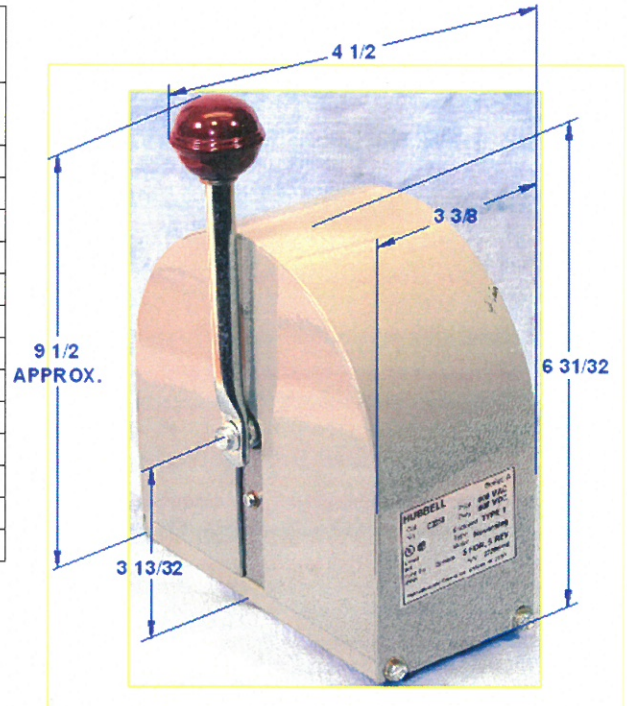
Replacement Parts

HCC3258 PUBL. #229

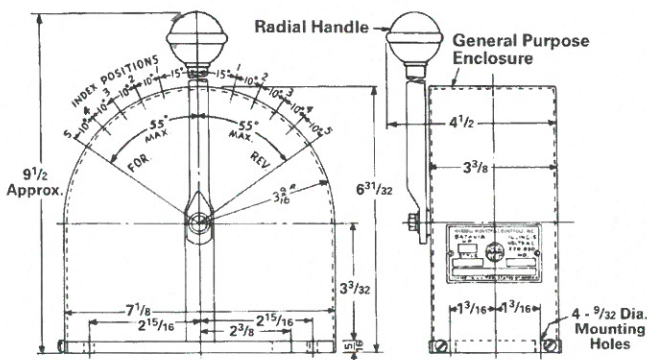
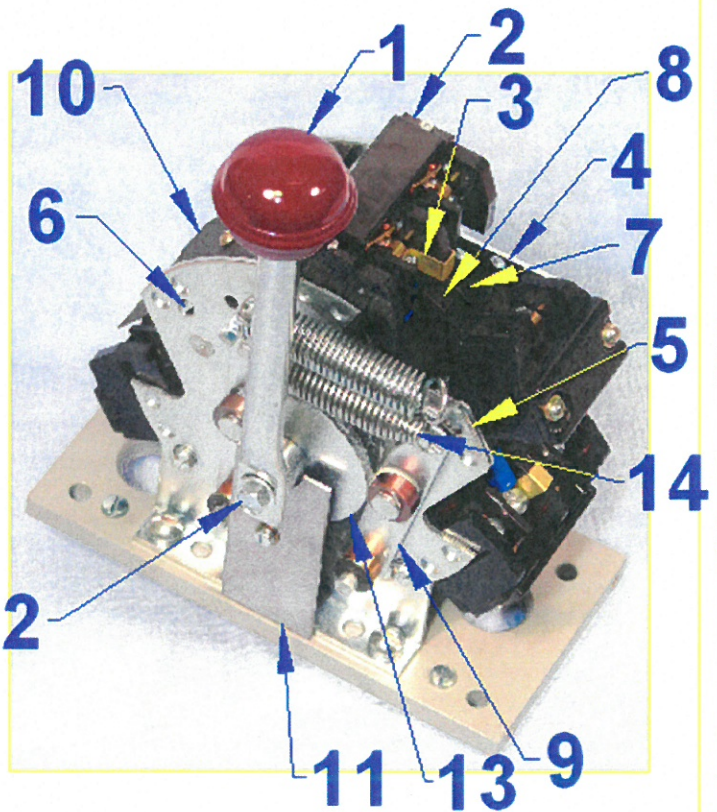
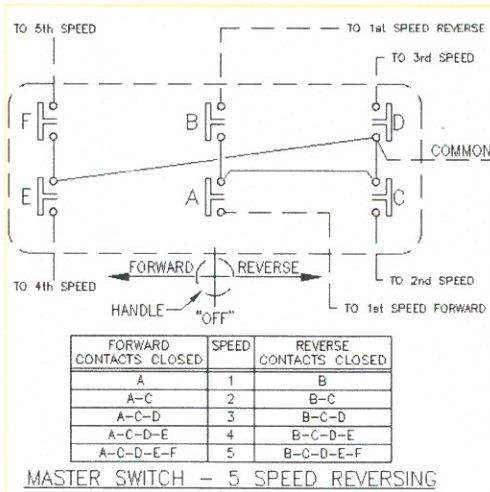
Master Switch
C3258

Jan 2009

	NAME OF PART	PCS REQD	PART NO.
1	Complete Handle Assembly	1	D07120001
	Handle Knob Only	1	D26842001
2	Contact Board Assembly	3	D72145008
3	Jumper	1	D00684003
4	Frame Plate Assembly (Rear)	1	D07192001
5	Frame Plate Assembly (Front)	1	D09538003
6	Stiffening Bars	1	D07143001
7	Bakelite Cam	1	D01900005
8	Bakelite Cam	1	D01900006
9	Lever Assembly	1	D07121002
10	Shield	1	D07144001
11	Slot Cover	1	D07134001
12	Cap Screw Hex., 1/4-20 x 1/2"	1	S00195003
13	Index Cam	1	D09539001
14	Index Spring	1	D07164002



CONNECTION DIAGRAM



Ref. D1794

Hubbell Industrial Controls, Inc. 4301 Cheyenne Drive, Archdale, NC 27263 (336) 434-2800
FAX (336) 434-2803