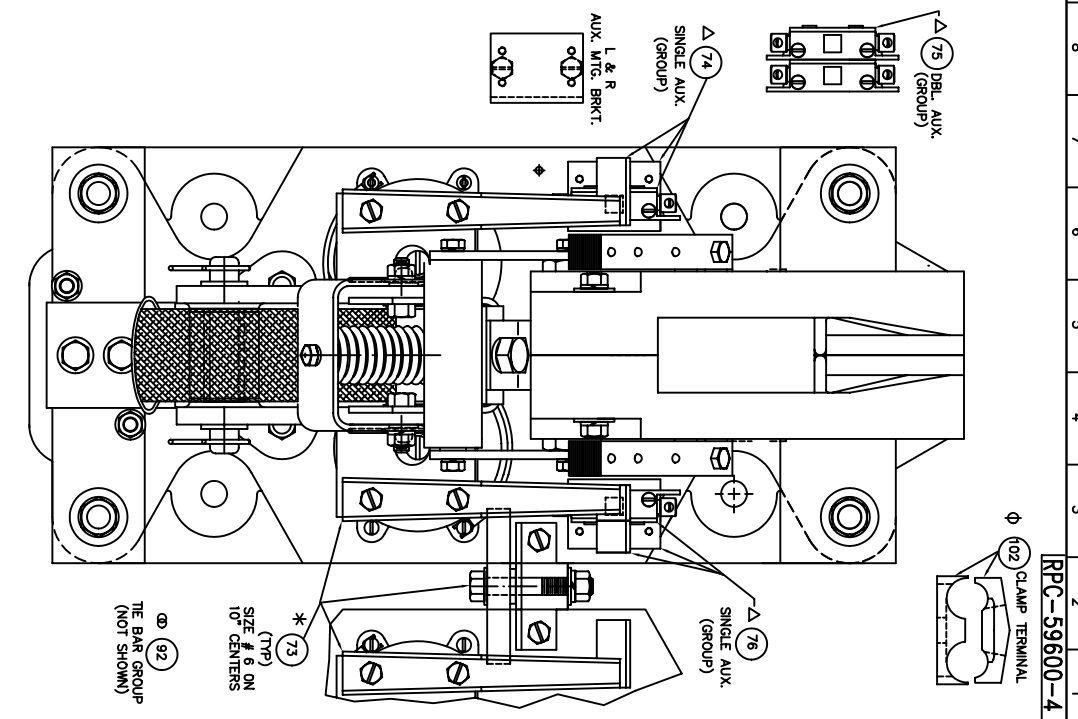


NOTE: WHEN ORDERING REPAIR PARTS BE SURE TO FURNISH SERIAL NUMBER & TYPE NUMBER WHICH ARE LOCATED ON THE NAMEPLATE. ALSO PART NAME AND PART NUMBER.

ITEM	DESCRIPTION	QTY	PART NO.
1	CONTACT TIP	2	SEE CHART
2	SHUNT ASSEMBLY	1	59605-611
3	TERMINAL BUSS	1	59390-602
4	ARMATURE SUPPORT ASSEMBLY	1	59609-620
5	ARMATURE ASSEMBLY	1	59608-620
6	ARMATURE ASSEMBLY	1	59608-620
7	ARMATURE ASSEMBLY	1	59608-620
8	ARMATURE HINGE PIN	1	59649-002
9	CONTACT REST YOKE	1	59607-000
10	SPRING	1	67981-009
11	SPRING	1	59608-000
12	HOLDER ARM HINGE PIN	1	59649-011
13	500-13 X 1.25 LG. S.S. HEX HEAD SCREW	2	47252-042
14	500-13 X 1.25 LG. S.S. HEX HEAD SCREW	2	47252-042
15	500-13 X 1.25 LG. S.S. HEX HEAD SCREW	2	47246-103
16	3/12-18 X 1.00 LG. HEX HEAD SCREW	2	47246-103
17	3/75 S.S. FLAT WASHER	2	47250-285
18	3/75 S.S. FLAT WASHER	2	47250-285
19	3/12-18 X 1.00 LG. S.S. HEX HEAD SCREW	5	47253-603
20	3/12-18 X 1.00 LG. S.S. HEX HEAD SCREW	2	47246-082
21	3/12 LOCK WASHER	8	47252-039
22	3/12-18 HEX NUT	6	47253-602
23	SPRING HUB	1	66837-002
24	250 LOCK WASHER	3	47252-039
25	250-20 X .50 LG. SLOTTED HEX HEAD SCREW	1	47246-081
26	BLOWOUT COIL ASSEMBLY	1	59693-601
27	BLOWOUT GUARD	1	59694-801
28	ARC TRANSFER TIP	1	59692-601
29	BLOWOUT CORE INSULATOR	1	59689-802
30	BLOWOUT INSULATION WASHER	2	59687-000
31			
32	SUPPORT PLATFORM	1	59583-000
33	SUPPORT SPACER	3	66870-041
34	250-20 HEX NUT	2	47253-021
35	#10-32 X .75 LG. BRASS FLAT HEAD SCREW	2	47665-090
36	250-20 X .62 LG. FLAT HEAD SCREW	2	47665-108
37	250-20 X .50 LG. BRASS FLAT HEAD SCREW	2	59610-000
38	250-20 X .50 LG. BRASS FLAT HEAD SCREW	2	59610-000
39	250-20 X .50 LG. BRASS FLAT HEAD SCREW	2	59610-000
40	250-20 X .50 LG. BRASS FLAT HEAD SCREW	2	59610-000
41	250-20 X .50 LG. BRASS FLAT HEAD SCREW	2	59610-000
42	250-20 X .50 LG. BRASS FLAT HEAD SCREW	2	59610-000
43	250-20 X .50 LG. BRASS FLAT HEAD SCREW	2	59610-000
44	250-20 X .50 LG. BRASS FLAT HEAD SCREW	2	59610-000
45	250-20 X .50 LG. BRASS FLAT HEAD SCREW	2	59610-000
46	250-20 X .50 LG. BRASS FLAT HEAD SCREW	2	59610-000
47	250-20 X .50 LG. BRASS FLAT HEAD SCREW	2	59610-000
48	250-20 X .50 LG. BRASS FLAT HEAD SCREW	2	59610-000
49	250-20 X .50 LG. BRASS FLAT HEAD SCREW	2	59610-000
50	250-20 X .50 LG. BRASS FLAT HEAD SCREW	2	59610-000
51	250-20 X .50 LG. BRASS FLAT HEAD SCREW	2	59610-000
52	250-20 X .50 LG. BRASS FLAT HEAD SCREW	2	59610-000
53	250-20 X .50 LG. BRASS FLAT HEAD SCREW	2	59610-000
54	250-20 X .50 LG. BRASS FLAT HEAD SCREW	2	59610-000
55	250-20 X .50 LG. BRASS FLAT HEAD SCREW	2	59610-000

56	250-20 S.S. LOCK WASHER	2	47252-238
57	3/12-18 S.S. HEX NUT	2	47796-103
58	BRACKET	2	59580-000
59			
60			
61			
62	3/12-18 X 3/75 LG. BRASS STUD	3	57458-047
63			
64	3/12 BRASS FLAT WASHER	4	47251-012
65	3/12-18 BRASS HEX NUT	6	47253-013
66	3/12-18 X 3/75 LG. HEX HEAD SCREW	1	47246-555
67	3/12-18 HEX NUT ESN	1	47301-013
68	HEX HD CAP SCR 1/2-13 X 2-3/4 LG.	4	47246-538
69	500 LOCK WASHER	4	47252-516
70	500 LOCK WASHER	4	47252-042
71	500-13 FULL HEX NUT	4	47253-905
72	MOLDED BASE ASSEMBLY	1	59576-800
73	MECHANICAL INTERLOCK ASSEMBLY (SIZE 6 ONLY)	1	59625-006
74	MECHANICAL INTERLOCK ASSEMBLY (SPL)	1	59625-009
75	PLUNGER AUXILIARY (SINGLE L.H.) GROUP	1	59620-006
76	PLUNGER AUXILIARY (DOUBLE L.H.) GROUP	1	59620-066
77	PLUNGER AUXILIARY (SINGLE R.H.) GROUP	1	59620-108
78	PLUNGER AUXILIARY (DOUBLE R.H.) GROUP	1	59620-168
79	COMPLETE ARC SHIELD ASSEMBLY	1	59692-811
80	3/12-18 X 1.25 LG. HEX HEAD SCREW	4	47246-082
81	3/75-16 X 1.75 LG. HEX HEAD SCREW	2	47246-106
82	3/75-16 X 4.00 LG. HEX HEAD SCREW	2	47246-117
83	3/75-16 X 4.50 LG. HEX HEAD SCREW	2	47246-514
84	500-13 X 1.50 LG. S.S. HEX HEAD SCREW	2	47779-110
85	750 EXTERNAL TOOTH RETAINING RING	2	57429-026
86	875 EXTERNAL TOOTH RETAINING RING	2	57429-027
87	BASE	1	59576-803
88	SPACER (QTY. 4) OR AS REQUIRED	1	66870-040
89	HAIR PIN COTTER	2	57403-005
90	HAIR PIN COTTER	2	57403-006
91	3/12 S.S. LOCK WASHER	8	47252-239
92	THE BAR GROUP SIZE 6 ONLY (NOT SHOWN)	1	59400-026
93			
94			
95			
96			
97	3/75 FLAT WASHER	1	47250-020
98	CHAMP TERMINAL	2	57513-068
99	CONTROL WIRE #14 X 9.25 LG.	1	8211410614
100	ARC SHIELD SPACER	2	67988-006
101	CLAMP TERMINAL (QTY. 4) OR AS REQUIRED	2	57500-058
102	AC CORE ASSEMBLY	1	59631-000
103	AC SIDE ARM ASSEMBLY	1	59632-000
104	SUPPORT BAR (AC SIDE ARMS)	1	59630-800
105	250-20 X 1.25 LG. HEX HEAD SCREW	2	47246-068
106	AC BLOWOUT CORE ASSEMBLY	1	59630-800
107			
108			



NOTES: \* Δ ⊙ ⊖ ⊕ (NOT INCLUDED WITH COMPLETE CONTACTOR ASSEMBLY).

\* ITEM 73 MECHANICAL INTERLOCK ASSEMBLY PART NO. 59625-006 (ORDERED SEPARATELY).

Δ ITEM 74,75,76,77 PLUNGER AUXILIARY GROUP (INCLUDING KNOCKER, BRACKET, AND MTG. HARDWARE) (ORDERED SEPARATELY).

⊙ ITEM 73A SPECIAL INTERLOCK BAR ASSEMBLY; USED ONLY WHEN CONTACTORS ARE SPACED AT 11.00" CENTERS. (ORDERED SEPARATELY).

⊖ ITEM 92 THE BAR GROUP SIZE 6 ONLY (10" MTG. CENTERS) (NOT SHOWN) (ORDERED SEPARATELY).

⊕ ITEM 102 CLAMP TERMINAL P/N 57300-058 1/0, 300 MOM (ORDERED SEPARATELY).

⊙ ITEM 87 SPACER USED ONLY WHEN POWER CRIMP TERMINALS ARE USED. (ORDERED SEPARATELY).

REV	DATE	BY	DESCRIPTION
A	2-22-00	TJL	UNPATED DRAWINGS

REV	DATE	BY	DESCRIPTION
A	2-22-00	TJL	UNPATED DRAWINGS

LINE	QUANTITY	UNIT	AMOUNT
0.1X	=4.000	DINCH	5.002
0.2X	=4.000	DINCH	5.100
0.3X	=3.005	DINCH	3.900
0.4X	=3.005	DINCH	3.900
0.5X	=3.005	DINCH	3.900
0.6X	=3.005	DINCH	3.900
0.7X	=3.005	DINCH	3.900
0.8X	=3.005	DINCH	3.900
0.9X	=3.005	DINCH	3.900

REPAIR PARTS BULLETIN 5110  
MOLDED BASE FRONT REMOVABLE  
600 AMP, 1 POLE, N.O.,  
AC CONTACTOR, SIZE 6

DATE: 06/13/96 DR. WSJ

DRG. NO. **RPC-59600-4**

2 OF 2