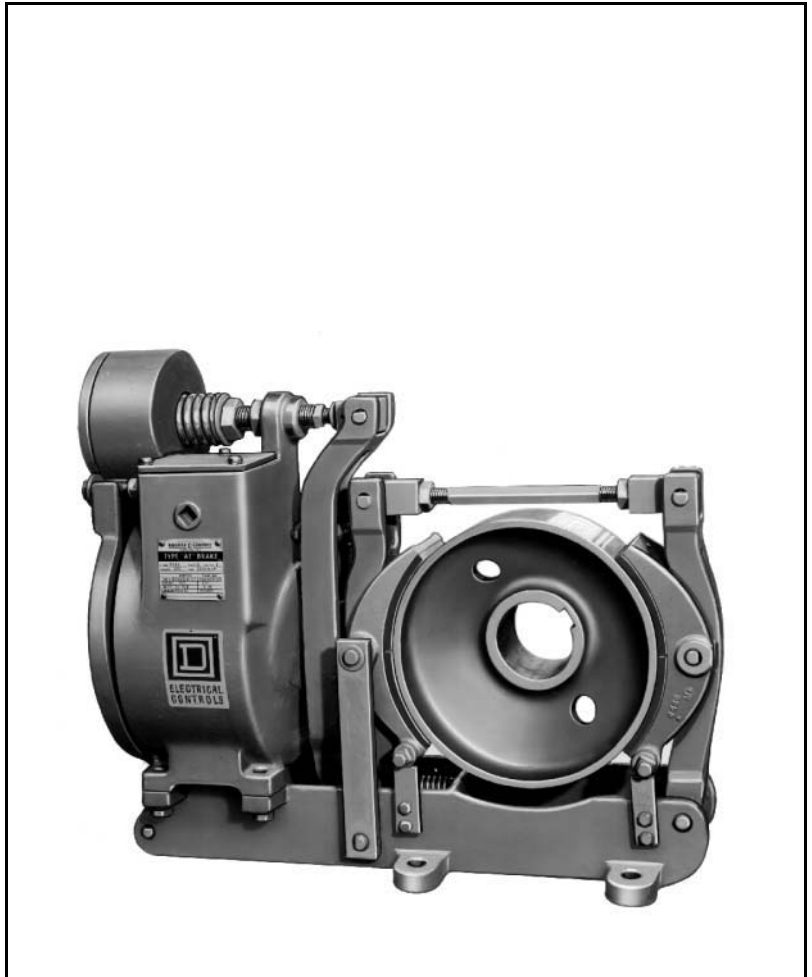


# Crane Control Class 5060

## Catalog Subtitle

Catalog

# 03



### CONTENTS

Description .....	Page
Pricing and Ordering Information .....	36
Application Data and Wiring Diagrams .....	38
Dimensions and Weights .....	40



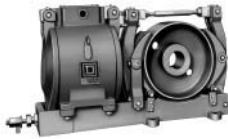
The Electric Controller and  
Manufacturing Company, LLC

CRANE CONTROL  
CLASS 5060

# Crane Control Class 5060 Adjustable Torque Drum Brakes



Class 5060  
Type A1001  
10" Brake



Class 5060  
Type A1301  
13" Brake



Class 9002  
Type AT4  
Foot Switch



Class 9002  
Type AW21  
Foot Switch

## PRICING AND ORDERING INFORMATION

Adjustable torque brakes are dual purpose drum type friction brakes. They combine an electrically released, spring set holding brake feature and an electrically operated adjustable torque stopping feature. They can be used with AC or DC motors.

- All electrically controlled
- Smooth, controlled stopping feature
- Spring set parking feature

A complete adjustable torque brake system consists of:

- 1 – Or more adjustable torque brakes
- 1 – Enclosed controller
- 1 – Push button station
- 1 – Foot switch

### Adjustable Torque Brakes

Brake Size (Wheel dia. in inches)	For Simplex Brake System (One Brake)	For Duplex Brake System (Two Brakes)	For Quadraplex Brake System (Four Brakes)	Price Per Brake With Standard Wheel	Price Per Brake Without Standard Wheel
	Type	Type	Type		
10	A1001	A1001	A1001	\$ 14841.	\$ 13518.
13	A1301	A1301	A1304	21239.	19274.
16	A1601	A1601	A1601	23907.	21122.

### DC Controllers for Adjustable Torque Brakes

VDC	Brake Size (Wheel dia. in inches)	For Simplex Brake System		For Duplex Brake System		For Quadraplex Brake System	
		Outdoor Enclosure NEMA Type 3R		Outdoor Enclosure NEMA Type 3R		Outdoor Enclosure NEMA Type 3R	
		CONTROLLER		CONTROLLER		CONTROLLER	
		Type	Price	Type	Price	Type	Price
230	10	ADW101	\$ 7092.	ADW102	\$ 7092.	ADW104	\$ 11129.
	13	ADW131	7452.	ADW132	7452.	ADW134	11129.
	16	ADW161	8762.	ADW162	8762.	ADW164	11129.

### AC Controllers for Adjustable Torque Brakes - consult factory

#### Set-Release Push Button Stations

Class	Type	Price ▲
9001	KYK38	\$ 306.

▲ CP1

#### Foot Switches

Class	Type	Price
9002	AW21 ▲	\$ 663.
9002	AT4 ★	1539.

▲ CP1

★ CP9A

### Pressure Required To Operate Foot Switch For Maximum Service Torque

Class 9002	Type AW21	10 lb
Class 9002	Type AT4	20 lb

CP1	CP9A	Discount Schedule
-----	------	-------------------



**ORDERING INFORMATION**

Ordering Information Required:

1. For adjustable torque brake:
  - a. Class
  - b. Type
  - c. Torque if different from standard
2. For brake controller:
  - a. Class
  - b. Type
  - c. Information on system – cab, pendant and radio operation
3. For push button station and foot switch (if required):
  - a. Class
  - b. Type
4. For brake wheel purchased with brake:

Supply the dimensions required for ordering wheels in the Class 5010 catalog sheets.
5. For brake wheels only:

When purchased separately, the brake wheel is considered to be a replacement part. Furnish the original Square D brake wheel part number or the dimensions required for ordering wheels in the Class 5010 catalog sheets.



# Crane Control Class 5060

## Adjustable Torque Drum Brakes

### APPLICATION DATA

#### Brake Selection–Thermal Capability

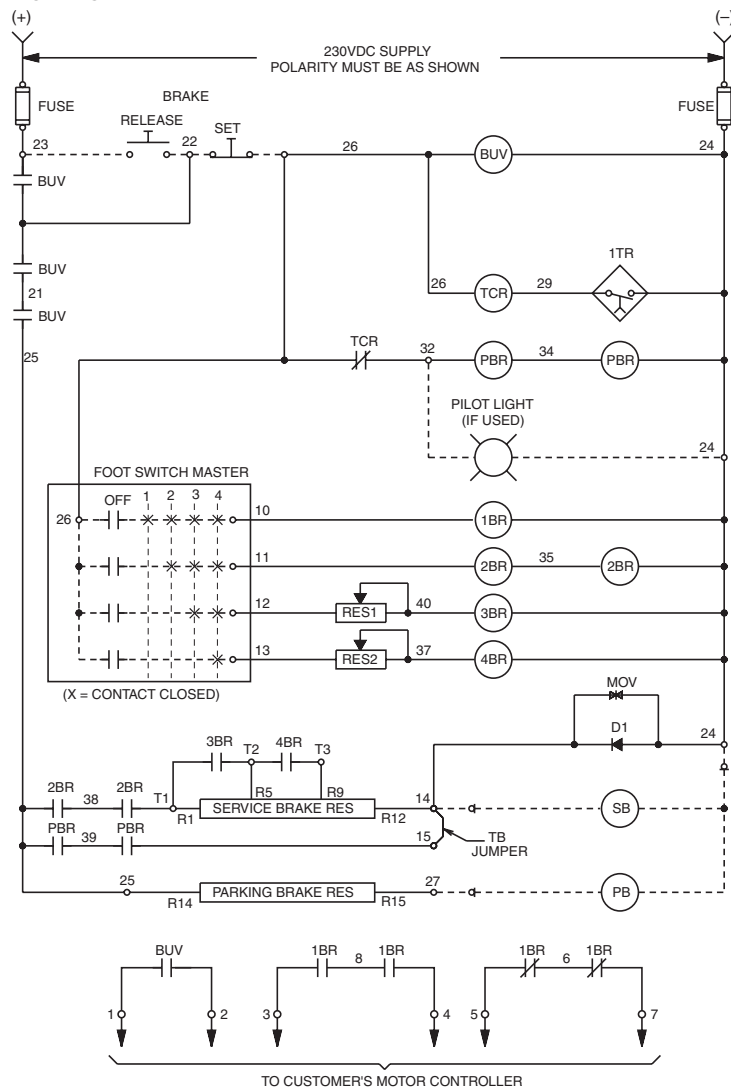
In addition to being selected to meet the torque requirements of the particular application, the brake system must be selected to prevent overheating of the brake wheel when operated on the anticipated duty cycle.

To calculate how often a stop can be made from full speed without overheating the brake wheel, see application data on page 22.

#### Torque Ratings and Wheel Data

Brake Size (Wheel Dia. in Inches)	Parking Torque (ft-lb)		Service Torque (ft-lb)			WR <sup>2</sup> of Wheel (ft-lb <sup>2</sup> )	Maximum Allowable Speed (RPM)
	Minimum	Maximum	Minimum	Maximum	Standard		
10	50	200	20	300	20-100-220	2.7	4000
13	150	550	50	850	50-290-540	10	3300
16	250	1000	100	1500	100-470-1000	30	2600

#### Elementary Wiring Diagrams for DC Controllers

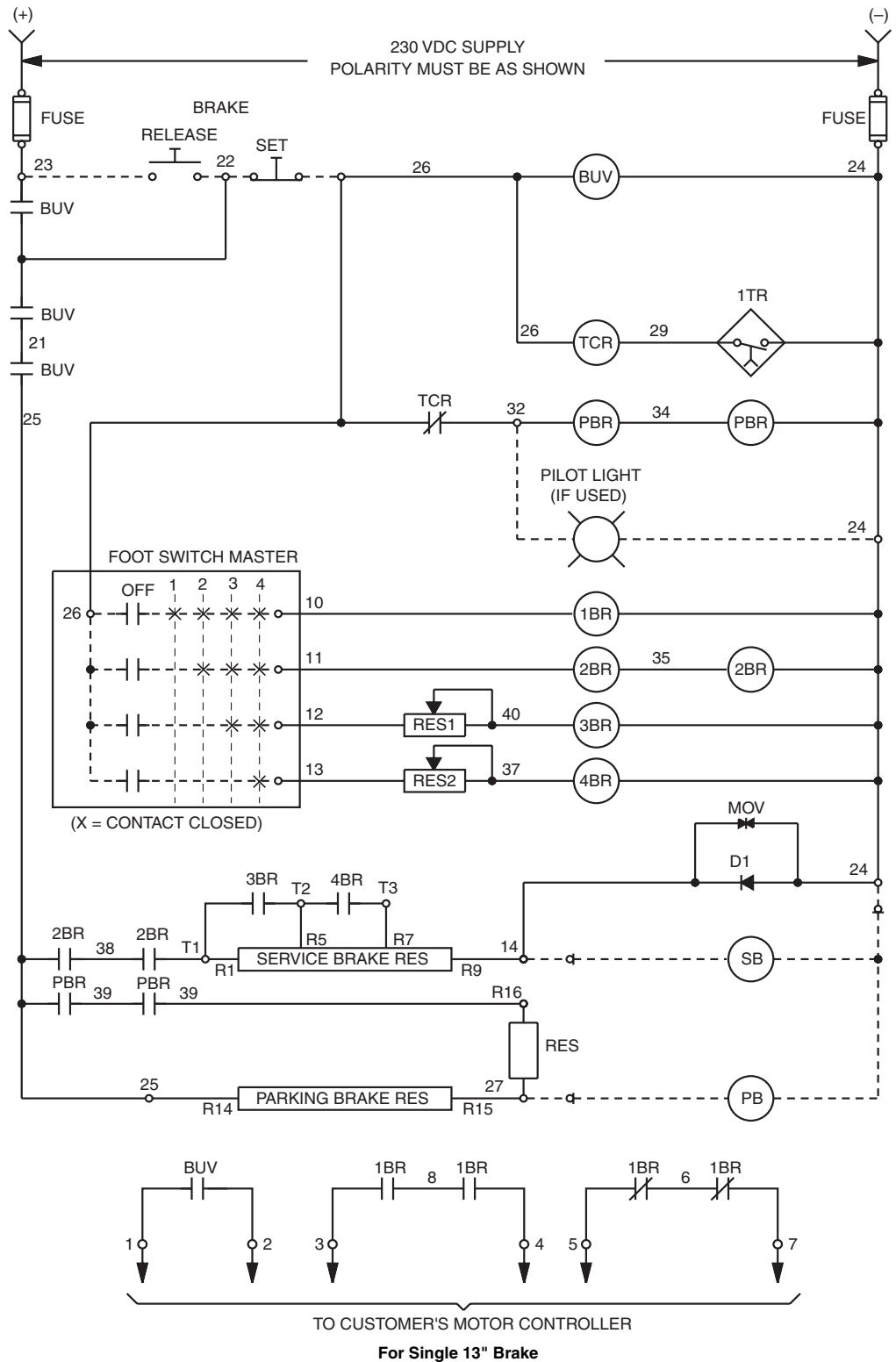


For Single 10" and 16" Brake

CRANE CONTROL CLASS 5060



**ELEMENTARY WIRING DIAGRAMS FOR DC CONTROLLERS**



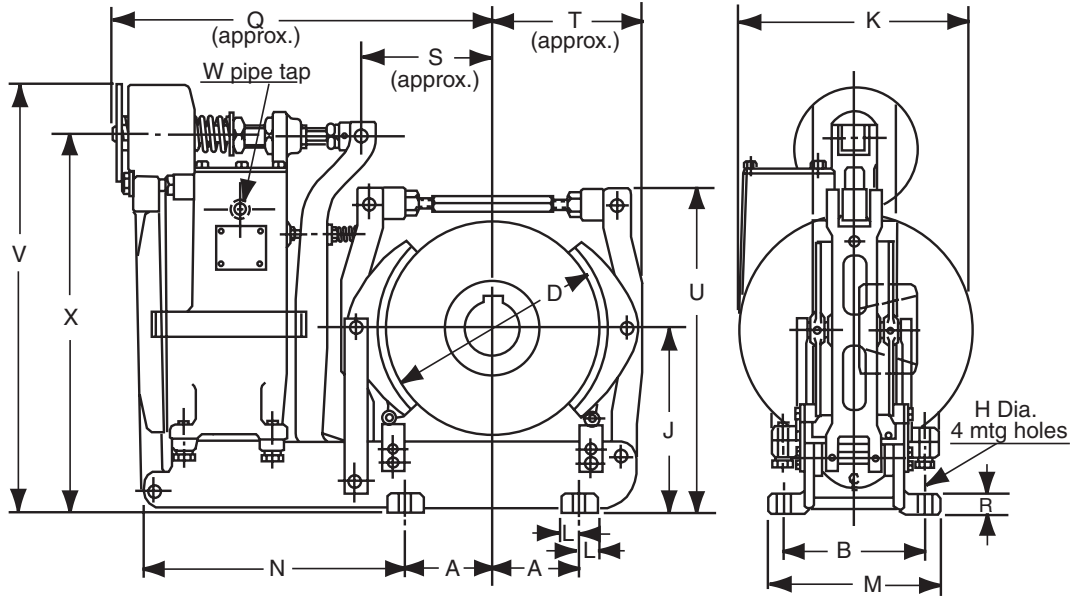
**CRANE CONTROL  
CLASS 5060**



# Crane Control Class 5060 Adjustable Torque Drum Brakes

## APPROXIMATE DIMENSIONS AND WEIGHTS

### 10" and 16" Adjustable Torque Brake



Dual Dimensions  $\frac{\text{inches}}{\text{mm}}$

Brake Size (Wheel dia. in inches)	A	B	D	H	J	K	L	M	N	Q	R	S	T	U	V	W	X	Weight lbs (kg)	
	Wheel Only	Brake Only																	
10	4 102	6.25 159	10 250	0.69 17	8.38 213	10.75 273	0.88 22	8 203	12.19 310	17.88 454	0.75 19	6 152	7.06 179	14.63 372	19.94 506	0.75 19	17.19 437	25 (11.3)	250 (112.5)
16	7.5 191	10.75 273	16 406	1.06 27	12.13 308	15.25 387	1.13 29	13 330	19.13 486	25.38 645	1.25 32	11.25 286	12.25 311	22.38 568	27.13 689	1 25	23.38 594	110 (49.5)	640 (288.0)

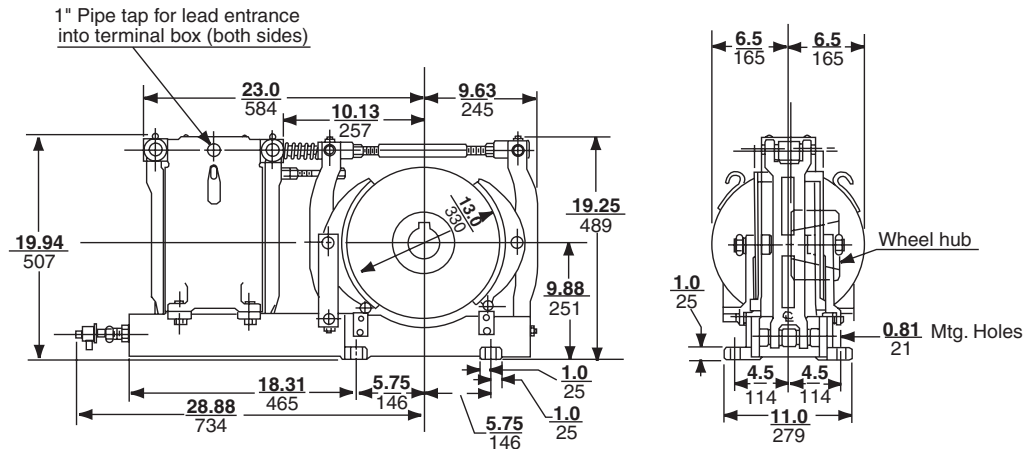
CRANE CONTROL CLASS 5060



# Crane Control Class 5060 Adjustable Torque Drum Brakes

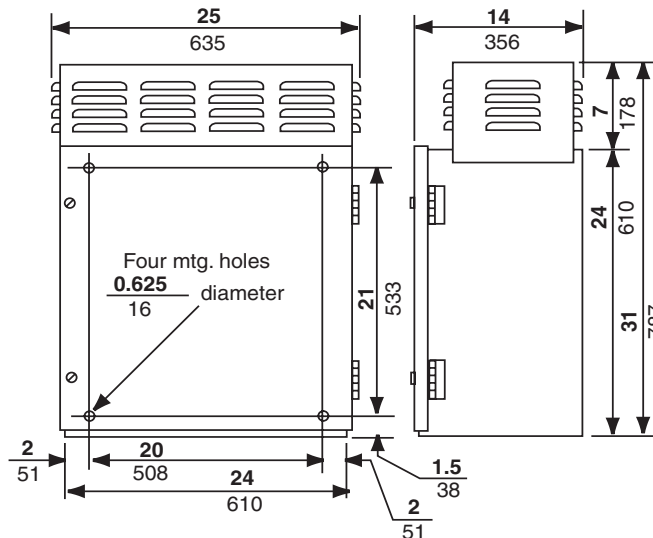
## APPROXIMATE DIMENSIONS AND WEIGHTS

### 13" Adjustable Torque Brake



Weight of wheel only – 60 lb (27 kg)  
Weight of brake only – 570 lb (259 kg)

### Adjustable Torque Brake Control Panel Simplex and Duplex •



Weight – 430 lb (196 kg)

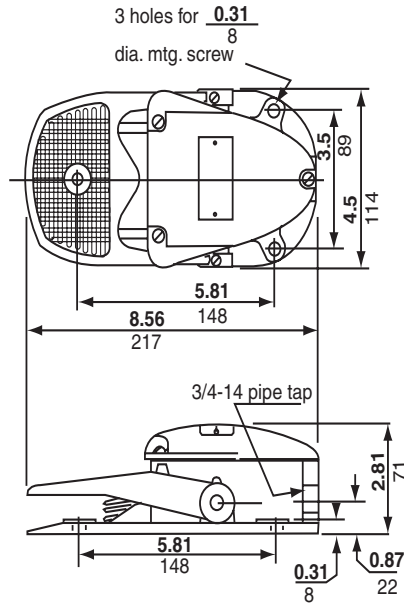
• Consult factory for quadruplex controller dimensions

Dual Dimensions  $\frac{\text{inches}}{\text{mm}}$

**Crane Control Class 5060**  
**Adjustable Torque Drum Brakes**

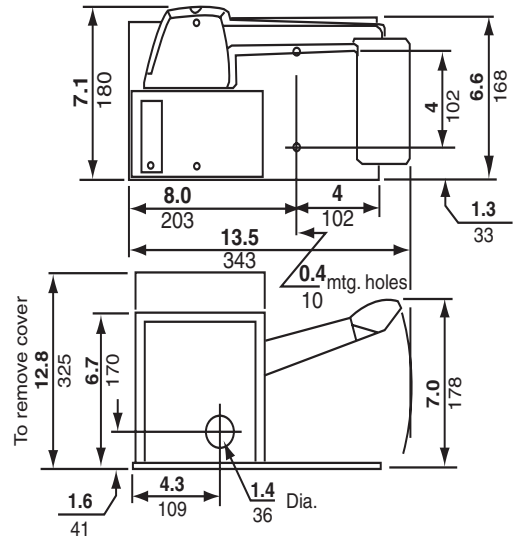
**APPROXIMATE DIMENSIONS AND WEIGHTS**

AW21 Foot Switch



Weight – 5 lb (2 kg)

AT4 Foot Switch



Weight – 18 lb (8 kg)

Dual Dimensions  $\frac{\text{inches}}{\text{mm}}$

