



For replacement parts information or an application guide, visit our website at [www.hubbell-icd.com](http://www.hubbell-icd.com) or contact your local Hubbell sales office.

## Replacement Parts

58-GA14

November 2003

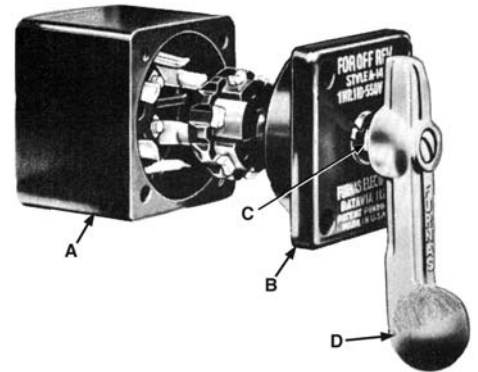
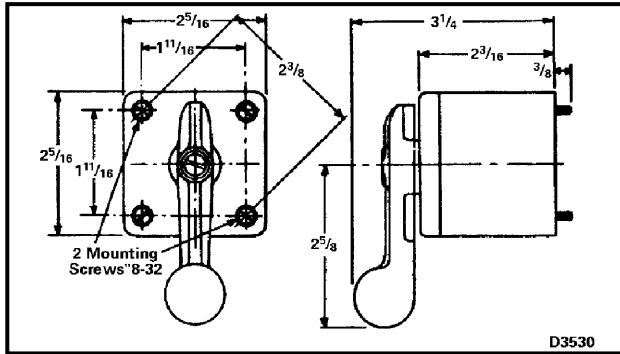
Reversing OFF ON  
Two Speed Special Purpose  
Class 58  
A14, A15

**IMPORTANT**  
THESE INSTRUCTIONS DO NOT PURPORT TO COVER ALL DETAILS OR VARIATIONS IN EQUIPMENT, NOR TO PROVIDE FOR EVERY POSSIBLE CONTINGENCY TO BE MET IN CONNECTION WITH INSTALLATION, OPERATION OR MAINTENANCE. SHOULD FURTHER INFORMATION BE DESIRED OR SHOULD PARTICULAR PROBLEMS ARISE WHICH ARE NOT COVERED SUFFICIENTLY FOR THE PURCHASER'S PURPOSES, THE MATTER SHOULD BE REFERRED TO THE LOCAL HUBBELL SALES OFFICE.

**WARNING**

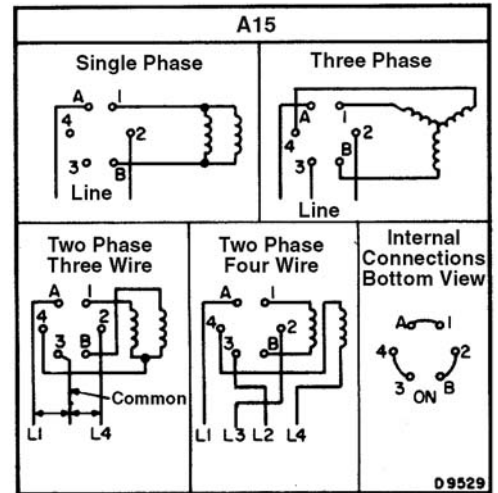
**Hazardous voltage.  
Can cause death or serious injury.**

Disconnect main power and control voltages before installation or maintenance on this equipment.



A14 (Interchanging Leads To 2 And 4 Reverses Motor Rotation)			
Direct Current 1/4 HP 115-230V	AC Single and Three Phase 1 HP 110-550V		
<p><b>D.C. Shunt</b></p>	<p><b>Condenser Motor 4 Leads</b></p>	<p><b>Three Phase</b></p>	<p><b>Repulsion Induction Motor, 4 Leads, Series Winding Reversing Type Only</b></p>
<p><b>D.C. Series</b></p>	<p><b>Condenser Motor 6 Leads 120V</b></p>	<p><b>Split Phase</b></p>	<p><b>Repulsion-Induction Three Motor Leads</b></p>
<p><b>D.C. Compound</b></p>	<p><b>Condenser Motor 6 Leads 240V</b></p>	<p><b>OFF - ON DPST</b></p>	<p><b>Internal Connections Bottom View</b></p>

D3562



Item	Part Name	Part number
A	Molded Base Assembly Complete with (6) Fingers (Qty. 1)	D09593001
B	Top (A14) (Qty. 1) Top (A15) (Qty. 1)	D03519001 D30519002
C	Spindle (Qty. 1)	D27655001
D	Radial Handle (Standard) (Qty. 1) Safety Handle (Optional, not shown) (Qty. 1)	D55711001 D10018001

**NOTE:** When ordering replacement parts, give catalog number of control and part name and number.

(For Engineering Reference Only - Rev. C)