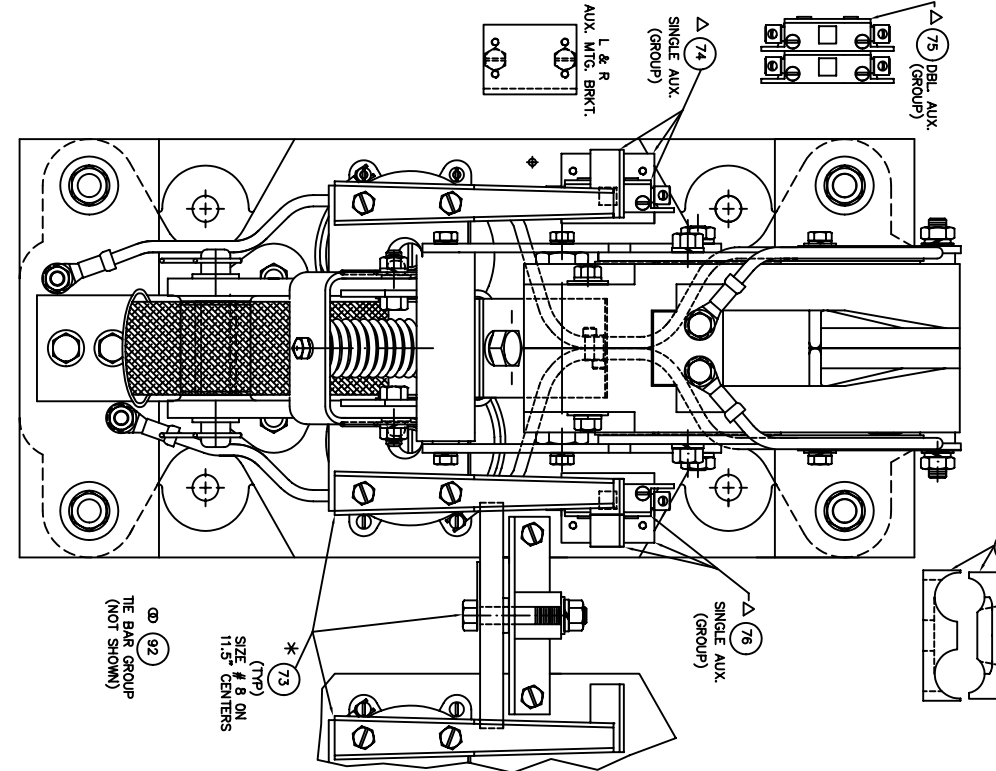


NOTE: WHEN ORDERING REPAIR PARTS BE SURE TO FURNISH SERIAL NUMBER & TYPE NUMBER WHICH ARE LOCATED ON THE NAMEPLATE. ALSO PART NAME AND PART NUMBER.

ITEM	DESCRIPTION	QTY	PART NO.
1	CONTACT TIP	2	SEE CHART
2	SHUNT ASSEMBLY	1	59805-811
3	TERMINAL BUSS	1	59590-802
4	ARMATURE SUPPORT ASSEMBLY	1	59609-001
5	ARMATURE ASSEMBLY	1	59608-620
6	ARMATURE HINGE PIN	1	59649-002
7	CONTACT REST YOKE	1	59607-000
8	SPRING	1	67981-009
9	SPRING RETAINER YOKE	1	59606-000
10	HOLDER ARM HINGE PIN	1	59648-011
11	500-13 X 1.25 LG. S.S. HEX HEAD SCREW	2	47779-109
12	500-13 X 1.00 LG. HEX HEAD SCREW	2	47252-242
13	3/75 S.S. FLAT WASHER	2	47226-103
14	3/75 S.S. FLAT WASHER	2	47250-295
15	3/75 S.S. FLAT WASHER	2	47252-040
16	3/75 S.S. FLAT WASHER	2	47253-603
17	3/75 S.S. FLAT WASHER	2	47253-021
18	3/75 S.S. FLAT WASHER	2	47250-502
19	3/75-16 X 1.00 LG. S.S. HEX HEAD SCREW	2	47262-018
20	3/12-18 X 1.75 LG. HEX HEAD SCREW	2	47261-041
21	3/12-18 X 1.75 LG. HEX HEAD SCREW	2	47262-018
22	3/12-18 X 1.75 LG. HEX HEAD SCREW	2	47262-018
23	3/12-18 X 1.75 LG. HEX HEAD SCREW	2	47262-018
24	3/12-18 X 1.75 LG. HEX HEAD SCREW	2	47262-018
25	3/12-18 X 1.75 LG. HEX HEAD SCREW	2	47262-018
26	3/12-18 X 1.75 LG. HEX HEAD SCREW	2	47262-018
27	3/12-18 X 1.75 LG. HEX HEAD SCREW	2	47262-018
28	3/12-18 X 1.75 LG. HEX HEAD SCREW	2	47262-018
29	3/12-18 X 1.75 LG. HEX HEAD SCREW	2	47262-018
30	3/12-18 X 1.75 LG. HEX HEAD SCREW	2	47262-018
31	3/12-18 X 1.75 LG. HEX HEAD SCREW	2	47262-018
32	3/12-18 X 1.75 LG. HEX HEAD SCREW	2	47262-018
33	3/12-18 X 1.75 LG. HEX HEAD SCREW	2	47262-018
34	3/12-18 X 1.75 LG. HEX HEAD SCREW	2	47262-018
35	3/12-18 X 1.75 LG. HEX HEAD SCREW	2	47262-018
36	3/12-18 X 1.75 LG. HEX HEAD SCREW	2	47262-018
37	3/12-18 X 1.75 LG. HEX HEAD SCREW	2	47262-018
38	3/12-18 X 1.75 LG. HEX HEAD SCREW	2	47262-018
39	3/12-18 X 1.75 LG. HEX HEAD SCREW	2	47262-018
40	3/12-18 X 1.75 LG. HEX HEAD SCREW	2	47262-018
41	3/12-18 X 1.75 LG. HEX HEAD SCREW	2	47262-018
42	3/12-18 X 1.75 LG. HEX HEAD SCREW	2	47262-018
43	3/12-18 X 1.75 LG. HEX HEAD SCREW	2	47262-018
44	3/12-18 X 1.75 LG. HEX HEAD SCREW	2	47262-018
45	3/12-18 X 1.75 LG. HEX HEAD SCREW	2	47262-018
46	3/12-18 X 1.75 LG. HEX HEAD SCREW	2	47262-018
47	3/12-18 X 1.75 LG. HEX HEAD SCREW	2	47262-018
48	3/12-18 X 1.75 LG. HEX HEAD SCREW	2	47262-018
49	3/12-18 X 1.75 LG. HEX HEAD SCREW	2	47262-018
50	3/12-18 X 1.75 LG. HEX HEAD SCREW	2	47262-018
51	3/12-18 X 1.75 LG. HEX HEAD SCREW	2	47262-018
52	3/12-18 X 1.75 LG. HEX HEAD SCREW	2	47262-018
53	3/12-18 X 1.75 LG. HEX HEAD SCREW	2	47262-018
54	3/12-18 X 1.75 LG. HEX HEAD SCREW	2	47262-018
55	3/12-18 X 1.75 LG. HEX HEAD SCREW	2	47262-018

56	250 S.S. LOCK WASHER	2	47252-238
57	3/12-18 S.S. HEX NUT	1	47796-103
58	BRACKET	2	59590-000
59	LINK	2	59579-000
60	SPACER-TOP	2	59578-000
61	SPACER-BOTTOM	2	59577-000
62	3/12-18 X 3/75 LG. BRASS STUD	2	57438-047
63	3/12-18 X 5/25 LG. BRASS STUD	1	57438-049
64	3/12 BRASS FLAT WASHER	8	47251-012
65	3/12-18 BRASS HEX NUT	6	47254-013
66	3/12-18 X 3/75 LG. HEX HEAD SCREW	1	47246-535
67	3/12-18 HEX NUT ESNM	1	47301-013
68	500-13 X 2.75 LG. HEX HEAD SCREW	4	47246-538
69	500 LOCK WASHER	4	47250-316
70	500-13 FULL HEX NUT	4	47252-042
71	500-13 FULL HEX NUT	4	47253-505
72	MOLDED BASE ASSEMBLY	4	59576-601
73	MECHANICAL INTERLOCK ASSEMBLY	4	59625-008
74	MECHANICAL INTERLOCK ASSEMBLY (SPL)	1	59625-006
75	PLUNGER AUXILIARY (SINGLE L.H.) GROUP	1	59620-066
76	PLUNGER AUXILIARY (DOUBLE L.H.) GROUP	1	59620-106
77	PLUNGER AUXILIARY (SINGLE R.H.) GROUP	1	59620-168
78	PLUNGER AUXILIARY (DOUBLE R.H.) GROUP	1	59620-168
79	COMPLETE ARC SHIELD & ARC TRANSFER ASSEMBLY	4	59622-806
80	3/75-16 X 1.75 LG. HEX HEAD SCREW	2	47246-106
81	3/75-16 X 4.00 LG. HEX HEAD SCREW	2	47246-117
82	3/75-16 X 4.50 LG. HEX HEAD SCREW	2	47246-514
83	500-13 X 1.50 LG. S.S. HEX HEAD SCREW	2	47779-110
84	750 EXTERNAL TOOTH RETAINING RING	2	57429-026
85	875 EXTERNAL TOOTH RETAINING RING	2	57429-027
86	BASE	1	59576-003
87	SPACER (QTY. 4) OR AS REQUIRED	1	66970-040
88	ARC TRANSFER	1	59622-200
89	HAIR PIN COLLER	2	57403-005
90	HAIR PIN COLLER	2	57403-006
91	3/12 S.S. LOCK WASHER	4	47252-239
92	THE BAR GROUP SIZE 8 ONLY (NOT SHOWN)	4	59400-028
93	NYOCLP (NOT SHOWN)	4	57464-003
94	CRIMP TERMINAL	4	57513-060
95	#8 X .50 LG. PAN HEAD TYPE A8 SCREW (NOT SHOWN)	5,38	8211130008
96	LEAD WIRE #8 XL=33, R=31, 50 LG.	1	67906-020
97	3/75 FLAT WASHER	2	57513-068
98	CRIMP TERMINAL	2	57513-068
99	CONTROL WIRE #14 X 9.25 LG.	1	8211410614
100	3/12-18 X .50 LG. S.S. HEX HEAD SCREW	2	47779-077
101	ARC SHIELD SPACER	2	67988-006
102	CLAMP TERMINAL (QTY. 4) OR AS REQUIRED	2	57300-048
103			
104			
105			



COMPLETE WINDING ASSEMBLY PART NO.	DC CONTROL WINDING COILS (2)	DC OPERATING COILS (2)	PART NO.	OHMS ± 10% EACH COIL AT 20° C
59596-801	111	115 / 125V	001	300 OHMS
59596-801	112	115 / 125V	004	75 OHMS
59596-801	113	80V	005	30 OHMS
59596-801	114	36V	006	5.2 OHMS
59596-801	311	230 / 250V	007	300 OHMS
59596-801	312	115 / 125V	004	75 OHMS
59596-801	313	80V	005	30 OHMS
59596-801	314	36V	006	5.2 OHMS

DC CONTROL WINDING COILS (2)	DC OPERATING COILS (2)	PART NO.	OHMS ± 10% EACH COIL AT 20° C
111	115 / 125V	001	300 OHMS
112	115 / 125V	004	75 OHMS
113	80V	005	30 OHMS
114	36V	006	5.2 OHMS
311	230 / 250V	007	300 OHMS
312	115 / 125V	004	75 OHMS
313	80V	005	30 OHMS
314	36V	006	5.2 OHMS

NOTES: * Δ ◉ ◉ ◉ ◉ (NOT INCLUDED WITH COMPLETE CONTACTOR ASSEMBLY).
 * ITEM 73 MECHANICAL INTERLOCK ASSEMBLY PART NO. 59625-008 (ORDERED SEPARATELY).
 Δ ITEM 74,75,76,77 PLUNGER AUXILIARY GROUP (INCLUDING KNOCKER, BRACKET, AND MFG. HARDWARE) (ORDERED SEPARATELY).
 ◉ ITEM 73A SPECIAL INTERLOCK BAR ASSEMBLY. USED ONLY WHEN CONTACTORS ARE SPACED AT 11.00" CENTERS (ORDERED SEPARATELY).
 ◉ ITEM 92 THE BAR GROUP SIZE 8 ONLY (11.5" MFG. CENTERS) (NOT SHOWN) (ORDERED SEPARATELY).
 ◉ ITEM 102 CLAMP TERMINAL P/N 57300-048 250, 500 MCM (ORDERED SEPARATELY).
 ◉ ITEM 87 SPACER USED ONLY WHEN POWER CRIMP TERMINALS ARE USED. (ORDERED SEPARATELY).

REVISION	DATE	BY	DESCRIPTION
A	2-21-00	TLJ	UPDATED DRAWING
B	9-22-00	TLJ	ITEM 66 WAS 3.50 LG. ADDED ITEM 97

REPAIR PARTS BULLETIN 5210
MOLDED BASE FRONT REMOVABLE
1350 AMP, 1 POLE, N.O.,
DC CONTACTOR, SIZE 8

DATE: 08/13/98 DRG. NO. **RPC-59800-3**
 2 OF 2