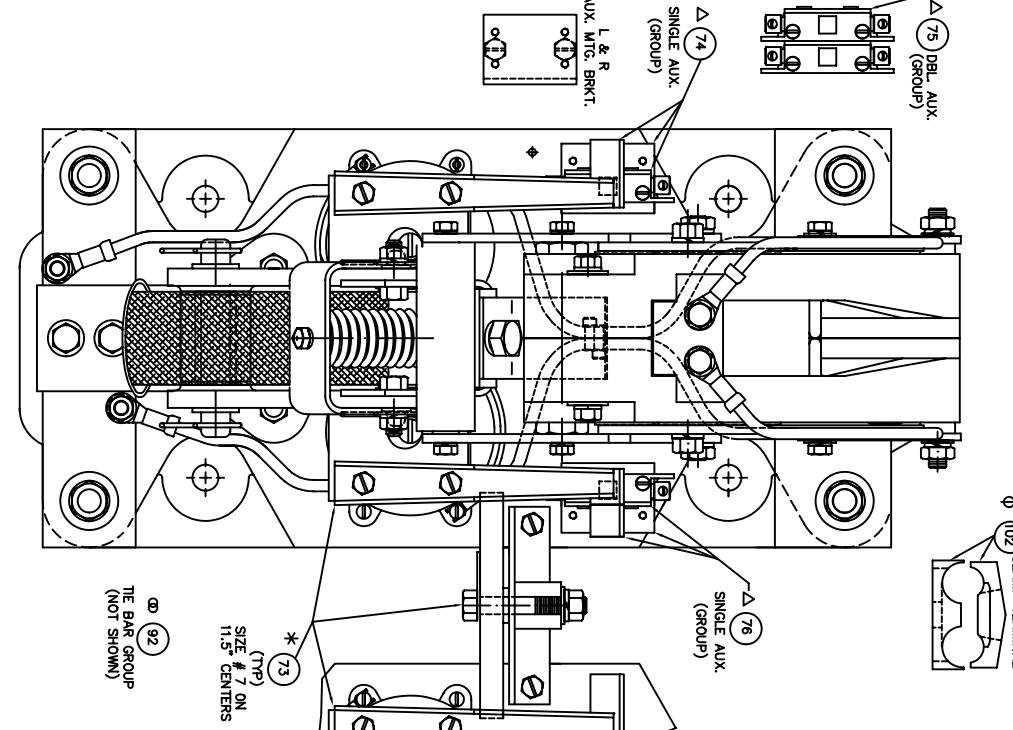


ITEM	DESCRIPTION	QTY	PART NO.
1	CONTACT TIP	2	SEE CHART
2	SHUNT ASSEMBLY	1	59605-711
3	TERMINAL BUSS	1	59590-702
4	ARMATURE SUPPORT ASSEMBLY	1	59609-001
5	ARMATURE ASSEMBLY	1	59608-620
6	ARMATURE HINGE PIN	1	59649-002
7	CONTACT REST YOKE	1	59607-000
8	SPRING	1	67981-009
9	SPRING RETAINER YOKE	1	59606-000
10	HOLDER ARM HINGE PIN	1	59648-011
11	500-13 X 1.25 LG. S.S. HEX HEAD SCREW	2	47252-242
12	500-13 X 1.00 LG. HEX HEAD SCREW	2	47246-103
13	375 S.S. FLAT WASHER	2	47250-295
14	375 S.S. FLAT WASHER	2	47252-040
15	375 S.S. FLAT WASHER	2	47252-040
16	375 S.S. FLAT WASHER	2	47253-603
17	375 S.S. FLAT WASHER	2	47253-603
18	375 S.S. FLAT WASHER	2	47253-603
19	375-16 X 1.00 LG. S.S. HEX HEAD SCREW	2	47252-039
20	375-16 X 1.00 LG. S.S. HEX HEAD SCREW	2	47253-602
21	375-16 X 1.00 LG. S.S. HEX HEAD SCREW	2	47253-602
22	375-16 X 1.00 LG. S.S. HEX HEAD SCREW	2	47253-602
23	375-16 X 1.00 LG. S.S. HEX HEAD SCREW	2	47253-602
24	375-16 X 1.00 LG. S.S. HEX HEAD SCREW	2	47253-602
25	375-16 X 1.00 LG. S.S. HEX HEAD SCREW	2	47253-602
26	375-16 X 1.00 LG. S.S. HEX HEAD SCREW	2	47253-602
27	375-16 X 1.00 LG. S.S. HEX HEAD SCREW	2	47253-602
28	375-16 X 1.00 LG. S.S. HEX HEAD SCREW	2	47253-602
29	375-16 X 1.00 LG. S.S. HEX HEAD SCREW	2	47253-602
30	375-16 X 1.00 LG. S.S. HEX HEAD SCREW	2	47253-602
31	375-16 X 1.00 LG. S.S. HEX HEAD SCREW	2	47253-602
32	375-16 X 1.00 LG. S.S. HEX HEAD SCREW	2	47253-602
33	375-16 X 1.00 LG. S.S. HEX HEAD SCREW	2	47253-602
34	375-16 X 1.00 LG. S.S. HEX HEAD SCREW	2	47253-602
35	375-16 X 1.00 LG. S.S. HEX HEAD SCREW	2	47253-602
36	375-16 X 1.00 LG. S.S. HEX HEAD SCREW	2	47253-602
37	375-16 X 1.00 LG. S.S. HEX HEAD SCREW	2	47253-602
38	375-16 X 1.00 LG. S.S. HEX HEAD SCREW	2	47253-602
39	375-16 X 1.00 LG. S.S. HEX HEAD SCREW	2	47253-602
40	375-16 X 1.00 LG. S.S. HEX HEAD SCREW	2	47253-602
41	375-16 X 1.00 LG. S.S. HEX HEAD SCREW	2	47253-602
42	375-16 X 1.00 LG. S.S. HEX HEAD SCREW	2	47253-602
43	375-16 X 1.00 LG. S.S. HEX HEAD SCREW	2	47253-602
44	375-16 X 1.00 LG. S.S. HEX HEAD SCREW	2	47253-602
45	375-16 X 1.00 LG. S.S. HEX HEAD SCREW	2	47253-602
46	375-16 X 1.00 LG. S.S. HEX HEAD SCREW	2	47253-602
47	375-16 X 1.00 LG. S.S. HEX HEAD SCREW	2	47253-602
48	375-16 X 1.00 LG. S.S. HEX HEAD SCREW	2	47253-602
49	375-16 X 1.00 LG. S.S. HEX HEAD SCREW	2	47253-602
50	375-16 X 1.00 LG. S.S. HEX HEAD SCREW	2	47253-602
51	375-16 X 1.00 LG. S.S. HEX HEAD SCREW	2	47253-602
52	375-16 X 1.00 LG. S.S. HEX HEAD SCREW	2	47253-602
53	375-16 X 1.00 LG. S.S. HEX HEAD SCREW	2	47253-602
54	375-16 X 1.00 LG. S.S. HEX HEAD SCREW	2	47253-602
55	375-16 X 1.00 LG. S.S. HEX HEAD SCREW	2	47253-602

56	250 S.S. LOCK WASHER	2	47252-238
57	375-18 S.S. HEX NUT	2	47796-103
58	BRACKET	2	59590-000
59	LINK	2	59579-000
60	SPACER-TOP	2	59578-000
61	SPACER-BOTTOM	2	59577-000
62	375-18 X 3.75 LG. BRASS STUD	2	57438-047
63	375-18 X 5.25 LG. BRASS STUD	1	57438-049
64	375 BRASS FLAT WASHER	8	47251-012
65	375-18 BRASS HEX NUT	6	47254-013
66	375-18 X 3.75 LG. HEX HEAD SCREW	1	47246-535
67	375-18 X 3.75 LG. HEX HEAD SCREW	1	47301-013
68	500-13 X 2.75 LG. HEX HEAD SCREW	4	47246-538
69	500 LOCK WASHER	4	47250-516
70	500-13 FULL HEX NUT	4	47252-042
71	500-13 FULL HEX NUT	4	47253-505
72	MOLDED BASE ASSEMBLY	1	59576-601
73	MECHANICAL INTERLOCK ASSEMBLY	1	59625-008
74	MECHANICAL INTERLOCK ASSEMBLY (SPL)	1	59625-006
75	PLUNGER AUXILIARY (SINGLE L.H.) GROUP	1	59620-066
76	PLUNGER AUXILIARY (DOUBLE L.H.) GROUP	1	59620-106
77	PLUNGER AUXILIARY (SINGLE R.H.) GROUP	1	59620-168
78	PLUNGER AUXILIARY (DOUBLE R.H.) GROUP	1	59620-168
79	COMPLETE ARC SHIELD & ARC TRANSFER ASSEMBLY	4	59622-806
80	375-18 X 1.75 LG. HEX HEAD SCREW	2	47246-082
81	375-16 X 1.75 LG. HEX HEAD SCREW	2	47246-117
82	375-16 X 4.00 LG. HEX HEAD SCREW	2	47246-514
83	500-13 X 1.50 LG. S.S. HEX HEAD SCREW	2	47246-514
84	750 EXTERNAL TOOTH RETAINING RING	2	47246-514
85	875 EXTERNAL TOOTH RETAINING RING	2	57429-027
86	BASE	1	59576-003
87	SPACER (QTY. 4) OR AS REQUIRED	1	69576-040
88	ARC TRANSFER	1	59622-200
89	HAIR PIN CUTTER	2	57403-005
90	HAIR PIN CUTTER	2	57403-006
91	375 S.S. LOCK WASHER	4	47252-039
92	THE BAR GROUP SIZE 7 ONLY (NOT SHOWN)	4	59400-027
93	NYCOLIP (NOT SHOWN)	4	57464-003
94	CRIMP TERMINAL	4	57513-060
95	#8 X .50 LG. PAN HEAD TYPE AB SCREW (NOT SHOWN)	5,38	8211130008
96	LEAD WIRE #8 X L=53, R=31.50 LG.	2	57513-068
97	375 FLAT WASHER	2	57513-068
98	CRIMP TERMINAL	2	57513-068
99	CONTROL WIRE #14 X 9.25 LG.	1,77	8211410614
100	375-18 X .50 LG. S.S. HEX HEAD SCREW	2	47778-077
101	ARC SHIELD SPACER	2	67888-006
102	CLAMP TERMINAL (QTY. 4) OR AS REQUIRED	2	57300-048
103			
104			
105			



ITEM	DESCRIPTION	QTY	PART NO.
1	CONTACT TIP	2	SEE CHART
2	SHUNT ASSEMBLY	1	59605-711
3	TERMINAL BUSS	1	59590-702
4	ARMATURE SUPPORT ASSEMBLY	1	59609-001
5	ARMATURE ASSEMBLY	1	59608-620
6	ARMATURE HINGE PIN	1	59649-002
7	CONTACT REST YOKE	1	59607-000
8	SPRING	1	67981-009
9	SPRING RETAINER YOKE	1	59606-000
10	HOLDER ARM HINGE PIN	1	59648-011
11	500-13 X 1.25 LG. S.S. HEX HEAD SCREW	2	47252-242
12	500-13 X 1.00 LG. HEX HEAD SCREW	2	47246-103
13	375 S.S. FLAT WASHER	2	47250-295
14	375 S.S. FLAT WASHER	2	47252-040
15	375 S.S. FLAT WASHER	2	47252-040
16	375 S.S. FLAT WASHER	2	47253-603
17	375 S.S. FLAT WASHER	2	47253-603
18	375 S.S. FLAT WASHER	2	47253-603
19	375-16 X 1.00 LG. S.S. HEX HEAD SCREW	2	47252-039
20	375-16 X 1.00 LG. S.S. HEX HEAD SCREW	2	47253-602
21	375-16 X 1.00 LG. S.S. HEX HEAD SCREW	2	47253-602
22	375-16 X 1.00 LG. S.S. HEX HEAD SCREW	2	47253-602
23	375-16 X 1.00 LG. S.S. HEX HEAD SCREW	2	47253-602
24	375-16 X 1.00 LG. S.S. HEX HEAD SCREW	2	47253-602
25	375-16 X 1.00 LG. S.S. HEX HEAD SCREW	2	47253-602
26	375-16 X 1.00 LG. S.S. HEX HEAD SCREW	2	47253-602
27	375-16 X 1.00 LG. S.S. HEX HEAD SCREW	2	47253-602
28	375-16 X 1.00 LG. S.S. HEX HEAD SCREW	2	47253-602
29	375-16 X 1.00 LG. S.S. HEX HEAD SCREW	2	47253-602
30	375-16 X 1.00 LG. S.S. HEX HEAD SCREW	2	47253-602
31	375-16 X 1.00 LG. S.S. HEX HEAD SCREW	2	47253-602
32	375-16 X 1.00 LG. S.S. HEX HEAD SCREW	2	47253-602
33	375-16 X 1.00 LG. S.S. HEX HEAD SCREW	2	47253-602
34	375-16 X 1.00 LG. S.S. HEX HEAD SCREW	2	47253-602
35	375-16 X 1.00 LG. S.S. HEX HEAD SCREW	2	47253-602
36	375-16 X 1.00 LG. S.S. HEX HEAD SCREW	2	47253-602
37	375-16 X 1.00 LG. S.S. HEX HEAD SCREW	2	47253-602
38	375-16 X 1.00 LG. S.S. HEX HEAD SCREW	2	47253-602
39	375-16 X 1.00 LG. S.S. HEX HEAD SCREW	2	47253-602
40	375-16 X 1.00 LG. S.S. HEX HEAD SCREW	2	47253-602
41	375-16 X 1.00 LG. S.S. HEX HEAD SCREW	2	47253-602
42	375-16 X 1.00 LG. S.S. HEX HEAD SCREW	2	47253-602
43	375-16 X 1.00 LG. S.S. HEX HEAD SCREW	2	47253-602
44	375-16 X 1.00 LG. S.S. HEX HEAD SCREW	2	47253-602
45	375-16 X 1.00 LG. S.S. HEX HEAD SCREW	2	47253-602
46	375-16 X 1.00 LG. S.S. HEX HEAD SCREW	2	47253-602
47	375-16 X 1.00 LG. S.S. HEX HEAD SCREW	2	47253-602
48	375-16 X 1.00 LG. S.S. HEX HEAD SCREW	2	47253-602
49	375-16 X 1.00 LG. S.S. HEX HEAD SCREW	2	47253-602
50	375-16 X 1.00 LG. S.S. HEX HEAD SCREW	2	47253-602
51	375-16 X 1.00 LG. S.S. HEX HEAD SCREW	2	47253-602
52	375-16 X 1.00 LG. S.S. HEX HEAD SCREW	2	47253-602
53	375-16 X 1.00 LG. S.S. HEX HEAD SCREW	2	47253-602
54	375-16 X 1.00 LG. S.S. HEX HEAD SCREW	2	47253-602
55	375-16 X 1.00 LG. S.S. HEX HEAD SCREW	2	47253-602

ITEM	DESCRIPTION	QTY	PART NO.
56	250 S.S. LOCK WASHER	2	47252-238
57	375-18 S.S. HEX NUT	2	47796-103
58	BRACKET	2	59590-000
59	LINK	2	59579-000
60	SPACER-TOP	2	59578-000
61	SPACER-BOTTOM	2	59577-000
62	375-18 X 3.75 LG. BRASS STUD	2	57438-047
63	375-18 X 5.25 LG. BRASS STUD	1	57438-049
64	375 BRASS FLAT WASHER	8	47251-012
65	375-18 BRASS HEX NUT	6	47254-013
66	375-18 X 3.75 LG. HEX HEAD SCREW	1	47246-535
67	375-18 X 3.75 LG. HEX HEAD SCREW	1	47301-013
68	500-13 X 2.75 LG. HEX HEAD SCREW	4	47246-538
69	500 LOCK WASHER	4	47250-516
70	500-13 FULL HEX NUT	4	47252-042
71	500-13 FULL HEX NUT	4	47253-505
72	MOLDED BASE ASSEMBLY	1	59576-601
73	MECHANICAL INTERLOCK ASSEMBLY	1	59625-008
74	MECHANICAL INTERLOCK ASSEMBLY (SPL)	1	59625-006
75	PLUNGER AUXILIARY (SINGLE L.H.) GROUP	1	59620-066
76	PLUNGER AUXILIARY (DOUBLE L.H.) GROUP	1	59620-106
77	PLUNGER AUXILIARY (SINGLE R.H.) GROUP	1	59620-168
78	PLUNGER AUXILIARY (DOUBLE R.H.) GROUP	1	59620-168
79	COMPLETE ARC SHIELD & ARC TRANSFER ASSEMBLY	4	59622-806
80	375-18 X 1.75 LG. HEX HEAD SCREW	2	47246-082
81	375-16 X 1.75 LG. HEX HEAD SCREW	2	47246-117
82	375-16 X 4.00 LG. HEX HEAD SCREW	2	47246-514
83	500-13 X 1.50 LG. S.S. HEX HEAD SCREW	2	47246-514
84	750 EXTERNAL TOOTH RETAINING RING	2	47246-514
85	875 EXTERNAL TOOTH RETAINING RING	2	57429-027
86	BASE	1	59576-003
87	SPACER (QTY. 4) OR AS REQUIRED	1	69576-040
88	ARC TRANSFER	1	59622-200
89	HAIR PIN CUTTER	2	57403-005
90	HAIR PIN CUTTER	2	57403-006
91	375 S.S. LOCK WASHER	4	47252-039
92	THE BAR GROUP SIZE 7 ONLY (NOT SHOWN)	4	59400-027
93	NYCOLIP (NOT SHOWN)	4	57464-003
94	CRIMP TERMINAL	4	57513-060
95	#8 X .50 LG. PAN HEAD TYPE AB SCREW (NOT SHOWN)	5,38	8211130008
96	LEAD WIRE #8 X L=53, R=31.50 LG.	2	57513-068
97	375 FLAT WASHER	2	57513-068
98	CRIMP TERMINAL	2	57513-068
99	CONTROL WIRE #14 X 9.25 LG.	1,77	8211410614
100	375-18 X .50 LG. S.S. HEX HEAD SCREW	2	47778-077
101	ARC SHIELD SPACER	2	67888-006
102	CLAMP TERMINAL (QTY. 4) OR AS REQUIRED	2	57300-048
103			
104			
105			

ITEM	DESCRIPTION	QTY	PART NO.
1	CONTACT TIP	2	SEE CHART
2	SHUNT ASSEMBLY	1	59605-711
3	TERMINAL BUSS	1	59590-702
4	ARMATURE SUPPORT ASSEMBLY	1	59609-001
5	ARMATURE ASSEMBLY	1	59608-620
6	ARMATURE HINGE PIN	1	59649-002
7	CONTACT REST YOKE	1	59607-000
8	SPRING	1	67981-009
9	SPRING RETAINER YOKE	1	59606-000
10	HOLDER ARM HINGE PIN	1	59648-011
11	500-13 X 1.25 LG. S.S. HEX HEAD SCREW	2	47252-242
12	500-13 X 1.00 LG. HEX HEAD SCREW	2	47246-103
13	375 S.S. FLAT WASHER	2	47250-295
14	375 S.S. FLAT WASHER	2	47252-040
15	375 S.S. FLAT WASHER	2	47252-040
16	375 S.S. FLAT WASHER	2	47253-603
17	375 S.S. FLAT WASHER	2	47253-603
18	375 S.S. FLAT WAS		