

BULLETIN 5110 AC POWER, DC OPERATED
BULLETIN 5210 DC POWER, DC OPERATED

NOTE: WHEN ORDERING PARTS, FURNISH THE FOLLOWING INFORMATION
1. BULLETIN NUMBER, NEMA SIZE, & SERIAL NUMBER
2. PART NUMBER & DESCRIPTION

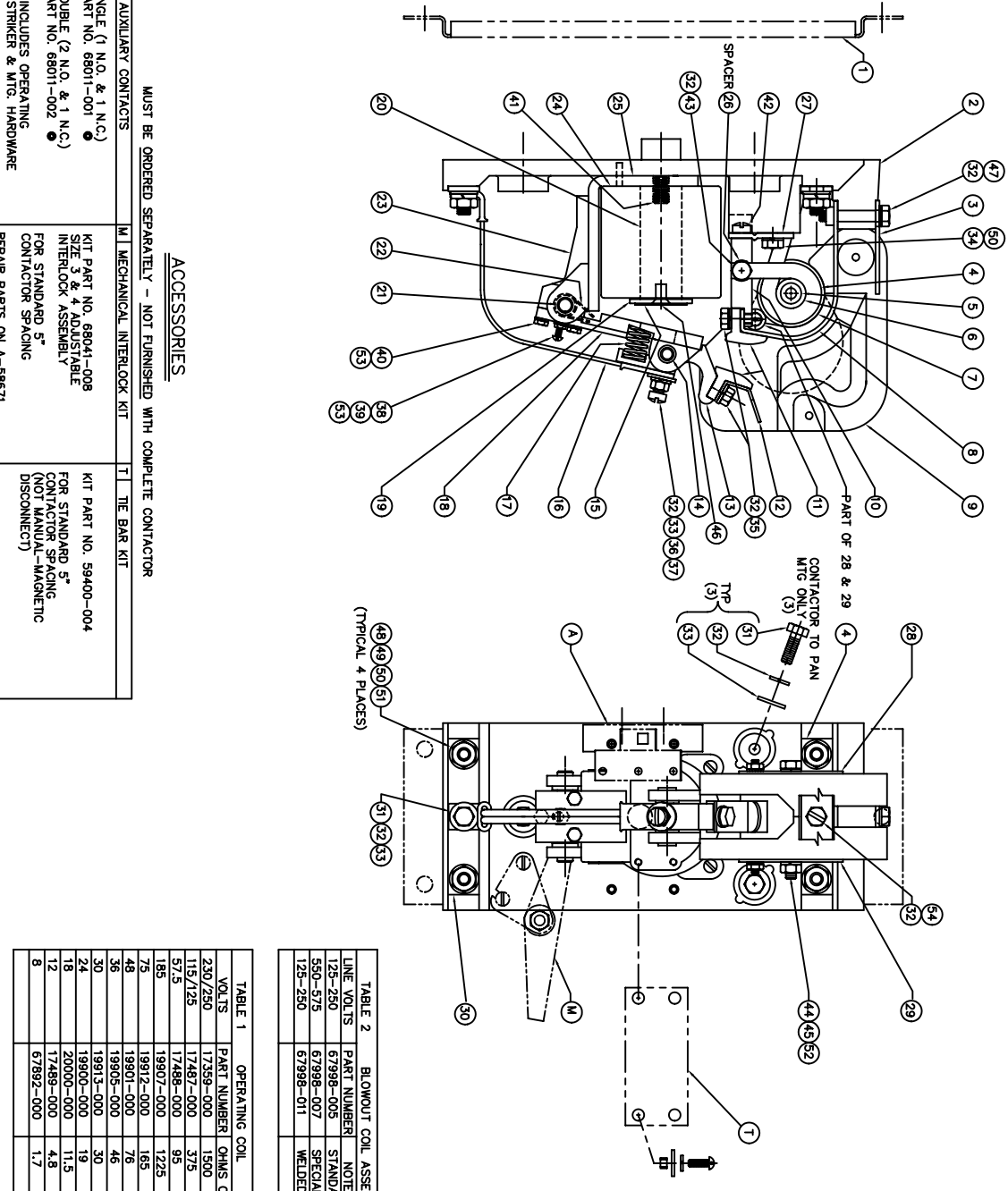


TABLE 1 OPERATING COIL

VOLTS	PART NUMBER	OHMS	COLD
230/250	17359-000	1500	
115/125	17487-000	375	
57.5	17488-000	95	
185	19907-000	1225	
75	19912-000	165	
48	19901-000	76	
36	19905-000	46	
30	19913-000	39	
24	19900-000	11.5	
18	20000-000	4.8	
12	17489-000	4.8	
8	67892-000	1.7	

TABLE 2 BLOWOUT COIL ASSEMBLY

LINE VOLTS	PART NUMBER	NOTES
125-250	67998-005	STANDARD
550-575	67998-007	SPECIAL
125-250	67996-011	WELDED (2)

ITEM	DESCRIPTION	NOTES	QTY PER HOLE	PART NO
1	MOUNTING PAN	(1)	1	68005-001
2	BASE		1	67995-002
3	ARC SHIELD RETAINER		1	59653-100
4	BLOWOUT COIL ASSEMBLY	(2)	1	SEE TABLE 2
5	DC BLOWOUT CORE (SOLID)	(3)	1	68570-033
6	AC BLOWOUT CORE (SLOTTED)	(5)	1	17348-000
7	BLOWOUT INSULATING TUBE		1	16962-000
8	BLOWOUT GUARD		2	16961-000
9	ARC SHIELD ASSEMBLY		1	68054-001
10	STATIONARY CONTACT SUPPORT	(2)	1	16973-000
11	CONTACT TIP (COOPER)	(5)	2	59665-001
12	CONTACT TIP (SILVER FACED)	(5)	2	16924-000
13	ARC TRANSFER TIP		1	16924-000
14	MOVING CONTACT HOLDER		1	59438-001
15	CONTACT HINGE PIN		1	68056-001
16	NON-MAGNETIC SPACER		1	16985-001
17	CONTACT SPRING		1	68000-001
18	ARMATURE ASSEMBLY	(3)	1	17595-000
19	CORE CAP		1	59433-000
20	COIL CORE		1	16940-000
21	ARMATURE HINGE PIN		1	59664-001
22	ARMATURE SPRING		1	59643-000
23	ARMATURE STOP		1	59437-000
24	OPERATING COIL		1	SEE TABLE 1
25	STATOR ASSEMBLY	(3)	1	59427-000
26	SPACER-BLOWOUT COIL	(2)	1	16941-000
27	SUPPORT MOUNTING BRACKET		1	67999-000
28	FLUX PLATE ASSEMBLY-LEFT HAND	(4)	1	16965-000
29	FLUX PLATE ASSEMBLY-RIGHT HAND	(4)	1	16964-000
30	LOWER CONNECTING BUSS		1	67997-002
31	SCREW 1/4-20 X 3/4 HEX HEAD		4	47246-064
32	LOCKWASHER 1/4" SPLIT		10	47252-038
33	WASHER 1/4" FLAT STEEL		1	47250-022
34	SCREW 5/16-18 X 5/8 HEX HEAD		5	47246-078
35	SCREW 1/4-20 X 5/8 HEX HD SS		2	47779-063
36	NUT 1/4-20 STEEL		1	47253-021
37	SCREW 1/4-20 X 7/8 TIL HD		1	47244-149
38	SCREW #10-24 X 3/8 RND HD		1	47241-127
39	NUT #10-24 STEEL		1	47253-016
40	SCREW #10-24 X 3/4 HEX HD		3	47246-047
41	STUD 3/8-16 X 1-5/8 LG		1	66475-014
42	SCREW 5/16-18 X 1/2 PL H CAP SC.		1	48624-304
43	SCREW 1/4-20 X 1 HX HD ST STL		1	47779-066
44	SCREW 1/4-20 X 2 1/2 HX HD		1	47246-073
45	LOCKWASHER 1/4" EXTERNAL TOOTH		2	47203-008
46	SCREW 1/4-20 X 1 1/2 FL HD BRASS		1	47685-108
47	SCREW 1/4-20 X 1 1/2 HX HD		1	47246-079
48	SCREW 5/16-18 X 3/4 HEX HD		4	47246-079
49	WASHER 5/16 FLAT STEEL		4	47250-005
50	LOCKWASHER 5/16 SPLIT		5	47252-039
51	NUT 5/16-18 HEX STEEL		4	47253-602
52	NUT 1/4-20 HEX STEEL		1	47253-001
53	LOCK WASHER #10 HEAVY SPLIT		4	47252-065
54	SCREW 1/4-20 X 1/2 HX HD SLOTTED		1	47245-051

ACCESSORIES

MUST BE ORDERED SEPARATELY - NOT FURNISHED WITH COMPLETE CONTACTOR

A	M	T
A AUXILIARY CONTACTS SINGLE (1 N.O. & 1 N.C.) PART NO. 68011-001 DOUBLE (2 N.O. & 1 N.C.) PART NO. 68011-002	M MECHANICAL INTERLOCK KIT KIT PART NO. 68041-008 SIZE 3" & 4" ADJUSTABLE INTERLOCK ASSEMBLY FOR STANDARD 5" CONTACTOR SPACING (NOT MANUAL-MAGNETIC DISCONNECT)	T THE BAR KIT KIT PART NO. 59400-004 FOR STANDARD 5" CONTACTOR SPACING (NOT MANUAL-MAGNETIC DISCONNECT)

● INCLUDES OPERATING STRIKER & MFG. HARDWARE
 REPAIR PARTS ON B-68011 PG. 1

REPAIR PARTS ON A-58671

REPAIR PARTS ON A-59400 PG. 1

NOTES

- COMPLETE CONTACTOR AVAILABLE WITHOUT MOUNTING PAN, TWO-POLE UNIT
- CONTRACTORS HAVE A UNIT MOUNTING PAN, PART NO. 68005-002
- ITEM 4 (TABLE 2) STANDARD, INCLUDES A WELDED TERMINAL BUSS SPECIAL, WELDED BLOWOUT INCLUDES ITEMS 4, 10, 26 & 43, 32.
- INCLUDES HINGE BEARINGS
- INCLUDES SUPPORT BOSS
- SELECT ONE ITEM ONLY (QUANTITIES AS SHOWN)

Rev	DATE	BY	DESCRIPTION
J			
I			
H			
G			
F			
E			
D	5-24-00	RK	AUX #68011 WAS 68040
C	07/14/97	RMJ	#42 WAS P/N 47244-160 IN ERROR
B	11/14/95	RMJ	REDRAWN & REV PER ECR 5210-272
A			

NUMBER	DATE	BY	DESCRIPTION
01	12/09/95	DR/TB/LM	DRG. NO. RPC-59430-1
02			
03			
04			
05			
06			
07			
08			
09			
10			
11			
12			

REPAIR PARTS BULL. 5110 & 5210
 NEMA SIZE 3 (100 AMP) CONTACTOR
 MOLDED BASE & CAST ARMATURE

DRG. NO. RPC-59430-1
 1 OF 1