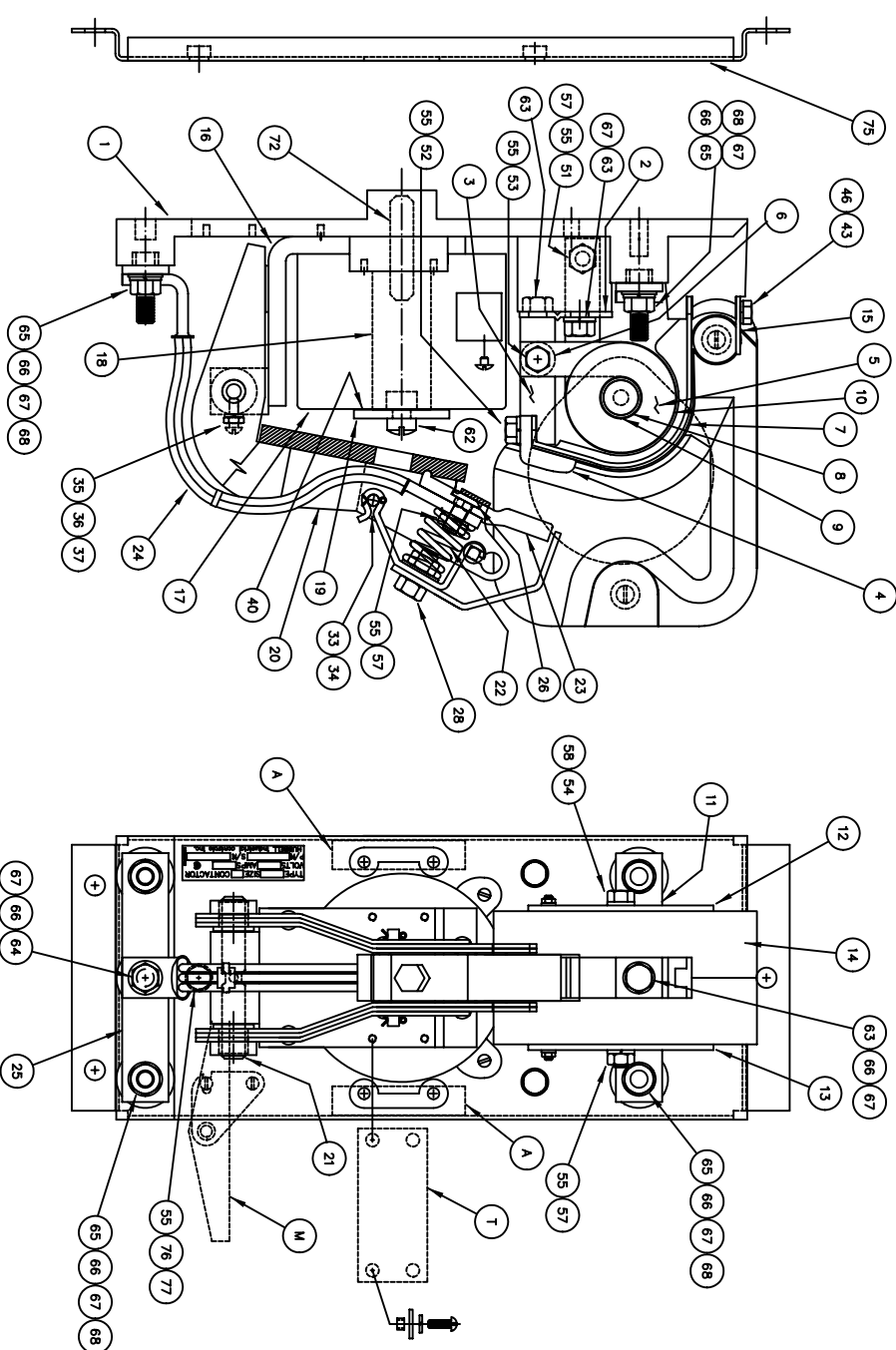


BULL. 5110 AC POWER, DC OPERATED
BULL. 5210 DC POWER, DC OPERATED

NOTE: WHEN ORDERING PARTS, FURNISH
1. BULLETIN NUMBER, NEMA SIZE, & SERIAL NUMBER FROM NAMEPLATE
2. PART NUMBER & DESCRIPTION

RPC-59351-1



ACCESSORIES

MUST BE ORDERED SEPARATELY - NOT FURNISHED WITH COMPLETE CONTACTOR

A1	AUXILIARY CONTACTS	M	MECHANICAL INTERLOCK KIT	T	THE BAR KIT
SINGLE (1 N.O. & 1 N.C.) PART NO. 68011-008 DOUBLE (2 N.O. & 2 N.C.) PART NO. 68011-009		PART NO. 68041-004 FOR STANDARD 6825 CONTACTOR SPACING (NOT MANUAL-MAGNETIC DISCONNECT)		PART NO. 59400-005 FOR STANDARD 6825* CONTACTOR SPACING (NOT MANUAL-MAGNETIC DISCONNECT)	
REPAIR PARTS ON B-68011 PG. 1.		REPAIR PARTS ON A-58671		REPAIR PARTS ON A-59400 PG. 1	

NOTES

- (1) COMPLETE CONTACTOR AVAILABLE WITHOUT MOUNTING PAN.
- (2) INCLUDES SUPPORT BOSS

VOLTS	PART NUMBER	OHMS	COLD
275	67890-001	1080	
230/250	67890-002	900	
115/125	67890-003	225	
75	67890-004	82	
57.5	67890-005	49	
24	67890-006	8.6	
36	67890-007	19	
12	67890-008	2.22	

LINE VOLTS	PART NUMBER	NOTES
125-230	18493-000	STANDARD
550-575	19974-000	SPECIAL

ITEM	DESCRIPTION	NOTES	PART NO.	QTY.
1	BASE		68022-001	1
2	MOUNTING FOOT		68023-000	1
3	STATIONARY CONTACT BRACKET		58718-000	1
4	CONTACT TIP (COPPER)		18402-000	1
5	CONTACT TIP (SILVER FACED)		18402-001	2
6	BLOWOUT COIL	SEE TABLE 2		
7	BLOWOUT COIL SPACER		18602-000	1
8	D.C. BLOWOUT CORE (SOLID)		66870-033 (1)	1
9	BLOWOUT INSULATING TUBE		18601-000	2
10	BLOWOUT INSULATING WASHER		18602-000	2
11	UPPER TERMINAL ASSEMBLY		68026-000	1
12	FLUX PLATE ASSEMBLY - LEFT HAND	(2)	18061-000	1
13	FLUX PLATE ASSEMBLY - RIGHT HAND	(2)	18062-000	1
14	ARC SHIELD ASSEMBLY		18063-000	1
15	ARC SHIELD RETAINER		59653-100	1
16	STATOR ASSEMBLY		19661-000	1
17	OPERATING COIL	SEE TABLE 1		
18	COIL CORE		58720-001	1
19	CORE CAP		19657-000	1
20	ARMATURE ASSEMBLY		18123-000	1
21	ARMATURE BEARING PIN		18048-000	1
22	SHUNT HOLDING SCREW		41728-000	1
23	CONTACT FINGER (COPPER)		41719-001	1
24	CONTACT FINGER (SILVER FACED)		41719-001	1
25	LOWER CONNECTING BUS		68027-001	1
26	CONTACT SPRING		68024-001	1
28	FINGER SPRING RETAINER ASSEMBLY		41734-000	1
33	SPRING RETAINER HINGE PIN		41733-000	1
34	COLTER PIN		57402-006	2
35	10-24 x 5/8 LG ROUND HEAD SCREW		47241-127	1
36	#10 SPRING LOCKWASHER		47252-036	1
37	10-24 HEX NUT		47253-016	1
40	NON-MAGNETIC SPACER		59645-000	1
43	1/4-20 X 1 1/2 HEX HEAD SCREW		47246-069	1
46	1/4 SPRING LOCKWASHER		47252-038	1
51	5/16-18 X 3/4 HEX HEAD SCREW		47246-079	1
52	5/16-18 X 1 STAINLESS STEEL SCREW		47779-081	1
53	5/16-18 X 1 1/2 STAINLESS STEEL SCREW		47779-083	1
54	5/16-18 X 3 1/2 HEX HEAD SCREW		47246-101	1
55	5/16 SPRING LOCKWASHER		47252-039	8
57	5/16-18 NUT		47253-602	2
58	5/16 INTERNAL STAR LOCKWASHER		47304-010	1
62	3/8-16 X 3/4 SLOTTED FLUSHER HEAD CAP SCR		48624-334	1
63	3/8-16 X 3/4 HEX HEAD SCREW		47246-102	3
64	3/8-16 X 1 HEX HEAD SCREW		47246-103	1
65	3/8-16 X 1 1/4 HEX HEAD SCREW		47246-104	4
66	3/8 WASHER STEEL		47250-020	6
67	3/8 SPRING LOCKWASHER		47252-040	7
68	3/8-16 NUT JAM		47253-603	4
72	STUD 1/2 - 13 X 1 15/16		66478-021	1
75	PAN ASSEMBLY	(1)	68038-000	1
76	5/16-18 X 1 HEX HEAD SCREW		47246-081	3
77	5/16-18 STEEL FLAT WASHER		47250-297	3

Rev	DATE	BY	DESCRIPTION
L	9-28-99	KR	REDRAWN TO CAD
K	9-27-99	RR	AUX WAS 68040
I	11-29-93	WSM	REMOVED ITEM 44, 1/4" FLAT WASHER
H	7-30-92	DND	EON 5210-186
G	5-8-91	BS	EON 5210-109
F	6-13-83	FB	REMOVED ITEM 48, ITEM 7 WAS 68032

Rev	DATE	BY	DESCRIPTION
E	12-17-82	RR/FB	ITEM 63 WAS QTY 2
D	6-4-81	FB	WAS P/N 18899
C	6-10-80	FB/SH	ADDED KIT P/N FOR AUX & INTERLOCK
B	5-8-80	FB	ADDED ITEM 40
A	5-8-80	FB	REV ITEM 24,26,28,29,31,32,33,34,42,43

Hubbell Industrial Control, Inc. DRG. NO. **RPC-59351-1**

DATE 11-12-79 DR. DUK

REPAIR PARTS BULL. 5110 & 5210
NEMA SIZE 5, 300 AMP CONTACTOR
MOUNTED BASE & WELDED ARMATURE

OK REF.