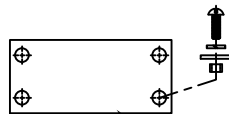


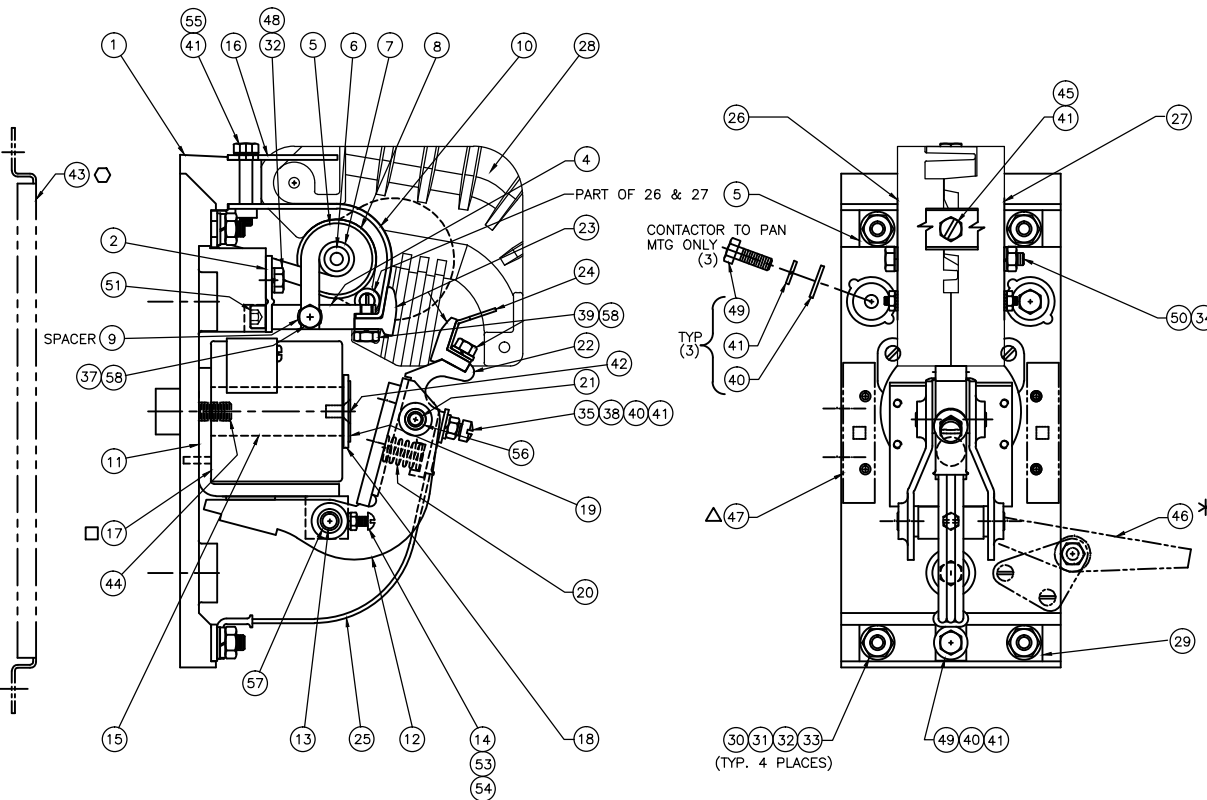
† CONTACT KIT 59672-007 INCLUDES COPPER CONTACT TIPS (ITEM 23), ARC HORN (ITEM 24), CONTACT SPRING (ITEM 20), AND HARDWARE (ITEMS 39 & 58).

†† CONTACT KIT 59672-008 INCLUDES SILVER CONTACT TIPS (ITEM 23), ARC HORN (ITEM 24), CONTACT SPRING (ITEM 20), AND HARDWARE (ITEMS 39 & 58).

††† CONTACT KIT 59672-018 INCLUDES SILVER TUNGSTEN CONTACT TIPS (ITEM 23), ARC HORN (ITEM 24), CONTACT SPRING (ITEM 20), AND HARDWARE (ITEMS 39 & 58).



52 ☆ ARMATURE TIE BAR INCLUDING MTG. HARDWARE USED WITH 5" POLE CENTERS FOR 2 POLE TIED CONTACTORS ITEM # 52 MUST BE ORDERED SEPARATELY.



THIS DRAWING FILE AND THE DATA SHOWN IS PROPRIETARY AND CONFIDENTIAL AND THE SOLE PROPERTY OF HUBBELL INDUSTRIAL CONTROLS. DO NOT USE OR REPRODUCE WITHOUT WRITTEN APPROVAL OF HUBBELL.

NOTE: WHEN ORDERING PARTS, FURNISH THE FOLLOWING INFORMATION

1. BULLETIN NUMBER, NEMA SIZE, & SERIAL NUMBER FROM NAMEPLATE.
2. PART NUMBER & DESCRIPTION

ITEM	DESCRIPTION	QTY	PART NO.
1	BASE	1	67995-002
2	CONTACT SUPPORT BRACKET	1	67999-000
3			
4	STATIONARY CONTACT BRACKET	1	58665-002
5	BLOWOUT COIL TERMINAL ASSEMBLY-STD.	1	67998-006
5	BLOWOUT COIL ASSEMBLY - 550 VOLT	1	67998-008
5	SHOCK RESISTANT WELDED BLOWOUT ASSEMBLY	1	67998-012
6	BLOWOUT COIL CORE	1	66870-034
7	B.O. CORE INSULATOR	1	17351-000
8	B.O. COIL INSULATOR WASHER	2	16961-000
9	B.O. COIL SPACER	1	16971-000
10	B.O. GUARD	1	68054-002
11	STATOR ASSEMBLY	1	17356-000
12	ARMATURE ASSEMBLY	1	17354-000
13	ARMATURE BEARING PIN	1	58843-000
14	HINGE PIN SCREW 10-24 X 5/8 LG RND HD	1	47241-127
15	STATOR CORE	1	58664-001
16	ARC SHIELD RETAINER	1	59653-100
17	OPERATING COIL-230/250 VOLTS	1	17359-000
17	OPERATING COIL 115/125 VOLTS	1	17487-000
17	OPERATING COIL 57.5 VOLTS	1	17488-000
18	CORE CAP	1	16940-000
19	NON MAGNETIC SPACER	1	19683-001
20	CONTACT SPRING	1	16960-000
21	CONTACT BEARING PIN	1	16968-000
22	MOVABLE CONTACT HOLDER	1	16927-000
23	CONTACT TIP - STANDARD	2	17279-000
23	CONTACT TIP - SILVER	2	17279-001
23	CONTACT TIP - SILVER TUNGSTEN	2	17279-003
24	ARC HORN	1	68056-001
25	SHUNT ASSEMBLY	1	68000-002
26	FLUX PLATE ASSEMBLY L.H.	1	16965-000
27	FLUX PLATE ASSEMBLY R.H.	1	16964-000
28	ARC SHIELD ASSEMBLY	1	59694-501
29	TERMINAL - BOTTOM	1	67997-002
30	5/16-18 HEX NUT STEEL	4	47253-602
31	5/16 FLAT WASHER STEEL	4	47250-505
32	5/16 SPLIT LOCKWASHER	5	47252-039
33	5/16-18 X 3/4 HEX HD CAP SCREW STEEL	4	47246-079
34	1/4-20 HEX NUT - JAM	1	47253-601
35	1/4-20 HEX NUT - STEEL	1	47253-021
36	1/4-20 X 2-3/4 HEX HD CAP SCREW	1	47246-094
37	1/4 20 X 1 HEX HD CAP SCR STAINLESS	1	47779-066
38	1/4-20 X 7/8 SL FILLISTER HD SCREW	1	47244-149
39	1/4-20 X 5/8 HEX HD CAP SCR. STAINLESS	2	47779-063
40	1/4 FLAT WASHER STEEL	5	47250-502
41	1/4 SPLIT LOCK WASHER	7	47252-038
42	1/4-20 X 1/2 S.S. FLAT HD CAP SCREW	1	49144-108
43	MOUNTING PAN - STEEL	1	68005-001
44	3/8-16 X 1-5/8 LG. STUD - STEEL	1	66475-014
45	1/4-20 X 1/2 HEX HD CAP SCREW SLOTTED	1	47245-061
46	MECHANICAL INTERLOCK ASSEMBLY (KIT)		PER ORDER
47	AUX. ASSEM. (N.O. & N.C. CONTACTS) (KIT)		AS REQUIRED
48	5/16-18 X 5/8 HEX HD CAP SCR	1	47246-078
49	1/4-20 X 3/4 HEX HD CAP SCR	4	47246-084
50	1/4" LOCKWASHER - EXTERNAL TOOTH	2	47303-008
51	5/16-18 X 1/2 SOCKET HD. CAP SCREW	1	47100-504
52	TIE BAR KIT (FOR 2 POLE TIED CONTACTORS ONLY)		59400-001
53	#10 LOCKWASHER - HEAVY SPLIT	1	47252-065
54	#10-24 HEX NUT	1	47253-016
55	1/4-20 X 1-1/2 HEX HD CAP SCREW	1	47246-069
56	HINGE PIN BUSHING	2	16954-000
57	ARMATURE PIN BUSHING	2	16953-000
58	1/4 SPLIT LOCK WASHER, STAINLESS STEEL	3	47252-238

605	613	57.5	SHOCK RESISTANT WELDED BLOWOUT ASSEMBLY
603	611	115/125	& SILVER FACED CONTACTS
601	609	230/250	
405	413	57.5	SHOCK RESISTANT WELDED BLOWOUT ASSEMBLY
403	411	115/125	
401	409	230/250	
303	306	57.5	SILVER FACED CONTACTS
302	305	115/125	
301	304	230/250	
503	506	57.5	POWER LINE VOLTAGE
502	505	115/125	
501	504	230/250	550 V. DC ONLY
005	013	57.5	STANDARD
003	011	115/125	
001	009	230/250	

- △ AUXILIARY CONTROL CONTACT ASSEMBLY (INCLUDING KNOCKER) P/N 68011-001 SINGLE BLOCK UNIT P/N 68011-002 DOUBLE BLOCK UNIT TO BE ORDERED SEPARATELY. AUXILIARY CONTROL CONTACT ASSEMBLY IS NOT INCLUDED IN COMPLETE CONTACTOR ASSEMBLY.
- SELECT ONE ITEM ONLY (QUANTITIES AS SHOWN)
- * INTERLOCK BAR ASSEMBLY P/N 68041-003 TO BE ORDERED SEPARATELY. REFER TO REPAIR PARTS PRINT A-58671 INTERLOCK BAR ASSEMBLY IS NOT INCLUDED WITH COMPLETE CONTACTOR ASSEMBLY.
- WELDED BLOWOUT ASSEMBLY INCLUDES ITEMS 4, 5, 9, 37, & 41.

SUFFIX	SUFFIX	DC OPERATING COIL (VOLTS)
COMPLETE ASSEMBLY PART NO. 59345- WITH STEEL MOUNTING PAN	COMPLETE ASSEMBLY PART NO. 59345- WITHOUT STEEL MOUNTING PAN	ITEM 17

J				E 072012	KEG	NEW ARC CHUTE ECN A12-053	
I				D 070611	LMH	ITEM 42 WAS 47665-108 ECN A11-0068	
H				C 060508	LMH	UPDATE HARDWARE ADD KIT INFO ECR A08-00082	
G				B 5-24-00	KR	AUX #68011 WAS 68040	
F	030113	KEG	ECN A13-019 CHANGE SCREW	A 111495	RWJ	REDRAWN & REV PER ECN 5210-272	
Rev	DATE	BY	DESCRIPTION	Rev	DATE	BY	DESCRIPTION

LINEAR	HOLE	ANGLES
0.X = ±.020	PUNCH ±.002	DIMEN. ± 1°
0.XX = ±.020	±.00	UNDM. 90° ±2°
0.XXX = ±.005	±.00	
CADD NO. 59345100		
R.M.S. DATE 12/08/95		

BULL. 5210 REPAIR PARTS FOR 150 AMP (SIZE 4) MOLDED BASE DC CONTACTOR WELDED ARMATURE

DRG. NO. 1 OF 1

RPC-59345-1