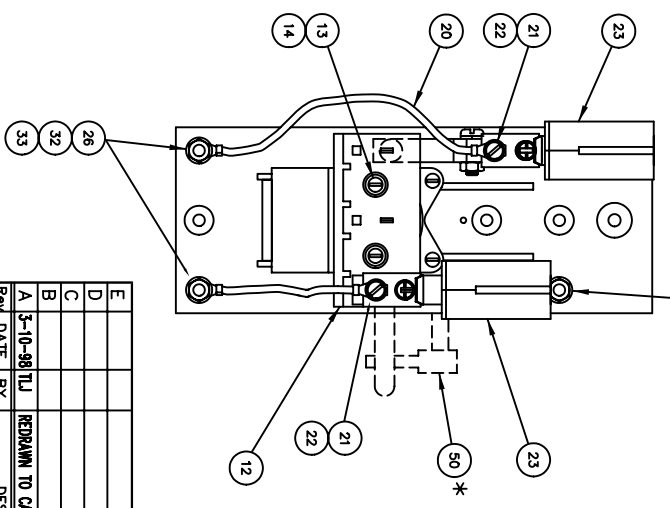
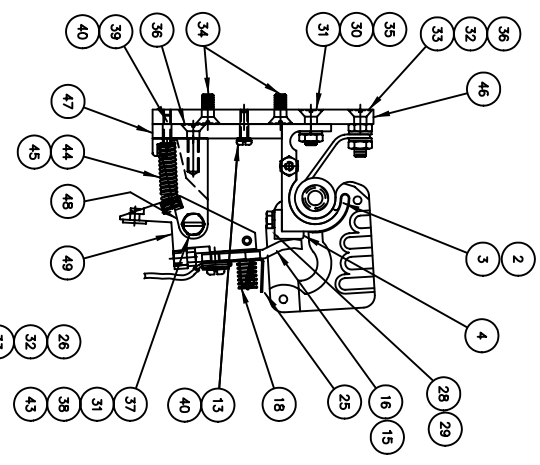
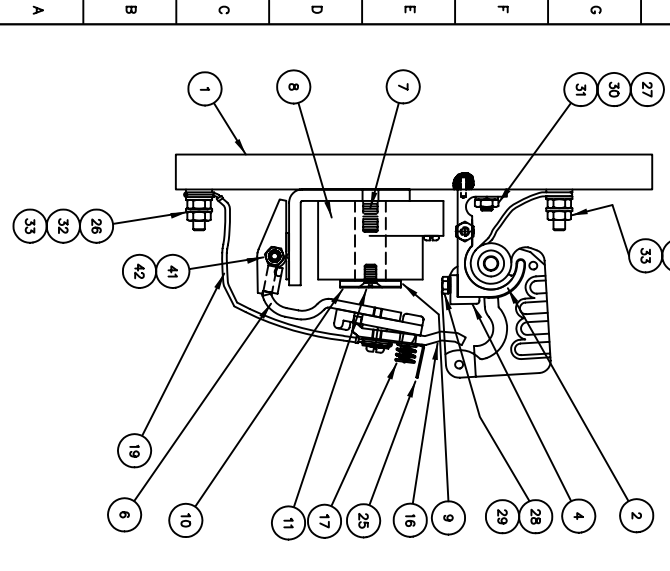


ITEM 1	ITEM 2	ITEM 2/3
201	AG 50 AMP	CU 50 AMP
202	AG 50 AMP	CU 50 AMP
203	AG 50 AMP	CU 50 AMP
301	AG 50 AMP	AG 50 AMP
302	AG 25 AMP	AG 25 AMP
303	AG 15 AMP	AG 15 AMP
304	AG 10 AMP	AG 10 AMP
305	AG 5 AMP	AG 5 AMP
306	AG 10 AMP	AG 10 AMP

ITEM	DESCRIPTION	PART NO.	QTY.
46	STATIONARY MOUNTING BASE	59508-000	1
47	PIVOT MOUNTING BASE	59508-001	1
48	FINGER SADDLE SUPPORT	17713-000	1
49	FINGER SADDLE ASSEMBLY	70473-002	1
50	MECHANICAL INTERLOCK ASSEMBLY (2 POLE CONTACTOR) (KIT)	69041-002	1

NOTE: AUXILIARY CONTROL CONTACTS CAN NOT BE ADDED TO THIS CONTRACTOR ASSEMBLY.

* MECHANICAL INTERLOCK ASSEMBLY ITEM #50 IS NOT INCLUDED WITH COMPLETE CONTRACTOR ASSEMBLY. MUST BE ORDERED SEPARATELY.



SELECT ONE ITEM ONLY (QUANTITIES AS SHOWN)

ITEM	DESCRIPTION	PART NO.	QTY.
1	BASE	69013-003	1
2	SIZE 2 UPRIGHT, AG CONTACT & BLOWOUT COIL ASSEMBLY (50 AMP)	59852-104	2
2	SIZE 2 UPRIGHT, AG CONTACT & BLOWOUT COIL ASSEMBLY (25 AMP)	59852-105	2
2	SIZE 2 UPRIGHT, AG CONTACT & BLOWOUT COIL ASSEMBLY (15 AMP)	59852-110	2
2	SIZE 2 UPRIGHT, AG CONTACT & BLOWOUT COIL ASSEMBLY (10 AMP)	59852-111	2
3	SIZE 2 UPRIGHT, AG CONTACT & BLOWOUT COIL ASSEMBLY (5 AMP)	59852-112	2
3	SIZE 2 UPRIGHT, CU CONTACT & BLOWOUT COIL ASSEMBLY (50 AMP)	59852-101	1
3			
4	SIZE 2 STATIONARY CONTACT (COPPER)	02317-000	2
4	SIZE 2 STATIONARY CONTACT (SILVER)	02317-001	2
6	ARMATURE-STATOR, HINGE PIN, & CORE ASSEMBLY	59675-003	1
7	.312-18 X 1.250 LONG STUD	66475-017	1
8	COIL (115/125V D.C.)	68014-002	1
8	COIL (230/250V D.C.)	68014-001	1
8	COIL (57.5V D.C.)	68014-003	1
8			
9	CORE CAP	18048-000	1
10	NONMAGNETIC SPACER	19683-001	1
11	.250-20 X .500 LONG FLAT HEAD SCREW BRASS	47665-108	1
12	FINGER BOARD	42005-000	1
12	#8-32 X .625 LONG ROUND HEAD SCREW	47241-104	3
14	#8 SPLIT LOCK WASHER	47252-064	2
15	MOVABLE FINGER SIZE 2 (COPPER)	05722-000	1
16	MOVABLE FINGER SIZE 2 (SILVER)	05722-001	2
17	FINGER SPRING	08838-000	1
18	FINGER SPRING	17716-000	1
19	FINGER SHUNT	04873-000	1
20	FINGER SHUNT	04873-001	1
21	#10-32 X .375 LONG SEMS. SCREW BRASS	49138-083	2
22	#10 FLAT WASHER BRASS	47251-008	2
23	ARC SHIELD ASSEMBLY SIZE 2	42886-001	2
25	ARC HORN	42029-000	2
26	.250-20 X 1.31 LONG STUD	66457-015	3
27	.250-20 X .875 LONG STUD	66457-016	1
28	#10-24 X .375 LONG HEX HEAD SCREW S.S.	47779-042	2
29	#10 SPLIT LOCK WASHER	47252-065	2
30	.250 SPLIT LOCK WASHER	48252-038	2
31	.250-20 HEX NUT STEEL	47253-021	3
32	.250 FLAT WASHER - BRASS	47251-041	11
33	.250-20 HEX NUT - BRASS	47294-011	2
34	.250-20 X .625 FLAT HEAD SCREW	47240-168	8
35	.250-20 X .750 FLAT HEAD SCREW	47240-169	1
36	.250-20 X .875 FLAT HEAD SCREW	47240-170	2
37	.250-20 X 1.000 ROUND HEAD SCREW	47241-195	1
38	.250 EXTERNAL LOCKWASHER	47304-009	1
39	#8-32 X .750 ROUND HEAD SCREW	47241-105	1
40	#8 INTERNAL LOCKWASHER	47304-006	2
41	#10 EXTERNAL WASHER	47303-006	1
42	#10-32 BRASS HEX NUT	47254-009	1
43	SEAMLESS STEEL TUBE	17719-000	1
44	COMPRESSION RETURN SPRING	17717-000	1
45	SPRING DAMPENER (BULMER)	70851-001	1

THESE ITEMS ARE INCLUDED IN THE UPRIGHT, CONTACT & BLOWOUT ASSEMBLY.

REVISION	DATE	BY	DESCRIPTION
A	3-10-98	TJ	REDRAWN TO CAD, REVISED DRAWING

BULL 5210 REPAIR PARTS FOR SIZE #2
SIZE 2 50 AMP N.O./N.C.
MOLDED BASE DC CONTACTOR

DATE: 2-6-84
 DRG. NO. RPC-59325-2
 1 OF 1