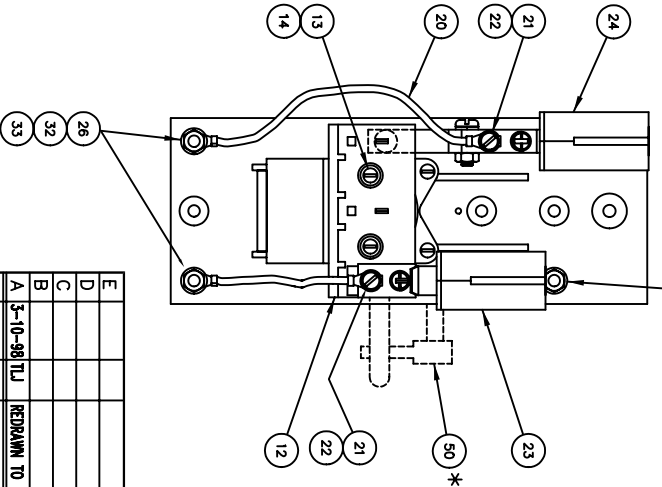
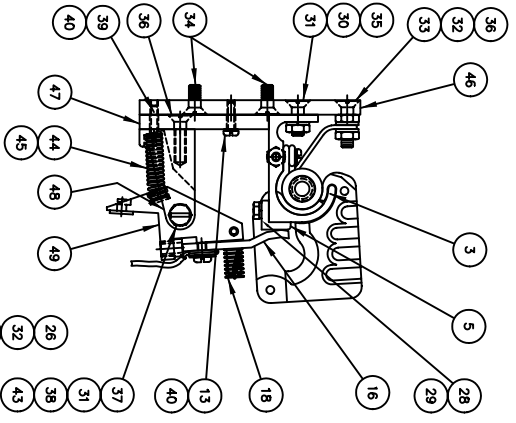
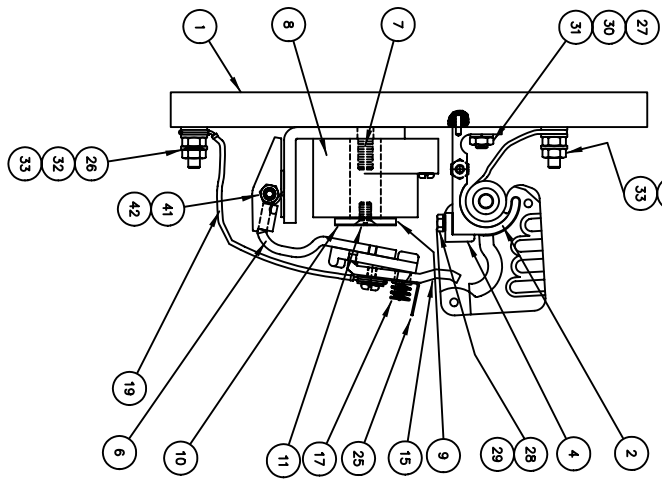


ITEM	DESCRIPTION	PART NO.	QTY.
46	STATIONARY MOUNTING BASE	59508-000	1
47	PIVOT MOUNTING BASE	59508-001	1
48	FINGER SADDLE SUPPORT	17713-000	1
49	FINGER SADDLE ASSEMBLY	70473-002	1
50	MECHANICAL INTERLOCK ASSEMBLY (2 POLE CONTACTOR) (KIT)	68041-002	1

COMPLETE ASSEMBLY PART NOS	ITEM 8	ITEM 2	ITEM 3
59325-XXX	N.O. POLE CONTACTOR BLOWOUT (VOLTS)	N.C. POLE CONTACTOR BLOWOUT (AMPS)	N.C. POLE CONTACTOR BLOWOUT (AMPS)
101	CU 50 AMP CU 10 AMP	CU 50 AMP CU 10 AMP	CU 10 AMP
102	CU 50 AMP CU 10 AMP	CU 50 AMP CU 10 AMP	CU 10 AMP
103	CU 50 AMP CU 10 AMP	CU 50 AMP CU 10 AMP	CU 10 AMP
104	CU 5 AMP CU 5 AMP	CU 5 AMP CU 5 AMP	CU 5 AMP
105	CU 5 AMP CU 5 AMP	CU 5 AMP CU 5 AMP	CU 5 AMP
106	CU 25 AMP CU 10 AMP	CU 25 AMP CU 10 AMP	CU 10 AMP
107	CU 25 AMP CU 10 AMP	CU 25 AMP CU 10 AMP	CU 10 AMP

NOTE: AUXILIARY CONTROL CONTACTS CAN NOT BE ADDED TO THIS CONTACTOR ASSEMBLY.
 * MECHANICAL INTERLOCK ASSEMBLY ITEM #50 IS NOT INCLUDED WITH COMPLETE CONTACTOR ASSEMBLY. MUST BE ORDERED SEPARATELY.



SELECT ONE ITEM ONLY (QUANTITIES AS SHOWN)

ITEM	DESCRIPTION	PART NO.	QTY.
1	BASE	68013-003	1
2	SIZE 2 UPRIGHT, CU CONTACT & BLOWOUT COIL ASSEMBLY (50 AMP)	58852-101	1
2	SIZE 2 UPRIGHT, CU CONTACT & BLOWOUT COIL ASSEMBLY (25 AMP)	58852-102	1
2	SIZE 2 UPRIGHT, CU CONTACT & BLOWOUT COIL ASSEMBLY (5 AMP)	58852-107	1
3	SIZE 1 UPRIGHT, CU CONTACT & BLOWOUT COIL ASSEMBLY (5 AMP)	58851-102	1
3	SIZE 1 UPRIGHT, CU CONTACT & BLOWOUT COIL ASSEMBLY (10 AMP)	58851-103	1
4	SIZE 2 STATIONARY CONTACT (COPPER)	02317-000	1
5	SIZE 1 STATIONARY CONTACT (COPPER)	02315-000	1
6	ARMATURE-STATOR, HINGE PIN, & CORE ASSEMBLY	58675-003	1
7	312-18 X 1.250 LONG STUD	66475-017	1
8	COIL (115/125V D.C.)	68014-002	1
8	COIL (230/250V D.C.)	68014-001	1
8	COIL (57.5V D.C.)	68014-003	1
9	CORE CAP	18048-000	1
10	NONMAGNETIC SPACER	19683-001	1
11	250-20 X .500 LONG FLAT HEAD SCREW BRASS	47665-108	1
12	FINGER BOARD	42000-000	1
13	#8-32 X .625 LONG ROUND HEAD SCREW	47241-104	3
14	#8 SPLIT LOCK WASHER	47252-064	2
15	MOVABLE FINGER SIZE 2	05722-000	1
16	MOVABLE FINGER SIZE 1	05721-000	1
17	FINGER SPRING	08838-000	1
18	FINGER SPRING	17716-000	1
19	FINGER SHUNT	04873-000	1
20	FINGER SHUNT	04870-002	1
21	#10-32 X .375 LONG SEMS. SCREW BRASS	49138-083	2
22	#10 FLAT WASHER BRASS	47251-008	2
23	ARC SHIELD ASSEMBLY SIZE 2	42855-001	1
24	ARC SHIELD ASSEMBLY SIZE 1	42856-001	1
25	ARC HORN	42859-000	1
26	280-20 X 1.31 LONG STUD	66457-015	3
27	250-20 X .875 LONG STUD	66457-016	2
28	#10-24 X .375 LONG HEX HEAD SCREW S.S.	47779-042	2
29	#10 SPLIT LOCK WASHER	47252-065	2
30	250 SPLIT LOCK WASHER	48252-038	2
31	250-20 HEX NUT STEEL	47253-021	3
32	250 FLAT WASHER - BRASS	47251-041	11
33	250-20 HEX NUT - BRASS	47254-011	2
34	250-20 X .625 FLAT HEAD SCREW	47240-168	8
35	250-20 X .750 FLAT HEAD SCREW	47240-169	1
36	250-20 X .875 FLAT HEAD SCREW	47240-170	2
37	250-20 X 1.000 ROUND HEAD SCREW	47241-195	1
38	250 EXTERNAL LOCKWASHER	47304-009	1
39	#8-32 X .750 ROUND HEAD SCREW	47304-105	1
40	#8 INTERNAL LOCKWASHER	47304-006	2
41	#10 EXTERNAL WASHER	47303-006	1
42	#10-32 BRASS HEX NUT	47254-009	1
43	SEAMLESS STEEL TUBE	17719-000	1
44	COMPRESSION RETURN SPRING	17717-000	1
45	SPRING DAMPENER (BUMPER)	70951-001	1

THESE ITEMS ARE INCLUDED IN THE UPRIGHT, CONTACT & BLOWOUT ASSEMBLY.

REPAIR PARTS DRAWING FOR NO./NC (#2 SIZE) MAGNETIC CONTACTOR	NOTE: WHEN ORDERING REPAIR PARTS BE SURE TO FURNISH SERIAL NUMBER AND TYPE NUMBER WHICH ARE LOCATED ON THE NAMEPLATE, ALSO THE PART NAME AND PART NUMBER.
1	BASE
2	SIZE 2 UPRIGHT, CU CONTACT & BLOWOUT COIL ASSEMBLY (50 AMP)
2	SIZE 2 UPRIGHT, CU CONTACT & BLOWOUT COIL ASSEMBLY (25 AMP)
2	SIZE 2 UPRIGHT, CU CONTACT & BLOWOUT COIL ASSEMBLY (5 AMP)
3	SIZE 1 UPRIGHT, CU CONTACT & BLOWOUT COIL ASSEMBLY (5 AMP)
3	SIZE 1 UPRIGHT, CU CONTACT & BLOWOUT COIL ASSEMBLY (10 AMP)
4	SIZE 2 STATIONARY CONTACT (COPPER)
5	SIZE 1 STATIONARY CONTACT (COPPER)
6	ARMATURE-STATOR, HINGE PIN, & CORE ASSEMBLY
7	312-18 X 1.250 LONG STUD
8	COIL (115/125V D.C.)
8	COIL (230/250V D.C.)
8	COIL (57.5V D.C.)
9	CORE CAP
10	NONMAGNETIC SPACER
11	250-20 X .500 LONG FLAT HEAD SCREW BRASS
12	FINGER BOARD
13	#8-32 X .625 LONG ROUND HEAD SCREW
14	#8 SPLIT LOCK WASHER
15	MOVABLE FINGER SIZE 2
16	MOVABLE FINGER SIZE 1
17	FINGER SPRING
18	FINGER SPRING
19	FINGER SHUNT
20	FINGER SHUNT
21	#10-32 X .375 LONG SEMS. SCREW BRASS
22	#10 FLAT WASHER BRASS
23	ARC SHIELD ASSEMBLY SIZE 2
24	ARC SHIELD ASSEMBLY SIZE 1
25	ARC HORN
26	280-20 X 1.31 LONG STUD
27	250-20 X .875 LONG STUD
28	#10-24 X .375 LONG HEX HEAD SCREW S.S.
29	#10 SPLIT LOCK WASHER
30	250 SPLIT LOCK WASHER
31	250-20 HEX NUT STEEL
32	250 FLAT WASHER - BRASS
33	250-20 HEX NUT - BRASS
34	250-20 X .625 FLAT HEAD SCREW
35	250-20 X .750 FLAT HEAD SCREW
36	250-20 X .875 FLAT HEAD SCREW
37	250-20 X 1.000 ROUND HEAD SCREW
38	250 EXTERNAL LOCKWASHER
39	#8-32 X .750 ROUND HEAD SCREW
40	#8 INTERNAL LOCKWASHER
41	#10 EXTERNAL WASHER
42	#10-32 BRASS HEX NUT
43	SEAMLESS STEEL TUBE
44	COMPRESSION RETURN SPRING
45	SPRING DAMPENER (BUMPER)

ITEM	DESCRIPTION
A	3-10-98 TLJ REDRAWN TO CAD, REVISED DRAWING
B	
C	
D	
E	

UNITS	INCHES	MILLIMETERS
0.125	1/8	3.175
0.250	1/4	6.350
0.375	3/8	9.525
0.500	1/2	12.700
0.625	5/8	15.875
0.750	3/4	19.050
1.000	1	25.400
1.250	1 1/4	31.750
1.500	1 1/2	38.100
1.750	1 3/4	44.450
2.000	2	50.800
2.250	2 1/4	59.150
2.500	2 1/2	63.500
2.750	2 3/4	70.150
3.000	3	76.200
3.250	3 1/4	85.800
3.500	3 1/2	88.900
3.750	3 3/4	95.250
4.000	4	101.600
4.250	4 1/4	110.800
4.500	4 1/2	114.300
4.750	4 3/4	120.650
5.000	5	127.000
5.250	5 1/4	136.800
5.500	5 1/2	140.300
5.750	5 3/4	146.650
6.000	6	152.400
6.250	6 1/4	161.600
6.500	6 1/2	165.100
6.750	6 3/4	171.450
7.000	7	177.800
7.250	7 1/4	187.000
7.500	7 1/2	190.500
7.750	7 3/4	196.850
8.000	8	203.200
8.250	8 1/4	212.400
8.500	8 1/2	215.900
8.750	8 3/4	222.250
9.000	9	228.600
9.250	9 1/4	237.800
9.500	9 1/2	241.300
9.750	9 3/4	247.650
10.000	10	254.000

UNITS	INCHES	MILLIMETERS
0.125	1/8	3.175
0.250	1/4	6.350
0.375	3/8	9.525
0.500	1/2	12.700
0.625	5/8	15.875
0.750	3/4	19.050
1.000	1	25.400
1.250	1 1/4	31.750
1.500	1 1/2	38.100
1.750	1 3/4	44.450
2.000	2	50.800
2.250	2 1/4	59.150
2.500	2 1/2	63.500
2.750	2 3/4	70.150
3.000	3	76.200
3.250	3 1/4	85.800
3.500	3 1/2	88.900
3.750	3 3/4	95.250
4.000	4	101.600
4.250	4 1/4	110.800
4.500	4 1/2	114.300
4.750	4 3/4	120.650
5.000	5	127.000
5.250	5 1/4	136.800
5.500	5 1/2	140.300
5.750	5 3/4	146.650
6.000	6	152.400
6.250	6 1/4	161.600
6.500	6 1/2	165.100
6.750	6 3/4	171.450
7.000	7	177.800
7.250	7 1/4	187.000
7.500	7 1/2	190.500
7.750	7 3/4	196.850
8.000	8	203.200
8.250	8 1/4	212.400
8.500	8 1/2	215.900
8.750	8 3/4	222.250
9.000	9	228.600
9.250	9 1/4	237.800
9.500	9 1/2	241.300
9.750	9 3/4	247.650
10.000	10	254.000

UNITS	INCHES	MILLIMETERS
0.125	1/8	3.175
0.250	1/4	6.350
0.375	3/8	9.525
0.500	1/2	12.700
0.625	5/8	15.875
0.750	3/4	19.050
1.000	1	25.400
1.250	1 1/4	31.750
1.500	1 1/2	38.100
1.750	1 3/4	44.450
2.000	2	50.800
2.250	2 1/4	59.150
2.500	2 1/2	63.500
2.750	2 3/4	70.150
3.000	3	76.200
3.250	3 1/4	85.800
3.500	3 1/2	88.900
3.750	3 3/4	95.250
4.000	4	101.600
4.250	4 1/4	110.800
4.500	4 1/2	114.300
4.750	4 3/4	120.650
5.000	5	127.000
5.250	5 1/4	136.800
5.500	5 1/2	140.300
5.750	5 3/4	146.650
6.000	6	152.400
6.250	6 1/4	161.600
6.500	6 1/2	165.100
6.750	6 3/4	171.450
7.000	7	177.800
7.250	7 1/4	187.000
7.500	7 1/2	190.500
7.750	7 3/4	196.850
8.000	8	203.200
8.250	8 1/4	212.400
8.500	8 1/2	215.900
8.750	8 3/4	222.250
9.000	9	228.600
9.250	9 1/4	237.800
9.500	9 1/2	241.300
9.750	9 3/4	247.650
10.000	10	254.000