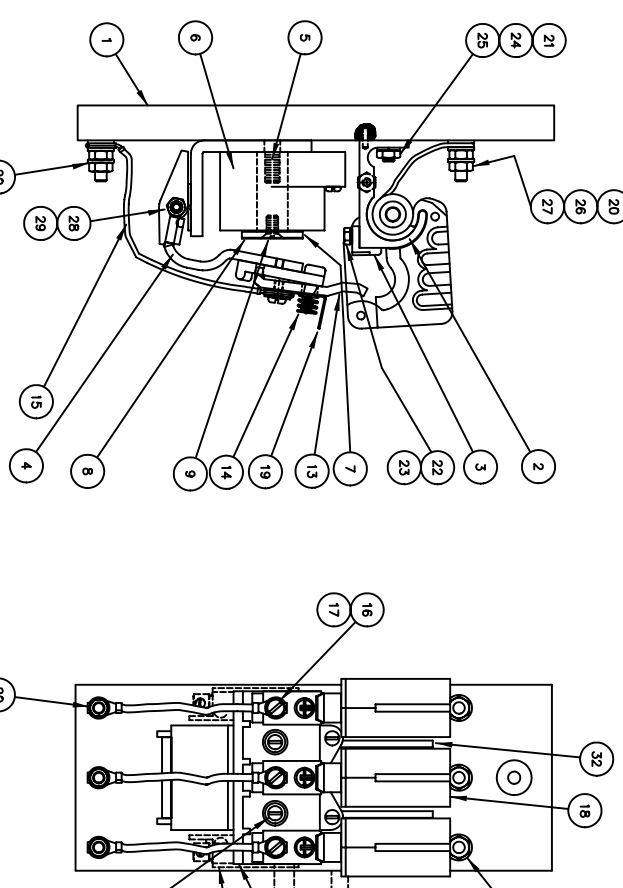


ITEM 1	ITEM 2	ITEM 3	ITEM 4	ITEM 5	ITEM 6	ITEM 7	ITEM 8	ITEM 9	ITEM 10	ITEM 11	ITEM 12	ITEM 13	ITEM 14	ITEM 15	ITEM 16	ITEM 17	ITEM 18	ITEM 19	ITEM 20	ITEM 21	
1	OPERATING BLOWOUT (AMPS)	1	OPERATING BLOWOUT (AMPS)	1	OPERATING BLOWOUT (AMPS)	1	OPERATING BLOWOUT (AMPS)	1	OPERATING BLOWOUT (AMPS)	1	OPERATING BLOWOUT (AMPS)	1	OPERATING BLOWOUT (AMPS)	1	OPERATING BLOWOUT (AMPS)	1	OPERATING BLOWOUT (AMPS)	1	OPERATING BLOWOUT (AMPS)	1	OPERATING BLOWOUT (AMPS)
2	OPERATING BLOWOUT (AMPS)	2	OPERATING BLOWOUT (AMPS)	2	OPERATING BLOWOUT (AMPS)	2	OPERATING BLOWOUT (AMPS)	2	OPERATING BLOWOUT (AMPS)	2	OPERATING BLOWOUT (AMPS)	2	OPERATING BLOWOUT (AMPS)	2	OPERATING BLOWOUT (AMPS)	2	OPERATING BLOWOUT (AMPS)	2	OPERATING BLOWOUT (AMPS)	2	OPERATING BLOWOUT (AMPS)
3	OPERATING BLOWOUT (AMPS)	3	OPERATING BLOWOUT (AMPS)	3	OPERATING BLOWOUT (AMPS)	3	OPERATING BLOWOUT (AMPS)	3	OPERATING BLOWOUT (AMPS)	3	OPERATING BLOWOUT (AMPS)	3	OPERATING BLOWOUT (AMPS)	3	OPERATING BLOWOUT (AMPS)	3	OPERATING BLOWOUT (AMPS)	3	OPERATING BLOWOUT (AMPS)	3	OPERATING BLOWOUT (AMPS)

△ AUXILIARY CONTROL ASSEMBLY P/N 68011-003 TO BE ORDERED SEPARATELY. AUXILIARY CONTROL.
 * MECHANICAL INTERLOCK ASSEMBLY P/N 68041-002 FOR 2 & 3 POLE CONTACTORS. MECHANICAL INTERLOCK ASSEMBLY IS NOT INCLUDED WITH COMPLETE CONTACTOR ASSEMBLY.



SELECT ONE ITEM ONLY (QUANTITIES AS SHOWN)

ITEM	DESCRIPTION	PART NO.	QTY.	POLE	QTY.
1	BASE	68013-003	1	1	1
2	UPRIGHT, CU CONTACT & BLOWOUT COIL ASSEMBLY (50 AMP)	58882-101	1	2	3
2	UPRIGHT, CU CONTACT & BLOWOUT COIL ASSEMBLY (25 AMP)	58882-102	1	2	3
2	UPRIGHT, AG CONTACT & BLOWOUT COIL ASSEMBLY (50 AMP)	58882-104	1	2	3
2	UPRIGHT, AG CONTACT & BLOWOUT COIL ASSEMBLY (25 AMP)	58882-105	1	2	3
2	UPRIGHT, AG CONTACT & BLOWOUT COIL ASSEMBLY (38 AMP)	58882-106	1	2	3
2	UPRIGHT, CU CONTACT & BLOWOUT COIL ASSEMBLY (5 AMP)	58882-107	1	2	3
2	UPRIGHT, CU CONTACT & BLOWOUT COIL ASSEMBLY (15 AMP)	58882-109	1	2	3
3	STATIONARY CONTACT (SILVER CAD-OXIDE FACED)	02317-000	1	2	3
4	ARMATURE-STATOR, HINGE PIN, & CORE ASSEMBLY	58675-003	1	1	1
5	COIL (115/125V D.C.)	66475-017	1	1	1
6	COIL (230/250V D.C.)	68014-002	1	1	1
6	COIL (57.5V D.C.)	68014-003	1	1	1
6	COIL (24V D.C.)	68014-004	1	1	1
6	COIL (48V D.C.)	68014-005	1	1	1
6	COIL (108V D.C.)	68014-010	1	1	1
6	COIL (216V D.C.)	68014-009	1	1	1
6	COIL (460/500V D.C.)	68014-012	1	1	1
6	COIL (550V D.C.)	68014-011	1	1	1
6	COIL (12V D.C.)	68014-007	1	1	1
6	COIL (75V D.C.)	68014-003	1	1	1
6	COIL (38V D.C.)	68014-006	1	1	1
7	CORE CAP	18048-000	1	1	1
8	NONMAGNETIC SPACER	19663-001	1	1	1
9	.250-20 X .500 LONG FLAT HEAD SCREW BRASS	47685-108	1	1	1
11	FINGER BOARD	42005-000	1	1	1
11	#8-32 X .625 LONG ROUND HEAD SCREW	47241-104	2	2	2
12	#8 SPLIT LOCK WASHER	47252-064	2	2	2
13	MOVABLE FINGER	05722-000	1	2	3
13	MOVABLE FINGER (SILVER FACED)	05722-001	1	2	3
14	FINGER SPRING	08838-000	1	2	3
14	FINGER SHUNT	04657-000	1	2	3
15	FINGER SPRING	04873-000	1	2	3
16	#10-32 X .375 LONG SEWS. SCREW BRASS	49138-083	1	2	3
17	#10 FLAT WASHER BRASS	47251-008	1	2	3
18	ARC SHIELD ASSEMBLY	42856-001	1	2	3
19	ARC HORN	42029-000	1	2	3
20	.250-20 X 1.31 LONG STUD	66457-015	1	2	3
21	.250-20 X .875 LONG STUD	66457-016	2	4	6
22	#10-24 X .375 LONG HEX HEAD SCREW S.S.	47779-042	1	2	3
23	#10 SPLIT LOCK WASHER	47252-065	1	2	3
24	.250 SPLIT LOCK WASHER	48252-038	1	2	3
25	.250-20 HEX NUT	47253-021	1	2	3
26	.250 FLAT WASHER - BRASS	47251-041	1	2	3
27	.250-20 HEX NUT - BRASS	47254-011	4	8	12
28	#10-32 BRASS HEX NUT	47254-009	1	1	1
29	#10 EXTERNAL LOCKWASHER	47303-006	1	1	1
30	AUXILIARY ASSEMBLY 1 N.O. & 1 N.C. CONTACT (KIT)	68011-003	AS REQUIRED	AS REQUIRED	AS REQUIRED
31	MECHANICAL INTERLOCK ASSEMBLY (1 POLE CONTACTOR) (KIT)	68041-001	AS REQUIRED	AS REQUIRED	AS REQUIRED
31	MECHANICAL INTERLOCK ASSEMBLY (2 & 3 POLE CONTACTOR) (KIT)	68041-002	AS REQUIRED	AS REQUIRED	AS REQUIRED
32	BARBER	68034-001	2		

NOTE: WHEN ORDERING REPAIR PARTS BE SURE TO FURNISH SERIAL NUMBER & TYPE NUMBER WHICH ARE LOCATED ON THE NAMEPLATE. ALSO THE PART NAME & THE PART NUMBER.

RPC-59323-1

REV	DATE	BY	DESCRIPTION
A	5-23-80	TEB	WAS 4729-502 & REMOVED QTY. 1 PER POLE
B	6-10-80	TEB	ADDED INT P/N FOR AUX. & INTERLOCK
C	6-9-97	RR	ITEM 19 WAS P/N 42856-000
D	2-13-98	TU	REMOVED TO COIL, CHGD PER 58. ADDED PER 38
E	5-24-00	RR	AUX 68011 WAS 68040

UNITS	INCHES	MILLIMETERS
1/8"	3.175	8.128
1/4"	6.350	16.254
3/8"	9.525	24.380
1/2"	12.700	32.514
5/8"	15.875	40.640
3/4"	19.050	48.776
7/8"	22.225	56.912
1"	25.400	65.038
1 1/8"	28.575	73.174
1 1/4"	31.750	81.300
1 3/8"	34.925	89.426
1 1/2"	38.100	97.552
1 5/8"	41.275	105.678
1 3/4"	44.450	113.804
1 7/8"	47.625	121.930
2"	50.800	130.056
2 1/8"	53.975	138.182
2 1/4"	57.150	146.308
2 3/8"	60.325	154.434
2 1/2"	63.500	162.560
2 5/8"	66.675	170.686
2 3/4"	69.850	178.812
2 7/8"	73.025	186.938
3"	76.200	195.064
3 1/8"	79.375	203.190
3 1/4"	82.550	211.316
3 3/8"	85.725	219.442
3 1/2"	88.900	227.568
3 5/8"	92.075	235.694
3 3/4"	95.250	243.820
3 7/8"	98.425	251.946
4"	101.600	260.072
4 1/8"	104.775	268.198
4 1/4"	107.950	276.324
4 3/8"	111.125	284.450
4 1/2"	114.300	292.576
4 5/8"	117.475	300.702
4 3/4"	120.650	308.828
4 7/8"	123.825	316.954
5"	127.000	325.080
5 1/8"	130.175	333.206
5 1/4"	133.350	341.332
5 3/8"	136.525	349.458
5 1/2"	139.700	357.584
5 5/8"	142.875	365.710
5 3/4"	146.050	373.836
5 7/8"	149.225	381.962
6"	152.400	390.088
6 1/8"	155.575	398.214
6 1/4"	158.750	406.340
6 3/8"	161.925	414.466
6 1/2"	165.100	422.592
6 5/8"	168.275	430.718
6 3/4"	171.450	438.844
6 7/8"	174.625	446.970
7"	177.800	455.096
7 1/8"	180.975	463.222
7 1/4"	184.150	471.348
7 3/8"	187.325	479.474
7 1/2"	190.500	487.600
7 5/8"	193.675	495.726
7 3/4"	196.850	503.852
7 7/8"	200.025	511.978
8"	203.200	520.104
8 1/8"	206.375	528.230
8 1/4"	209.550	536.356
8 3/8"	212.725	544.482
8 1/2"	215.900	552.608
8 5/8"	219.075	560.734
8 3/4"	222.250	568.860
8 7/8"	225.425	576.986
9"	228.600	585.112
9 1/8"	231.775	593.238
9 1/4"	234.950	601.364
9 3/8"	238.125	609.490
9 1/2"	241.300	617.616
9 5/8"	244.475	625.742
9 3/4"	247.650	633.868
9 7/8"	250.825	641.994
10"	254.000	650.120
10 1/8"	257.175	658.246
10 1/4"	260.350	666.372
10 3/8"	263.525	674.498
10 1/2"	266.700	682.624
10 5/8"	269.875	690.750
10 3/4"	273.050	698.876
10 7/8"	276.225	707.002
11"	279.400	715.128
11 1/8"	282.575	723.254
11 1/4"	285.750	731.380
11 3/8"	288.925	739.506
11 1/2"	292.100	747.632
11 5/8"	295.275	755.758
11 3/4"	298.450	763.884
11 7/8"	301.625	772.010
12"	304.800	780.136
12 1/8"	307.975	788.262
12 1/4"	311.150	796.388
12 3/8"	314.325	804.514
12 1/2"	317.500	812.640
12 5/8"	320.675	820.766
12 3/4"	323.850	828.892
12 7/8"	327.025	837.018
13"	330.200	845.144
13 1/8"	333.375	853.270
13 1/4"	336.550	861.396
13 3/8"	339.725	869.522
13 1/2"	342.900	877.648
13 5/8"	346.075	885.774
13 3/4"	349.250	893.900
13 7/8"	352.425	902.026
14"	355.600	910.152
14 1/8"	358.775	918.278
14 1/4"	361.950	926.404
14 3/8"	365.125	934.530
14 1/2"	368.300	942.656
14 5/8"	371.475	950.782
14 3/4"	374.650	958.908
14 7/8"	377.825	967.034
15"	381.000	975.160
15 1/8"	384.175	983.286
15 1/4"	387.350	991.412
15 3/8"	390.525	999.538
15 1/2"	393.700	1007.664
15 5/8"	396.875	1015.790
15 3/4"	400.050	1023.916
15 7/8"	403.225	1032.042
16"	406.400	1040.168
16 1/8"	409.575	1048.294
16 1/4"	412.750	1056.420
16 3/8"	415.925	1064.546
16 1/2"	419.100	1072.672
16 5/8"	422.275	1080.798
16 3/4"	425.450	1088.924
16 7/8"	428.625	1097.050
17"	431.800	1105.176
17 1/8"	434.975	1113.302
17 1/4"	438.150	1121.428
17 3/8"	441.325	1129.554
17 1/2"	444.500	1137.680
17 5/8"	447.675	1145.806
17 3/4"	450.850	1153.932
17 7/8"	454.025	1162.058
18"	457.200	1170.184
18 1/8"	460.375	1178.310
18 1/4"	463.550	1186.436
18 3/8"	466.725	1194.562
18 1/2"	469.900	1202.688
18 5/8"	473.075	1210.814
18 3/4"	476.250	1218.940
18 7/8"	479.425	1227.066
19"	482.600	1235.192
19 1/8"	485.775	1243.318
19 1/4"	488.950	1251.444
19 3/8"	492.125	1259.570
19 1/2"	495.300	1267.696
19 5/8"	498.475	1275.822
19 3/4"	501.650	1283.948
19 7/8"	504.825	