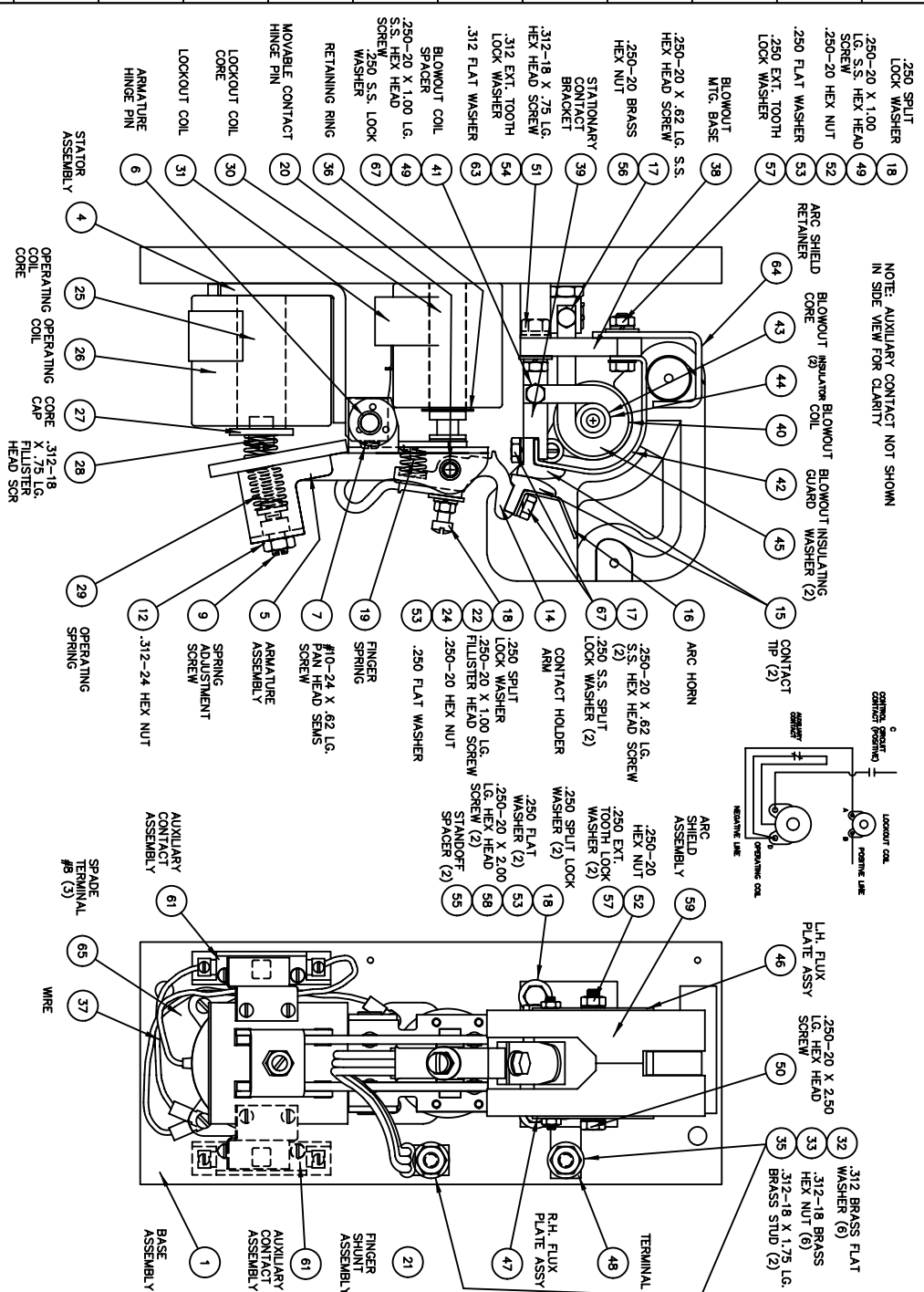


NOTE: WHEN ORDERING REPAIR PARTS BE SURE TO FURNISH SERIAL NUMBER & PART NUMBER WHICH ARE LOCATED ON NAME PLATE. ALSO PART NAME & PART NUMBER.

ITEM	DESCRIPTION	PART NO.	QTY.
1	BASE ASSEMBLY	58866-002	1
2	3/12-18 BRASS WASHER (6)		
3	3/12-18 X 1.75 LG. HEX NUT (6)		
4	STATOR ASSEMBLY	19795-000	1
5	ARMATURE ASSEMBLY	19797-000	1
6	ARMATURE HINGE PIN	58843-001	1
7	#10-24 X .62 LG. PAN HEAD SEMS SCREW	49137-076	1
8	SPRING ADJUSTMENT SCREW	42899-000	1
9	SPRING ADJUSTMENT SCREW		
10			
11			
12	3/12-24 HEX NUT	47253-204	1
13			
14	CONTACT HOLDER ARM	16927-000	1
15	CONTACT TIP	16924-000	2
16	ARC HORN	68056-001	1
17	250-20 X .62 LG. S.S. HEX HEAD SCREW	47279-063	3
18	250 SPLIT LOCK WASHER	47292-038	4
19	FINGER SPRING	16960-000	1
20	MOVABLE CONTACT HINGE PIN	16968-000	1
21	FINGER SHUNT ASSEMBLY	16966-000	1
22	250-20 X 1.00 LG. FILLISTER HEAD SCREW	47244-150	1
23			
24	250-20 HEX NUT	47253-021	1
25	OPERATING COIL CORE	58672-001	1
26	OPERATING COIL	68091-001	1
27	OPERATING CORE CAP	42940-000	1
28	3/12-18 X .75 LG. FILLISTER HEAD SCREW	48624-307	1
29	OPERATING SPRING	19257-000	1
30	LOCKOUT COIL CORE	57658-004	1
31	LOCKOUT COIL	58859-001	1
32	3/12 BRASS FLAT WASHER	47251-012	6
33	3/12-18 BRASS HEX NUT	47254-013	6
34			
35	3/12-18 X 1.75 LG. BRASS STUD	57438-042	2
36	RETAINING RING	57429-024	1
37	14 GA. CL-1251 WIRE 40.8 LONG	821-14-08-14	1
38	BLOWOUT COIL MOUNTING BASE	58667-001	1
39	STATIONARY CONTACT BRACKET	58665-001	1
40	BLOWOUT COIL - 230V	58860-001	1
41	BLOWOUT COIL SPACER	16921-000	1
42	BLOWOUT GUARD	66870-035	1
43	BLOWOUT CORE	66870-035	1
44	BLOWOUT CORE INSULATOR	16962-000	1
45	BLOWOUT COIL INSULATING WASHER	16961-000	2
46	L.H. FLUX PLATE ASSEMBLY	16965-000	1
47	R.H. FLUX PLATE ASSEMBLY	16964-000	1
48	TERMINAL	58861-001	1
49	250-20 X 1.00 LG. S.S. HEX HEAD SCREW	47279-066	2
50	250-20 X 2.50 LG. HEX HEAD SCREW	47246-073	1
51	3/12-18 X .75 LG. HEX HEAD SCREW	47246-079	1
52	250-20 HEX NUT	47253-001	2
53	250 FLAT WASHER	47250-502	4
54	3/12 INTERNAL TOOTH LOCK WASHER	47204-010	1
55	STANDOFF SPACER	57690-000	2
56	250-20 BRASS HEX NUT	47254-011	1
57	250 EXTERNAL TOOTH LOCK WASHER	47203-008	3
58	250-20 X 2.00 LG. HEX HEAD SCREW	47246-071	2



ITEM	DESCRIPTION	PART NO.	QTY.
59	ARC SHIELD ASSEMBLY	16973-000	1
60	AUXILIARY CONTACT ASSEMBLY	68011-004	1
61	3/12 FLAT WASHER	47250-505	1
62	ARC SHIELD RETAINER	68323-001	1
63	SPADE TERMINAL #8	57513-066	3
64	250 S.S. SPLIT LOCK WASHER	47292-238	3

△ SINGLE L.H. AUXILIARY INCLUDED IN COMPLETE CONTACTOR. ORDER ADDITIONAL AUXILIARY'S AS FOLLOWS:
 KIT - SINGLE BLOCK P/N 68011-004
 KIT - DOUBLE BLOCK P/N 68011-005
 PARTS DRG. B-68011 SH11

REVISION	DATE	BY	DESCRIPTION
A			
B			
C			
D			
E			

NUMBER OF SHEETS: 1 OF 1
 DRAWING NO.: RPC-58867-5
 DATE: 11-16-00
 DRG. NO.: DRG. T. JOHNSON CK.
 REF.:
 RENEWAL PARTS BULLETIN 5210
 FIBERGLASS BASE 100 AMP ONE POLE
 NORMALLY CLOSED DC CONTACTOR - SIZE 3
 ALCOA SPECIAL FOR P/N 58867-005