

BRIDGE CRANE LIGHTING



HUBBELL
Industrial Lighting

HBLC LED SERIES BRIDGE CRANE LIGHTING

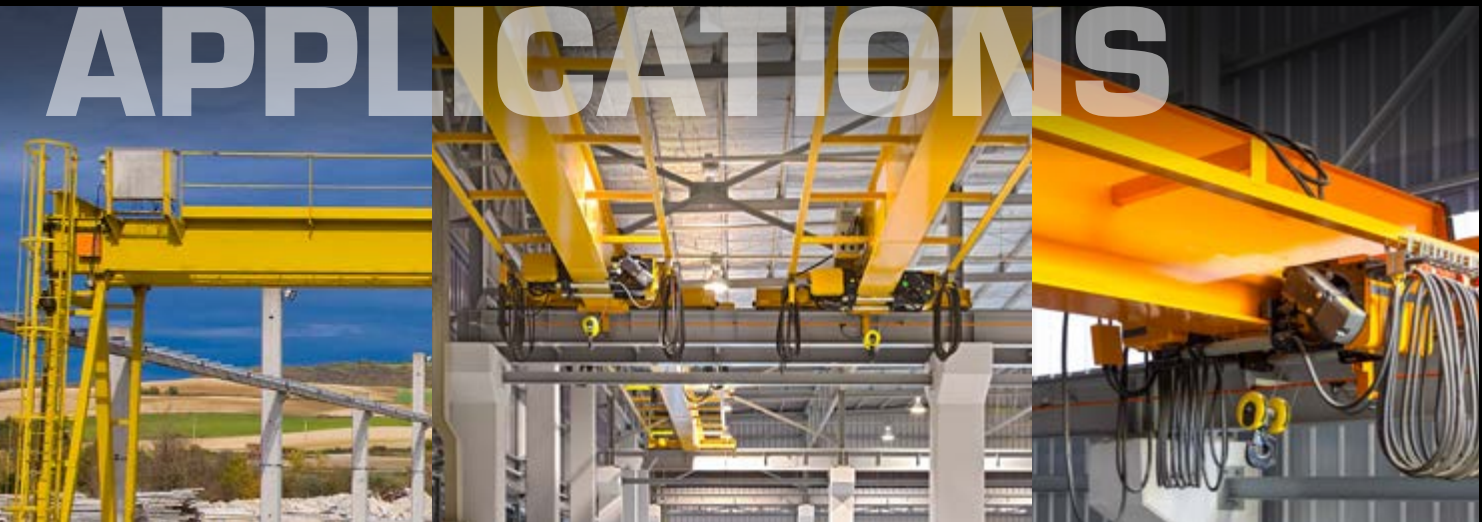


FINALLY A SOLUTION TO BRIDGE CRANE LIGHTING PROBLEMS!

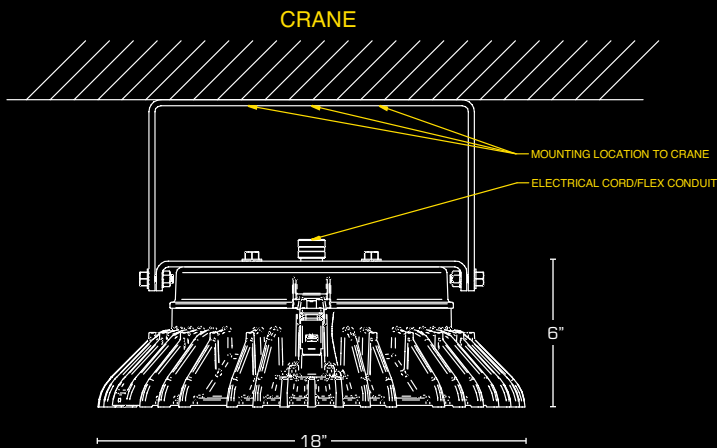


- LED source is resistant to vibration
- Fixture can be powered with:
 - DC power (170 v through 390 v)
 - AC Power (120 v through 277 v)
- Lights area below bridge crane
- Yoke mount for strength and mounting flexibility
- Hinged housing is easy to service
- Rugged die cast construction
- Sealed, wet location rated design
- Vibration tested at 3G in 3 Axis for 100,000 cycles

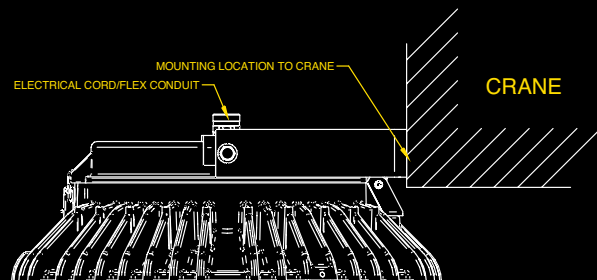
APPLICATIONS



MOUNTING CONFIGURATIONS



HANGING ORIENTATION - ZERO DEGREES



HANGING ORIENTATION - 90 DEGREES