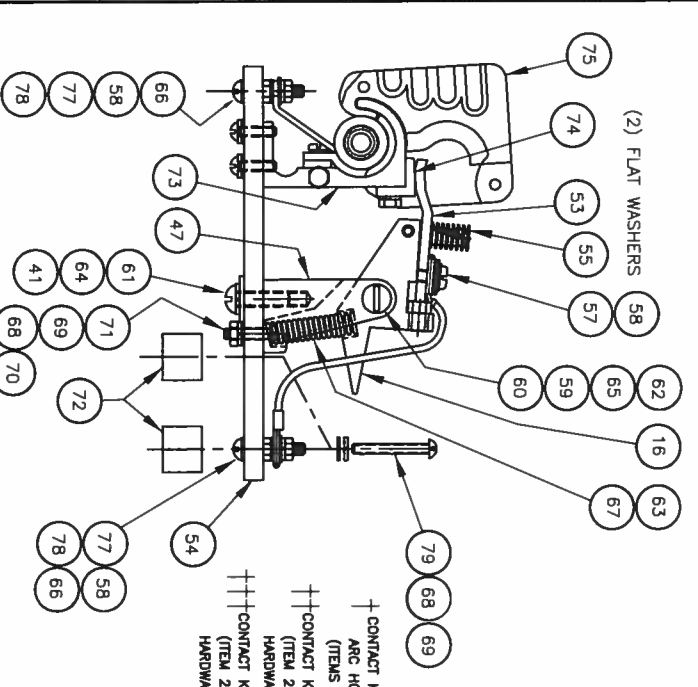
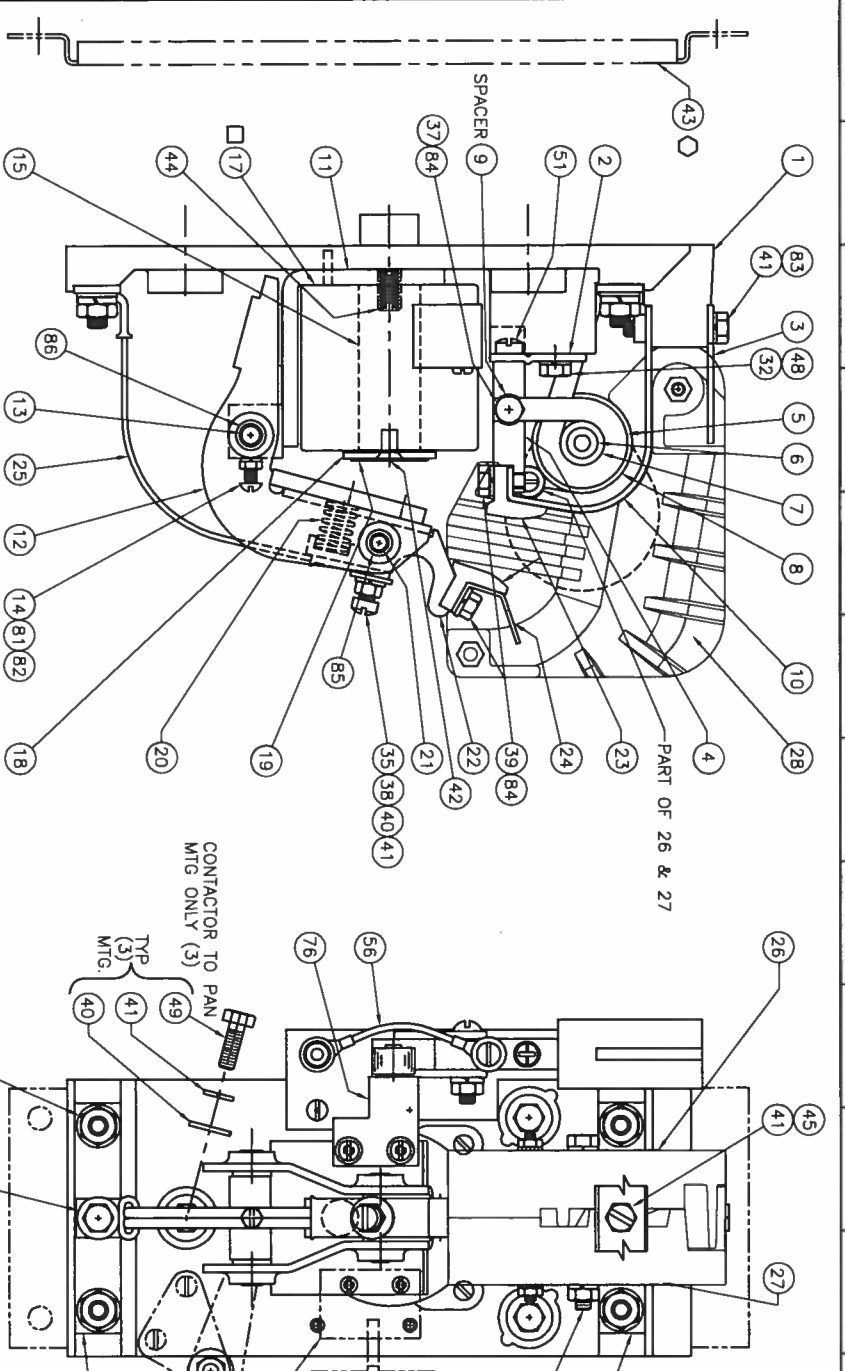


NOTE: WHEN ORDERING PARTS, FURNISH THE FOLLOWING INFORMATION
 1. BULLETIN NUMBER, NEMA SIZE, & SERIAL NUMBER
 2. PART NUMBER & DESCRIPTION

ITEM	DESCRIPTION	QTY	PART NO.
1	BASE	1	67995-002
2	CONTACT SUPPORT BRACKET	1	67999-000
3	ARC SHIELD RETAINER	1	59653-100
4	STATIONARY CONTACT BRACKET	1	58665-002
5	BLOWOUT COIL TERMINAL ASSEMBLY-STD.	1	67998-005
5	BLOWOUT COIL ASSEMBLY - 550 VOLT	1	67998-007
6	BLOWOUT COIL CORE	1	66870-034
7	B.O. CORE INSULATOR	1	17351-000
8	B.O. COIL INSULATOR WASHER	2	16961-000
9	B.O. COIL SPACER	1	16971-001
10	B.O. GUARD	1	68054-002
11	STATOR ASSEMBLY	1	17356-000
12	ARMATURE ASSEMBLY	1	17354-000
13	ARMATURE BEARING PIN	1	58843-000
14	HINGE PIN SCREW 10-24 X 5/8 LG RND HD	1	47241-127
15	STATOR CORE	1	58664-001
16	FINGER SADDLE ASSEMBLY	1	70473-001
17	OPERATING COIL -230/250 VOLTS	1	17359-000
17	OPERATING COIL 115/125 VOLTS	1	17487-000
17	OPERATING COIL 57.5 VOLTS	1	17488-000
18	CORE CAP	1	16940-000
19	NON MAGNETIC SPACER	1	19683-001
20	CONTACT SPRING	1	16960-000
21	CONTACT BEARING PIN	1	16968-000
22	MOVABLE CONTACT HOLDER	1	16927-000
123	CONTACT TIP - STANDARD	2	17279-000
123	CONTACT TIP - SILVER	2	17279-001
123	CONTACT TIP - SILVER TUNGSTEN	2	17279-003
24	ARC HORN	1	68056-001
25	SHUNT ASSEMBLY	1	68000-001
26	FLUX PLATE ASSEMBLY L.H.	1	16965-000
27	FLUX PLATE ASSEMBLY R.H.	1	16964-000
28	ARC SHIELD ASSEMBLY	1	59664-501
29	TERMINAL - BOTTOM	1	67997-002
30	5/16-18 HEX NUT STEEL	4	47253-602
31	5/16 FLAT WASHER STEEL	4	47250-505
32	5/16 SPLIT LOCKWASHER	5	47252-039
33	5/16-18 X 3/4 HEX HD CAP SCREW STEEL	1	47246-079
34	1/4-20 HEX NUT - JAM	1	47253-601
35	1/4-20 HEX NUT - STEEL	1	47253-021
36	1/4-20 X 2-3/4 HEX HD CAP SCREW	1	47246-094
37	1/4-20 X 1 HEX HD CAP SCR STAINLESS	1	47779-066
38	1/4-20 X 7/8 SL FILLISTER HD SCREW	1	47244-149
39	1/4-20 X 5/8 HEX HD CAP SCR. STAINLESS	2	47779-063
40	1/4 FLAT WASHER STEEL	5	47250-502
41	1/4 SPLIT LOCK WASHER	8	47252-038
42	1/4-20 X 1/2 S.S. FLAT HD CAP SCREW	1	49144-108
43	3/8-16 X 1-5/8 LG. STUD - STEEL	1	66475-014
44	1/4-20 X 1/2 HEX HD CAP SCREW	1	68005-001
45	MOUNTING PAN - STEEL	1	47245-061
46	MECHANICAL INTERLOCK ASSEMBLY (KIT)	1	17713-000
47	FINGER SADDLE SUPPORT	1	47246-078
48	5/16-18 X 5/8 HEX HD CAP SCR	4	47246-064
49	1/4-20 X 3/4 HEX HD CAP SCR	2	47303-008
50	1/4 LOCKWASHER - EXTERNAL TOOTH	2	48624-304
51	5/16-18 X 1/2 SL. FILLISTER HD. CAP SCREW	1	59400-001
52	THE BAR KIT (FOR 2 POLE TIED CONTACTORS ONLY)	1	17718-003
53	FINGER	1	68043-000
54	MFG. BASE (N.C. CONTACTOR)	1	17716-000
55	FINGER SPRING	1	09298-000
56	FINGER SHUNT (25 AMP.)	1	47800-128
57	#10-32 X 3/8 LG. R.H. SEMS BRASS	6	47251-008
58	#10 FLAT WASHER BRASS	1	47241-195
59	1/4-20 X 1 LG. RND HD MACH SCR	1	17719-000
60	SEAMLESS STEEL TUBE	1	47241-194
61	1/4-20 X 7/8 LG. RND HD MACH SCR	1	47254-012
62	1/4-20 HEX NUT (BRASS)	1	70951-001
63	SPRING BUMPER (NYLATRON)	1	

THIS DRAWING FILE AND THE DATA THEREIN IS PROPRIETARY AND CONFIDENTIAL. IT IS THE PROPERTY OF GENERAL ELECTRIC COMPANY. IT IS TO BE USED ONLY FOR THE PURPOSES AND IN THE MANNER SPECIFIED BY THE DRAWING. IT IS NOT TO BE REPRODUCED OR TRANSMITTED IN ANY FORM OR BY ANY MEANS, ELECTRONIC OR MECHANICAL, INCLUDING PHOTOCOPYING, RECORDING, OR BY ANY INFORMATION STORAGE AND RETRIEVAL SYSTEM, WITHOUT THE WRITTEN PERMISSION OF GENERAL ELECTRIC COMPANY.



ITEM	DESCRIPTION	QTY	PART NO.
64	1/4" FLAT WASHER (BRASS)	1	47251-041
65	1/4" LOCKWASHER (INTERNAL)	1	47304-009
66	#10-32 X 1" LG. RD. HD. MACH. SCR.	2	47241-155
67	COMPRESSION SPRING	1	17717-000
68	#8 FLAT WASHER (BRASS)	4	47251-007
69	#8 LOCKWASHER	3	47252-064
70	#8-32 HEX NUT	1	47253-014
71	#8-32 X 3/4 LG. RD. HD. MACH. SCR.	1	47241-105
72	PANEL SPACER (BAKELITE)	2	66870-028
73	25 AMP. BLOWOUT ASSEMBLY	1	67246-014
74	CONTACT TIP (STATIONARY)	1	02315-000
75	ARC SHIELD ASSEMBLY	1	42855-000
76	KNOCKER ASSEMBLY	1	70955-003
77	#10-32 HEX NUT	4	47253-017
78	#10 LOCKWASHER (INTERNAL)	2	47304-007
79	#8-32 X 1-1/4 LG. RD. HD. M. SCR.	2	47241-109
80	ADJUSTABLE MECHANICAL INTERLOCK AV.	AS REQ	PER ORDER
81	LOCKWASHER #10 HEAVY SPLIT	1	47252-065
82	NUT, HEX. #10-24	1	47253-016
83	1/4-20 X 1-1/2 HEX. HD. SCREW	1	47246-069
84	1/4 SPLIT LOCK WASHER, STAINLESS STL	3	47252-038
85	HINGE PIN BUSHING	2	16954-000
86	ARMATURE PIN BUSHING	2	16953-000

NOTE: AUXILIARY CONTROL CONTACTS CANNOT BE ADDED TO THIS CONTACTOR ASSEMBLY.
 * MECHANICAL INTERLOCK ASSEMBLY, ITEM 46, IS NOT INCLUDED WITH COMPLETE INTERLOCK ASSEMBLY. MUST BE ORDERED SEPARATELY.
 ** ADJUSTABLE MECHANICAL INTERLOCK ASSEMBLY, ITEM 80 IS NOT INCLUDED WITH COMPLETE CONTACTOR ASSEMBLY. MUST BE ORDERED SEPARATELY.

LINE	DESCRIPTION	POWER
808	230/250	550 V. DC ONLY
806	57.5	STANDARD
805	115/125	
804	230/250	

LINE	DESCRIPTION	REMARKS
J	COMPLETE ASSEMBLY WITH STEEL MOUNTING PAN	
I	COMPLETE ASSEMBLY WITHOUT STEEL MOUNTING PAN	
H	DC OPERATING COIL	
G	SELECT ONE ITEM ONLY (QUANTITIES AS SHOWN)	
F	ITEM 17	

LINE	DESCRIPTION	REMARKS
1	100 AMP SIZE 3 (25 A. SIZE 1 N.C.)	
2	MOLDED BASE DC CONTACTOR	
3	WELDED ARMATURE	

LINE	DESCRIPTION	REMARKS
21	COMPLETE ASSEMBLY WITH STEEL MOUNTING PAN	
20	COMPLETE ASSEMBLY WITHOUT STEEL MOUNTING PAN	
19	DC OPERATING COIL	
18	SELECT ONE ITEM ONLY (QUANTITIES AS SHOWN)	
17	ITEM 17	
16	550 V. DC ONLY	
15	STANDARD	
14	230/250	
13	115/125	
12	57.5	
11	230/250	
10	115/125	
9	57.5	
8	230/250	
7	115/125	
6	57.5	
5	230/250	
4	115/125	
3	57.5	
2	230/250	
1	115/125	

DATE 07/24/12 DRG. NO. RPC-59364-2
 1 OF 1