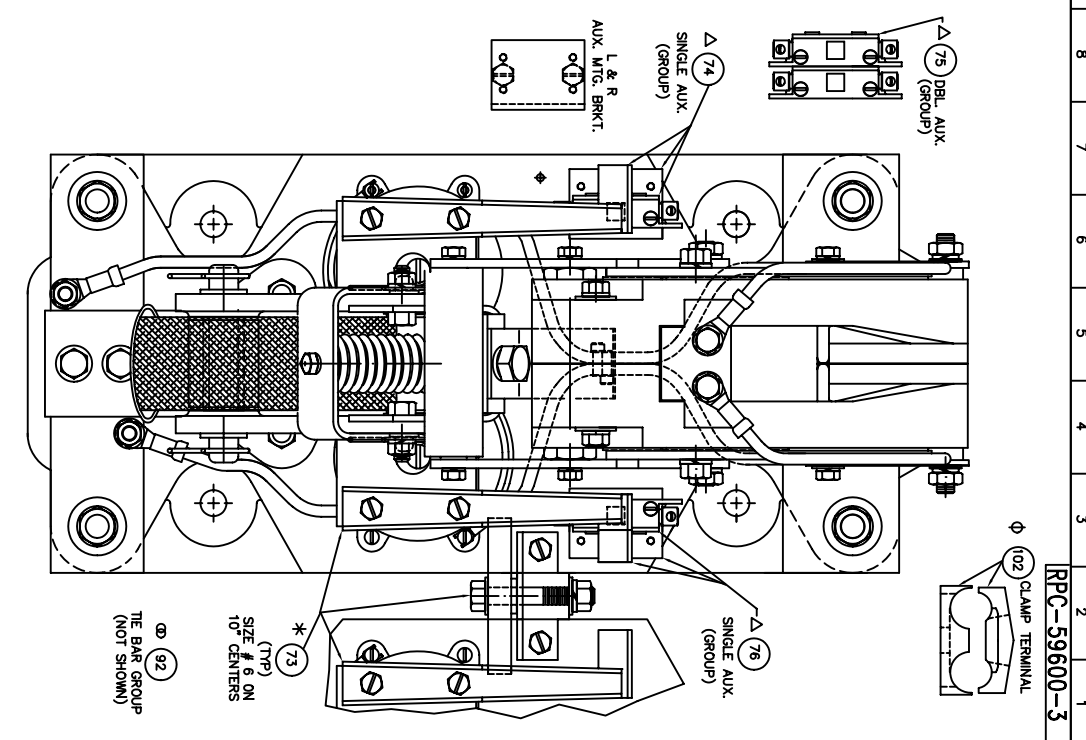


NOTE: WHEN ORDERING REPAIR PARTS BE SURE TO FURNISH SERIAL NUMBER & TYPE NUMBER WHICH ARE LOCATED ON THE NAMEPLATE. ALSO PART NAME AND PART NUMBER.

ITEM	DESCRIPTION	QTY	PART NO.
1	CONTACT TIP	2	SEE CHART
2	SHUNT ASSEMBLY	1	59605-611
3	TERMINAL BUSS	1	59590-602
4	ARMATURE SUPPORT ASSEMBLY	1	59609-001
5	ARMATURE ASSEMBLY	1	59608-620
6	ARMATURE ASSEMBLY	1	59608-620
7	ARMATURE ASSEMBLY	1	59608-620
8	ARMATURE HINGE PIN	1	59649-002
9	CONTACT REST YOKE	1	59607-000
10	SPRING	1	67981-009
11	SPRING RETAINER YOKE	1	59606-000
12	HOLDER ARM HINGE PIN	1	59648-011
13	500-13 X 1.25 LG. S.S. HEX HEAD SCREW	2	47252-042
14	500-13 X 1.00 LG. HEX HEAD SCREW	2	47252-042
15	500 S.S. LOCK WASHER	2	47252-042
16	3/75-16 X 1.00 LG. HEX HEAD SCREW	2	47250-516
17	3/75 S.S. FLAT WASHER	2	47250-295
18	3/75 LOCK WASHER	9	47252-040
19	HEX NUT .375-16	5	47253-603
20	.312-18 X 1.00 LG. S.S. HEX HEAD SCREW	2	47252-039
21	.312-18 X 1.00 LG. S.S. HEX HEAD SCREW	14	47252-039
22	.312-18 HEX NUT	6	47253-602
23	SPRING HUB	1	66857-008
24	.250 LOCK WASHER	3	47252-038
25	.250-20 X .500 LG. SLOTTED HEX HEAD SCREW	1	47245-061
26	BLOWOUT COIL ASSEMBLY	1	59593-601
27	BLOWOUT GUARD	1	59584-800
28	BLOWOUT CORE	1	59589-800
29	BLOWOUT CORE INSULATOR	1	59589-802
30	FLUX PLATE ASSEMBLY - LEFT HAND	2	59587-000
31	FLUX PLATE ASSEMBLY - RIGHT HAND	1	59586-001
32	SUPPORT PLATFORM	1	59585-002
33	SUPPORT PLATFORM	1	59585-000
34	SUPPORT SPACER	2	66870-041
35	.375-16 X .75 LG. HEX HEAD SCREW	2	47246-101
36	.250-20 HEX NUT	2	47253-021
37	.250-20 X .62 LG. FLAT HEAD SCREW	2	47250-502
38	.250-20 X .50 LG. BRASS FLAT HEAD SCREW	2	47245-108
39	STARTER PLATE	1	59610-000
40	COIL CORE	2	67282-000
41	COIL CORE CAP SPACER	2	41791-000
42	COIL CORE CAP	2	41763-000
43	.312-18 X .75 LG. HEX HEAD SCREW	2	47246-079
44	OPERATING COIL (SEE CHART)	1	58441-069
45	NAMEPLATE (NOT SHOWN)	2	59597-000
46	ARMATURE STOP SUPPORT RAIL	2	57439-050
47	ARMATURE STOP SUPPORT RAIL	2	57439-050
48	.250-20 X .75 LG. BRASS STUD	2	48497-001
49	INSULATOR 1 X 1 (.250-20)	1	59589-000
50	ARMATURE STOP	1	59614-000
51	ANTI BOUNCE SLEEVE	1	59614-000
52	ANTI BOUNCE WEIGHT	1	59615-000
53	.312-18 X .62 LG. HEA HEAD SCREW	2	47246-078
54	.312-18 X 5.25 LG. STUD	1	66475-025
55	.250-20 X .500 S.S. HEX HEAD SCREW	2	47779-061

56	.250 S.S. LOCK WASHER	2	47252-238
57	.312-18 S.S. HEX NUT	2	47796-103
58	BRACKET	2	59580-000
59	LINK	2	59579-000
60	SPACER-TOP	2	59578-000
61	SPACER-BOTTOM	2	59577-000
62	.312-18 X 3.75 LG. BRASS STUD	2	57438-047
63	.312-18 X 5.25 LG. BRASS STUD	1	57439-049
64	.312 BRASS FLAT WASHER	8	47251-012
65	.312-18 BRASS HEX NUT	6	47246-013
66	.312-18 X 3.75 LG. HEX HEAD SCREW	6	47246-055
67	.312-18 HEX NUT	1	47301-013
68	.500-13 X 2.75 LG. HEX HEAD SCREW	4	47250-516
69	.500 FLAT WASHER	4	47252-042
70	.500-13 FULL HEX NUT	4	47253-505
71	MOLDED BASE ASSEMBLY	4	59579-601
72	MOLDED BASE ASSEMBLY	4	59579-601
73	MECHANICAL INTERLOCK ASSEMBLY(SIZE 6 ONLY)	1	59625-009
74	PULNGER AUXILIARY (SINGLE L.H.) GROUP	59620-006	59620-006
75	PULNGER AUXILIARY (DOUBLE L.H.) GROUP	59620-106	59620-106
76	PULNGER AUXILIARY (SINGLE R.H.) GROUP	59620-186	59620-186
77	PULNGER AUXILIARY (DOUBLE R.H.) GROUP	59620-186	59620-186
78	COMPLETE ARC SHIELD & ARC TRANSFER ASSEMBLY	4	47246-092
79	.312-18 X 1.25 LG. HEX HEAD SCREW	2	47246-106
80	.375-16 X 1.75 LG. HEX HEAD SCREW	1	47246-117
81	.375-16 X 4.00 LG. HEX HEAD SCREW	2	47246-514
82	.375-16 X 4.50 LG. HEX HEAD SCREW	2	47246-514
83	.500-13 X 1.50 LG. S.S. HEX HEAD SCREW	2	47779-110
84	.720 EXTERNAL TOOTH RETAINING RING	9	57429-026
85	.875 EXTERNAL TOOTH RETAINING RING	2	57429-027
86	BASE	1	59576-003
87	SPACER (QTY. 4) OR AS REQUIRED	1	66870-040
88	ARC TRANSFER	2	59662-200
89	HAIR PIN CUTTER	2	57403-005
90	HAIR PIN CUTTER	2	57403-006
91	.312 S.S. LOCK WASHER	4	47252-239
92	THE BAR GROUP SIZE 6 ONLY (NOT SHOWN)	1	59400-026
93	INVOCLIP (NOT SHOWN)	4	57364-003
94	CRIMP TERMINAL	4	57513-062
95	.#8 X .50 LG. PAN HEAD TYPE A8 SCREW (NOT SHOWN)	4	47906-020
96	HEAD WIRE #8 X L=33, R=31,50 LG.	5,36	82111-30008
97	.375 FLAT WASHER	1	57513-066
98	CRIMP TERMINAL	2	57513-066
99	CONTROL WIRE #14 X 9.25 LG.	1,77	821141084
100	.312-18 X .50 LG. SS HEX HEAD SCREW	2	47779-077
101	ARC SHIELD SPACER	2	67988-006
102	CLAMP TERMINAL (QTY. 4) OR AS REQUIRED	2	57300-058
103			
104			
105			



NOTES: * Δ ● ⊕ ⊙ (NOT INCLUDED WITH COMPLETE CONTACTOR ASSEMBLY).

* ITEM 73 MECHANICAL INTERLOCK ASSEMBLY PART NO. 59625-006 (ORDERED SEPARATELY).

Δ ITEM 74,75,76,77 PULNGER AUXILIARY GROUP (INCLUDING KNOCKER, BRACKET, AND MTG. HARDWARE) (ORDERED SEPARATELY).

● ITEM 73A SPECIAL INTERLOCK BAR ASSEMBLY. USED ONLY WHEN CONTACTORS ARE SPACED AT 11.00\"/>

ITEM	DESCRIPTION	QTY	PART NO.
1	COMPLETE DC CONTROL ASSEMBLY (COILS IN SERIES)	1	59600-000
2	DC OPERATING COILS (2)	111	230 / 280V
3	VOLTS	112	115 / 125V
4	COIL PART NO.	113	57.5V
5	OHMS	114	80V
6	OHMS	115	36V
7	OHMS	116	460 / 550V
8	OHMS	117	230 / 250V
9	OHMS	118	115 / 125V
10	OHMS	119	230 / 250V
11	OHMS	120	115 / 125V
12	OHMS	121	230 / 250V
13	OHMS	122	115 / 125V
14	OHMS	123	230 / 250V
15	OHMS	124	115 / 125V
16	OHMS	125	230 / 250V
17	OHMS	126	115 / 125V
18	OHMS	127	230 / 250V
19	OHMS	128	115 / 125V
20	OHMS	129	230 / 250V
21	OHMS	130	115 / 125V

ITEM	DESCRIPTION	QTY	PART NO.
1	REPAIR PARTS BULLETIN 5210	1	MOULDED BASE FRONT REMOVABLE
2	600 AMP, 1 POLE, N.O., DC CONTACTOR, SIZE 6	1	

DRG. NO. RPC-59600-3

2 OF 2