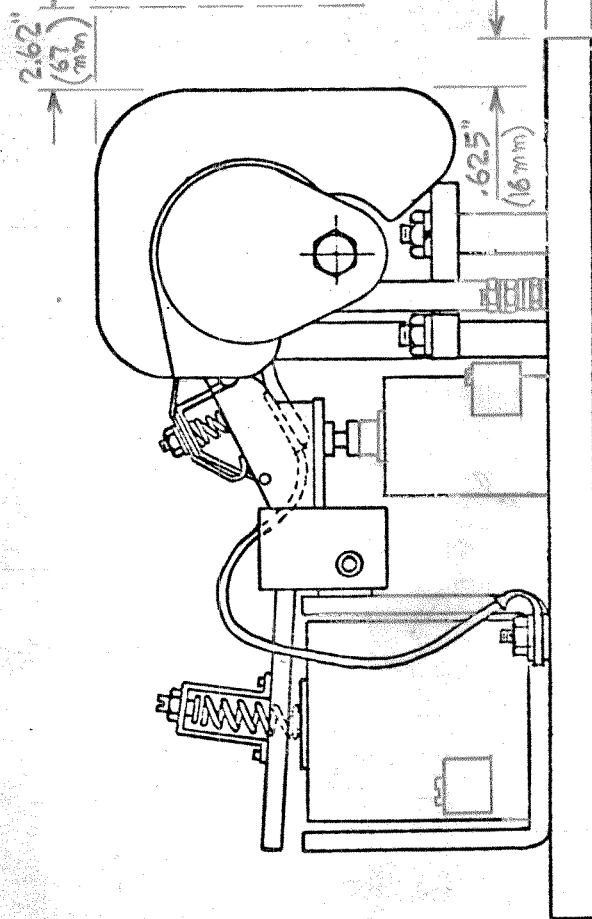


CLEARANCE FOR REMOVING ARC SHIELD

8.5" (216mm)

1.00" (25.4mm)



AUXILIARY CONTACTS SUPPLIED PER ORDER

E			
D			
C			
B			
A			
REV.	DATE	BY	DESCRIPTION

LINEAR		HOLES		ANGLES
DECIMAL	1 PLACE ± .050	PUNCH	± .002	DIMEN. ± 1°
	2 PLACE ± .020	.5 OR LESS	+ .004 - .002	
	3 PLACE ± .005	DRILL	OVER .5	+ .010 - .004
		REAM-SPECIFIED		

BULL. 5210 FIBERGLASS PANEL  
 OUTLINE DIMENSIONS FOR 300A. & 400A.  
 1-POLE DC SPRING CLOSED FRONT  
 REMOVABLE CONTACTOR-SIZE 5 & 5A

R.M.S. | DATE 12-13-79 | DR. DON. K | CK. 09/89 | APPR. | REF.

Industrial Controls Division  
 HARVEY HUBBELL INCORPORATED  
 Madison, Ohio 44057

DRG. NO. A-59517  
 OF

A-59517