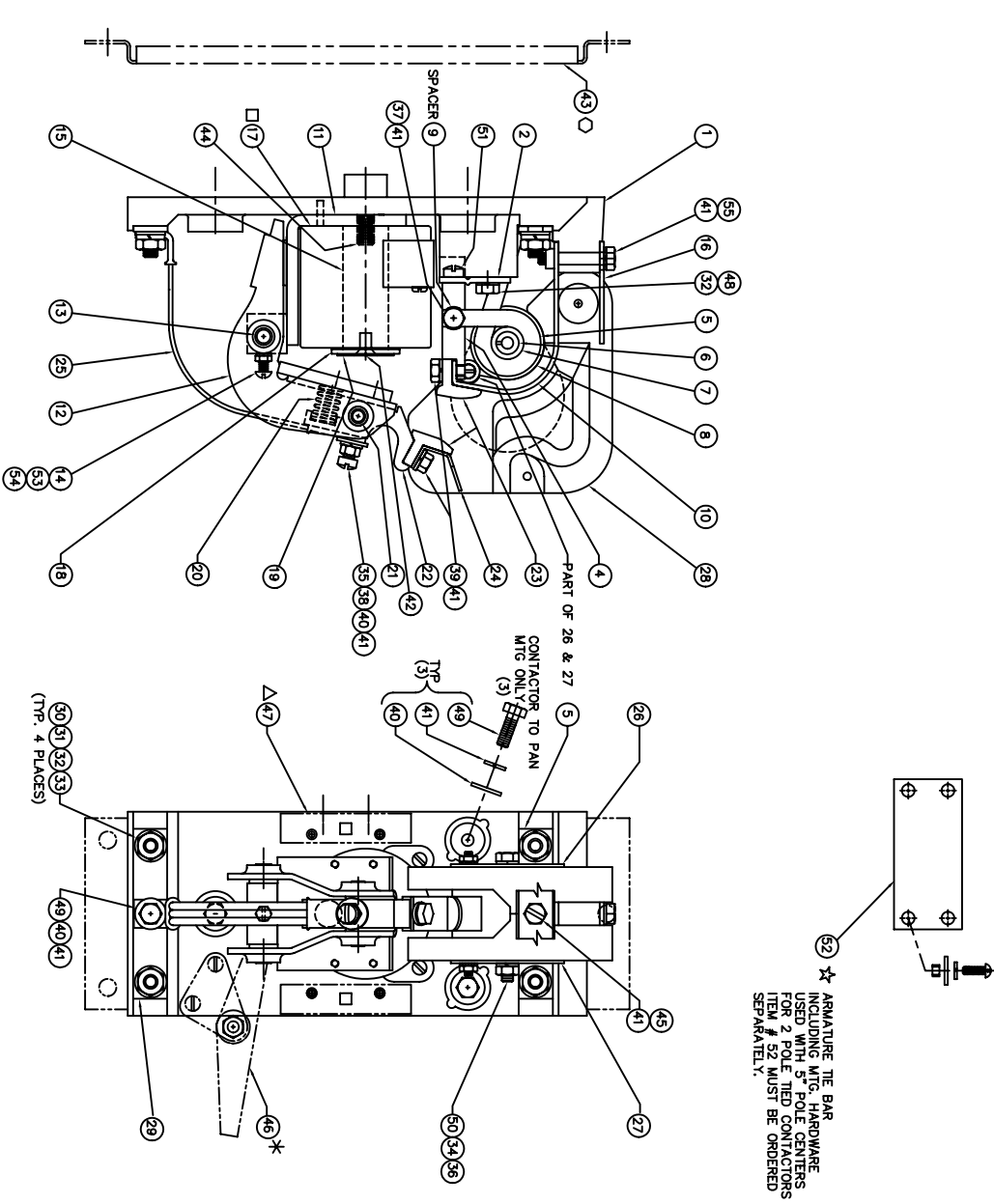


NOTE: WHEN ORDERING PARTS, FURNISH THE FOLLOWING INFORMATION
 1. BULLETIN NUMBER, NEMA SIZE, & SERIAL NUMBER
 2. PART NUMBER & DESCRIPTION



☆ ARMATURE THE BAR INCLUDING MFG. HARDWARE USED WITH 5 POLE CENTERS FOR 2 Poles MUST BE ORDERED SEPARATELY.

ITEM	DESCRIPTION	QTY	PART NO. SINGLE POLE
1	BASE	1	67995-002
2	CONTACT SUPPORT BRACKET	1	67999
3	STATIONARY CONTACT BRACKET	1	58665-002
4	BLOWOUT COIL ASSEMBLY - STD.	1	67998-006
5	BLOWOUT COIL ASSEMBLY - 550 VOLT	1	67998-008
6	BLOWOUT COIL ASSEMBLY - 550 VOLT	1	67998-012
7	BLOWOUT COIL CORE (SLOTTED)	1	17349
8	B.O. COIL INSULATOR	1	17351
9	B.O. COIL INSULATOR WASHER	2	16961
10	B.O. COIL SPACER	1	16971
11	B.O. GUARD	1	68054-002
12	STATOR ASSEMBLY	1	17356
13	ARMATURE ASSEMBLY	1	17354
14	ARMATURE BEARING PIN	1	58843
15	HINGE PIN SCREW 10-24 X 5/8 LG RND HD	1	47241-127
16	ARC SHIELD RETAINER	1	59664-001
17	OPERATING COIL - 230/250 VOLTS	1	59663-100
18	OPERATING COIL - 115/125 VOLTS	1	17359
19	OPERATING COIL 57.5 VOLTS	1	17488
20	CORE CAP	1	16940
21	NON MAGNETIC SPACER	1	19683-001
22	CONTACT SPRING	1	16960
23	CONTACT BEARING PIN	1	16968
24	MOVABLE CONTACT HOLDER	1	16927
25	CONTACT TIP - STANDARD	2	17279
26	CONTACT TIP - SILVER	2	17278
27	ARC HORN	1	68006-001
28	SHUNT ASSEMBLY	1	68000-002
29	FLUX PLATE ASSEMBLY L.H.	1	16965
30	FLUX PLATE ASSEMBLY R.H.	1	16964
31	ARC SHIELD ASSEMBLY	1	16893-000
32	TERMINAL - BOTTOM	1	67997-002
33	5/16-18 HEX NUT STEEL	4	47253-002
34	5/16-18 FLAT WASHER STEEL	4	47252-009
35	5/16-18 X 3/4 HEX HD CAP SCR	4	47246-079
36	1/4-20 HEX NUT - JAM	4	47253-001
37	1/4-20 HEX NUT - STEEL	1	47253-021
38	1/4-20 X 2-3/4 HEX HD CAP SCREW	1	47246-066
39	1/4-20 X 7/8 ST. FILLISTER HD SCREW	1	47779-066
40	1/4-20 X 5/8 HEX HD CAP SCR. STAINLESS	2	47779-063
41	1/4 FLAT WASHER STEEL	5	47250-002
42	1/4 SPLIT LOCK WASHER	10	47252-038
43	1/4-20 X 1/2 FLAT HD SCREW - BRASS	1	47265-108
44	1/4-20 X 1/2 FLAT HD SCREW - STEEL	1	68005-001
45	3/8-16 X 1-9/8 LG. STUD - STEEL	1	68478-014
46	1/4-20 X 1/2 HEX HD CAP SCREW SLOTTED	1	47246-081
47	MECHANICAL INTERLOCK ASSEMBLY (KIT)	1	PER ORDER
48	AUX. ASSEM. (N.O. & N.C. CONTACTS) (KIT)	1	AS REQUIRED
49	5/16-18 X 5/8 HEX HD CAP SCR	1	47246-078
50	1/4-20 X 3/4 HEX HD CAP SCR	4	47246-064
51	1/4-20 X 3/4 HEX HD CAP SCR	2	47203-008
52	5/16-18 X 1/2 SL. FILLISTER HD. CAP SCREW	1	48624-304
53	THE BAR KIT (FOR 2 POLE TIED CONTACTORS ONLY)	1	59400-001
54	#10 LOCKWASHER - HEAVY SPLIT	1	47252-065
55	1/4-20 X 1-1/2 HEX HD CAP SCREW	1	47246-089

- △ AUXILIARY CONTROL CONTACT ASSEMBLY (INCLUDING KNOCKER) P/N 68011-001 SINGLE BLOCK UNIT P/N 68011-002 DOUBLE BLOCK UNIT. TO BE ORDERED SEPARATELY. AUXILIARY CONTROL CONTACT ASSEMBLY IS NOT INCLUDED IN COMPLETE CONTACTOR ASSEMBLY.
- SELECT ONE ITEM ONLY (QUANTITIES AS SHOWN)
- * INTERLOCK BAR ASSEMBLY P/N 68041-003 TO BE ORDERED SEPARATELY. REFER TO REPAIR PARTS PRINT A-58671 INTERLOCK BAR ASSEMBLY IS NOT INCLUDED WITH COMPLETE CONTACTOR ASSEMBLY.
- WELDED BLOWOUT ASSEMBLY INCLUDES ITEMS 4, 5, 9, 37, & 41.

ITEM	DESCRIPTION	QTY	PART NO. SINGLE POLE
605	SHOCK RESISTANT WELDED BLOWOUT ASSEMBLY ●	57.5	
603	SHOCK RESISTANT WELDED & SILVER FACED CONTACTS D	115/125	
601	SHOCK RESISTANT WELDED & SILVER FACED CONTACTS D	230/250	
405	SHOCK RESISTANT WELDED BLOWOUT ASSEMBLY ●	57.5	
403	SHOCK RESISTANT WELDED & SILVER FACED CONTACTS D	115/125	
401	SHOCK RESISTANT WELDED & SILVER FACED CONTACTS D	230/250	
303	SILVER FACED CONTACTS	57.5	
302	SILVER FACED CONTACTS	115/125	
301	SILVER FACED CONTACTS	230/250	
503	POWER LINE VOLTAGE	57.5	
502	POWER LINE VOLTAGE	115/125	
501	POWER LINE VOLTAGE	230/250	
005	STANDARD	57.5	
003	STANDARD	115/125	
001	STANDARD	230/250	

REV	DATE	BY	DESCRIPTION	REV	DATE	BY	DESCRIPTION
J				E			
I				D			
H				C			
G				B	5-24-00	RML	AUX #88011 WAS 68040
F				A	11-14-95	RML	REWORK & REV PER ECM 5210-272

LINE	NO.	REV.	DATE	BY	DESCRIPTION
01X	1	1	12/08/95	DRG.	NO. 150 AMP (SIZE 4) DC OPERATOR MOUNTED BASE AC CONTACTOR WELDED ARMATURE
01Y	1	1	12/08/95	DRG.	NO. 150 AMP (SIZE 4) DC OPERATOR MOUNTED BASE AC CONTACTOR WELDED ARMATURE
01Z	1	1	12/08/95	DRG.	NO. 150 AMP (SIZE 4) DC OPERATOR MOUNTED BASE AC CONTACTOR WELDED ARMATURE