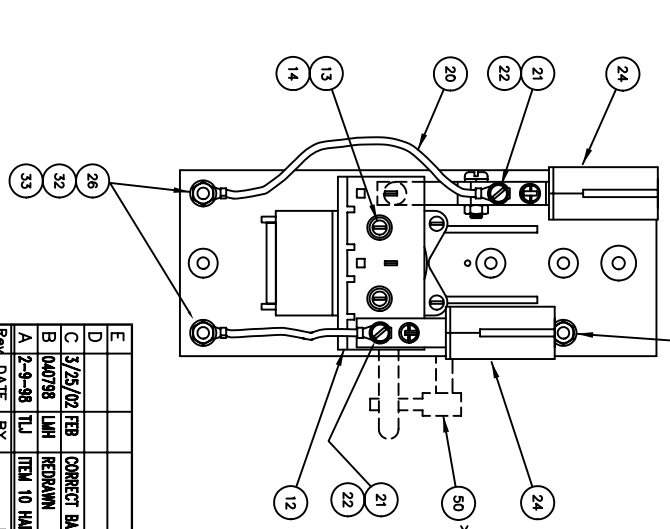
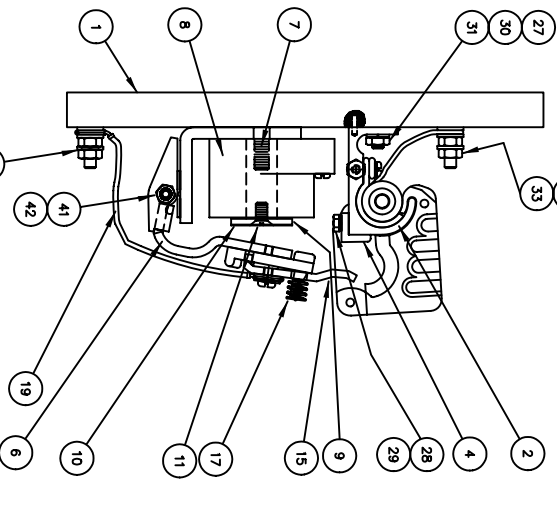
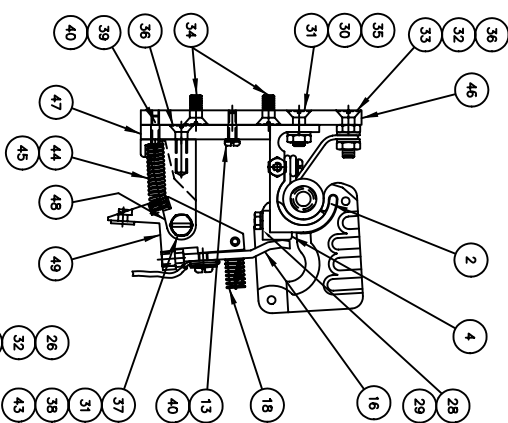


ITEM	DESCRIPTION	PART NO.	QTY.
46	STATIONARY MOUNTING BASE	59508-000	1
47	PIVOT MOUNTING BASE	59508-001	1
48	FINGER SADDLE SUPPORT	17713-000	1
49	FINGER SADDLE ASSEMBLY	70473-002	1
50	MECHANICAL INTERLOCK ASSEMBLY (2 POLE CONTACTOR) (KIT)	68041-002	1

REPAIR PARTS DRAWING FOR NO/NC (#1 SIZE) MAGNETIC CONTACTOR  
 NOTE: WHEN ORDERING REPAIR PARTS BE SURE TO FURNISH SERIAL NUMBER AND TYPE NUMBER WHICH ARE LOCATED ON THE NAMEPLATE. ALSO THE PART NAME AND PART NUMBER.

ITEM	DESCRIPTION	PART NO.	QTY.
1	BASE	68013-003	1
2	SIZE 1 UPRIGHT, CU CONTACT & BLOWOUT COIL ASSEMBLY (25 AMP)	58851-101	2
2	SIZE 1 UPRIGHT, CU CONTACT & BLOWOUT COIL ASSEMBLY (5 AMP)	58851-102	2
2	SIZE 1 UPRIGHT, CU CONTACT & BLOWOUT COIL ASSEMBLY (10 AMP)	58851-103	2
2	SIZE 1 UPRIGHT, CU CONTACT & BLOWOUT COIL ASSEMBLY (15 AMP)	58851-104	2
2	SIZE 1 UPRIGHT, AG CONTACT & BLOWOUT COIL ASSEMBLY (25 AMP)	58851-106	2
2	SIZE 1 UPRIGHT, AG CONTACT & BLOWOUT COIL ASSEMBLY (5 AMP)	58851-107	2
2	SIZE 1 UPRIGHT, AG CONTACT & BLOWOUT COIL ASSEMBLY (10 AMP)	58851-108	2
2	SIZE 1 UPRIGHT, AG CONTACT & BLOWOUT COIL ASSEMBLY (15 AMP)	58851-109	2
4	SIZE 1 STATIONARY CONTACT (COPPER)	02315-000	2
4	SIZE 1 STATIONARY CONTACT (SILVER)	02315-001	2
6	ARMATURE-STATOR, HINGE PIN, & CORE ASSEMBLY	56675-003	1
7	312-18 X 1.250 LONG STUD	66475-017	1
7	COIL (115/125V D.C.)	68014-002	1
8	COIL (230/275V D.C.)	68014-008	1
8	COIL (57.5V D.C.)	68014-003	1
9	CORE CAP	18048-000	1
10	NONMAGNETIC SPACER	19683-001	1
11	250-20 X .500 LONG FLAT HEAD SCREW BRASS	47665-108	1
12	FINGER BOARD	42005-000	1
13	#8-32 X .625 LONG ROUND HEAD SCREW	47241-104	3
14	#8 SPLIT LOCK WASHER	47252-064	2
15	MOVABLE FINGER SIZE 1 (COPPER)	05721-000	1
15	MOVABLE FINGER SIZE 1 (SILVER)	05721-001	1
16	MOVABLE FINGER SIZE 1 (COPPER)	17718-003	1
16	MOVABLE FINGER SIZE 1 (SILVER)	17718-008	1
17	FINGER SPRING	04657-000	1
18	FINGER SHUNT	17716-000	1
19	FINGER SHUNT	04870-001	1
20	FINGER SHUNT	04870-002	1
21	#10-32 X .375 LONG SEMS. SCREW BRASS	49138-083	2
22	#10 FLAT WASHER BRASS	47251-008	2
24	ARC SHIELD ASSEMBLY SIZE 1	42855-001	2
26	250-20 X 1.31 LONG STUD	66457-015	3
27	250-20 X .875 LONG STUD	66457-016	1
28	#10-24 X .375 LONG HEX HEAD SCREW S.S.	47779-042	2
29	#10 SPLIT LOCK WASHER	47252-065	2
30	250 SPLIT LOCK WASHER	48252-038	2
31	250-20 HEX NUT STEEL	47253-021	3
32	250 FLAT WASHER - BRASS	47251-041	11
33	250-20 HEX NUT - BRASS	47244-011	2
34	250-20 X .625 FLAT HEAD SCREW	47240-168	8
35	250-20 X .750 FLAT HEAD SCREW	47240-169	1
36	250-20 X .875 FLAT HEAD SCREW	47240-170	2
37	250-20 X 1.000 ROUND HEAD SCREW	47241-195	1
38	250 EXTERNAL LOCKWASHER	47204-009	1
39	#8-32 X .750 ROUND HEAD SCREW	47241-105	1
40	#8 INTERNAL LOCKWASHER	47304-006	2
41	#10 EXTERNAL WASHER	47303-006	1
42	#10-32 BRASS HEX NUT	47254-009	1
43	SEAMLESS STEEL TUBE	17719-000	1
44	COMPRESSION RETURN SPRING	17717-000	1
45	SPRING DAMPENER (BUMPER)	70951-001	1

NOTE: AUXILIARY CONTROL CONTACTS CAN NOT BE ADDED TO THIS CONTACTOR ASSEMBLY.  
 \* MECHANICAL INTERLOCK ASSEMBLY ITEM #50 IS NOT INCLUDED WITH COMPLETE CONTACTOR ASSEMBLY. MUST BE ORDERED SEPARATELY.



□ SELECT ONE ITEM ONLY (QUANTITIES AS SHOWN)  
 † THESE ITEMS ARE INCLUDED IN THE UPRIGHT, CONTACT & BLOWOUT ASSEMBLY, ITEM 2

ITEM	DESCRIPTION	PART NO.	QTY.
1	BASE	68013-003	1
2	SIZE 1 UPRIGHT, CU CONTACT & BLOWOUT COIL ASSEMBLY (25 AMP)	58851-101	2
2	SIZE 1 UPRIGHT, CU CONTACT & BLOWOUT COIL ASSEMBLY (5 AMP)	58851-102	2
2	SIZE 1 UPRIGHT, CU CONTACT & BLOWOUT COIL ASSEMBLY (10 AMP)	58851-103	2
2	SIZE 1 UPRIGHT, CU CONTACT & BLOWOUT COIL ASSEMBLY (15 AMP)	58851-104	2
2	SIZE 1 UPRIGHT, AG CONTACT & BLOWOUT COIL ASSEMBLY (25 AMP)	58851-106	2
2	SIZE 1 UPRIGHT, AG CONTACT & BLOWOUT COIL ASSEMBLY (5 AMP)	58851-107	2
2	SIZE 1 UPRIGHT, AG CONTACT & BLOWOUT COIL ASSEMBLY (10 AMP)	58851-108	2
2	SIZE 1 UPRIGHT, AG CONTACT & BLOWOUT COIL ASSEMBLY (15 AMP)	58851-109	2
4	SIZE 1 STATIONARY CONTACT (COPPER)	02315-000	2
4	SIZE 1 STATIONARY CONTACT (SILVER)	02315-001	2
6	ARMATURE-STATOR, HINGE PIN, & CORE ASSEMBLY	56675-003	1
7	312-18 X 1.250 LONG STUD	66475-017	1
7	COIL (115/125V D.C.)	68014-002	1
8	COIL (230/275V D.C.)	68014-008	1
8	COIL (57.5V D.C.)	68014-003	1
9	CORE CAP	18048-000	1
10	NONMAGNETIC SPACER	19683-001	1
11	250-20 X .500 LONG FLAT HEAD SCREW BRASS	47665-108	1
12	FINGER BOARD	42005-000	1
13	#8-32 X .625 LONG ROUND HEAD SCREW	47241-104	3
14	#8 SPLIT LOCK WASHER	47252-064	2
15	MOVABLE FINGER SIZE 1 (COPPER)	05721-000	1
15	MOVABLE FINGER SIZE 1 (SILVER)	05721-001	1
16	MOVABLE FINGER SIZE 1 (COPPER)	17718-003	1
16	MOVABLE FINGER SIZE 1 (SILVER)	17718-008	1
17	FINGER SPRING	04657-000	1
18	FINGER SHUNT	17716-000	1
19	FINGER SHUNT	04870-001	1
20	FINGER SHUNT	04870-002	1
21	#10-32 X .375 LONG SEMS. SCREW BRASS	49138-083	2
22	#10 FLAT WASHER BRASS	47251-008	2
24	ARC SHIELD ASSEMBLY SIZE 1	42855-001	2
26	250-20 X 1.31 LONG STUD	66457-015	3
27	250-20 X .875 LONG STUD	66457-016	1
28	#10-24 X .375 LONG HEX HEAD SCREW S.S.	47779-042	2
29	#10 SPLIT LOCK WASHER	47252-065	2
30	250 SPLIT LOCK WASHER	48252-038	2
31	250-20 HEX NUT STEEL	47253-021	3
32	250 FLAT WASHER - BRASS	47251-041	11
33	250-20 HEX NUT - BRASS	47244-011	2
34	250-20 X .625 FLAT HEAD SCREW	47240-168	8
35	250-20 X .750 FLAT HEAD SCREW	47240-169	1
36	250-20 X .875 FLAT HEAD SCREW	47240-170	2
37	250-20 X 1.000 ROUND HEAD SCREW	47241-195	1
38	250 EXTERNAL LOCKWASHER	47204-009	1
39	#8-32 X .750 ROUND HEAD SCREW	47241-105	1
40	#8 INTERNAL LOCKWASHER	47304-006	2
41	#10 EXTERNAL WASHER	47303-006	1
42	#10-32 BRASS HEX NUT	47254-009	1
43	SEAMLESS STEEL TUBE	17719-000	1
44	COMPRESSION RETURN SPRING	17717-000	1
45	SPRING DAMPENER (BUMPER)	70951-001	1

REV	DATE	BY	DESCRIPTION
A	2-9-98	TJL	ITEM 10 HAD WRONG P/N
B	04/07/98	LHM	REWORK
C	3/25/02	FEB	CORRECT BALLBOON #24, ADD TL 16
D	01/25/02	FEB	
E	01/25/02	FEB	

QUANTITIES AS SHOWN  
 OLY 4-1008 1.50 1.00  
 OLYX 4-1008 1.50 1.00  
 CADD NO. 58315001  
 DATE 8-23-95  
 DR. D. LEVINE CK.  
 BULL 5210 REPAIR PARTS FOR SIZE #1  
 SPECIAL 2 POLE 25A N.O. 25A N.C. MAX  
 BOLDED BASE D.C. CONTACTOR  
 DRG. NO. 1 OF 1  
**RPC-59315-1**