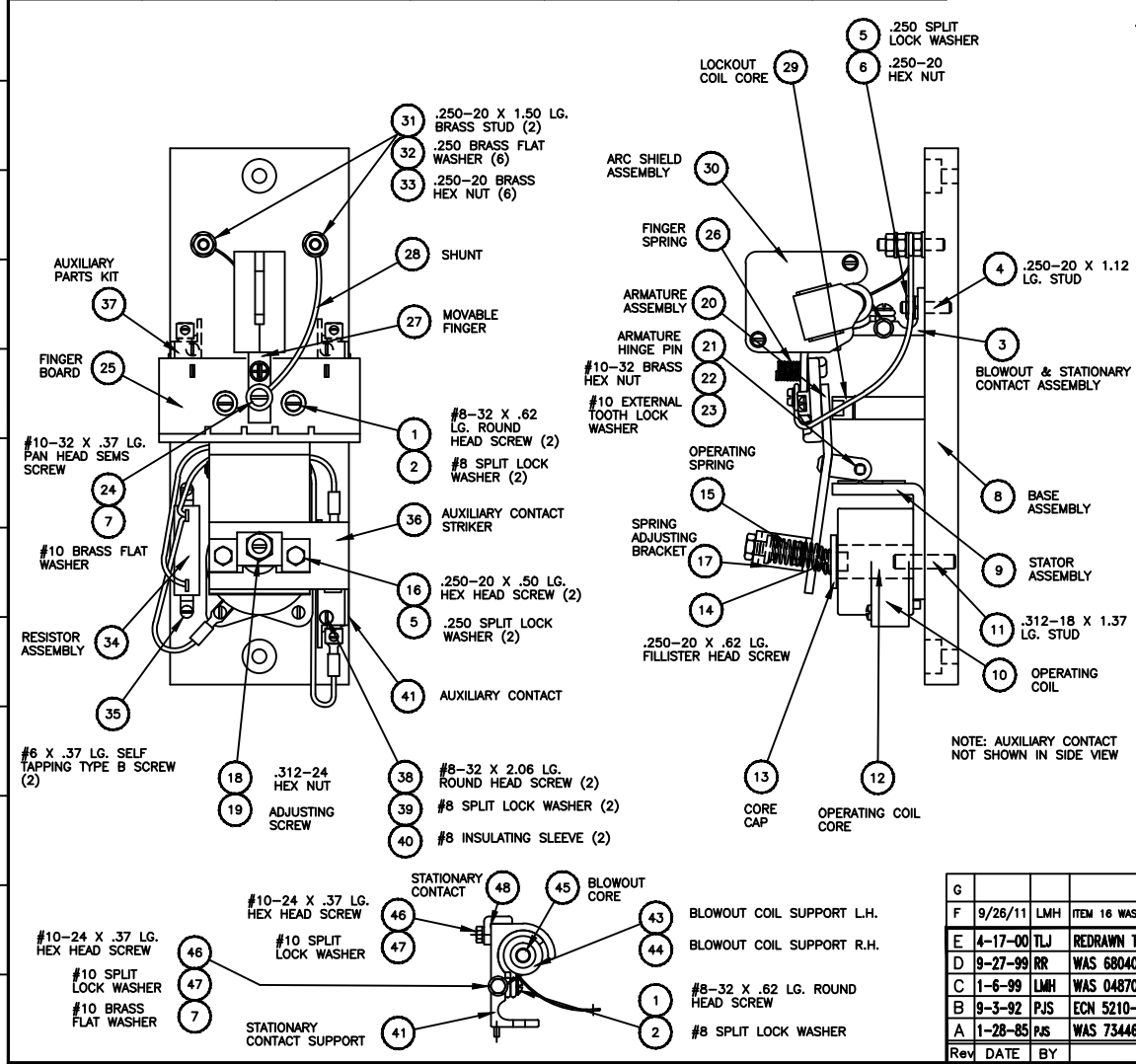


	21	20	19	18	17	16	15	14	13	12	11	10	9	8	7	6	5	4	3	2	1					
	CONTACTOR P/N	BLOWOUT COIL & STATIONARY CONTACT P/N	OPERATING COIL VOLTAGE	ITEM 10 OPERATING COIL P/N	ITEM 27 MOVING FINGER P/N	ITEM 34 RESISTOR ASSEMBLY P/N	ITEM 46 STATIONARY FINGER P/N														RPC-58870-3					
P	58870-013	58851-101	230/250	68014-002	05721-000	73447-002	02315-000																			
	58870-014	58851-102																								
	58870-015	58851-103																								
O	58870-016	58851-104																								
	58870-017	58851-101																								
	58870-018	58851-102	115/125	68014-003	05721-001	73446-002	02315-001																			
	58870-019	58851-103																								
	58870-020	58851-104																								
N	58870-313	58851-106																								
	58870-314	58851-107																								
	58870-315	58851-108	230/250	68014-002	05721-001	73447-002	02315-001																			
	58870-316	58851-109																								
	58870-317	58851-106																								
M	58870-318	58851-107																								
	58870-319	58851-108																								
	58870-320	58851-109	115/125	68014-003	05721-001	73446-002	02315-001																			

NOTE: FOR ITEM 3, CHOOSE ONLY 1 ITEM (SEE CHART)

NOTE: WHEN ORDERING REPLACEMENT PARTS BE SURE TO FURNISH SERIAL NUMBER AND CATALOG NUMBER WHICH ARE LOCATED ON THE NAMEPLATE. ALSO GIVE PART NUMBER & DESCRIPTION.

ITEM	DESCRIPTION	PART NO.	QTY.
1	#8-32 X .62 LG. ROUND HEAD SCREW	47241-104	3
2	#8 SPLIT LOCK WASHER	47252-064	3
3	BLOWOUT COIL & STATIONARY CONTACT ASSEMBLY (25 AMP BLOWOUT COIL)	58851-101	1
3	BLOWOUT COIL & STATIONARY CONTACT ASSEMBLY (5 AMP BLOWOUT COIL)	58851-102	1
3	BLOWOUT COIL & STATIONARY CONTACT ASSEMBLY (10 AMP BLOWOUT COIL)	58851-103	1
3	BLOWOUT COIL & STATIONARY CONTACT ASSEMBLY (15 AMP BLOWOUT COIL)	58851-104	1
3	BLOWOUT COIL & STATIONARY CONTACT ASSEMBLY (25 AMP BLOWOUT COIL)	58851-106	1
3	BLOWOUT COIL & STATIONARY CONTACT ASSEMBLY (5 AMP BLOWOUT COIL)	58851-107	1
3	BLOWOUT COIL & STATIONARY CONTACT ASSEMBLY (10 AMP BLOWOUT COIL)	58851-108	1
3	BLOWOUT COIL & STATIONARY CONTACT ASSEMBLY (15 AMP BLOWOUT COIL)	58851-109	1
4	.250-20 X 1.125 LG. STUD	66475-035	1
5	.250 SPLIT LOCK WASHER	47252-038	3
6	.250-20 HEX NUT	47253-021	1
7	#10 BRASS FLAT WASHER	47251-008	2
8	BASE ASSEMBLY	58875-001	1
9	STATOR ASSEMBLY	58663-000	1
10	OPERATING COIL	SEE CHART	1
11	.312-18 X 1.37 LG. STUD	57439-010	1
12	OPERATING COIL CORE	58660-001	1
13	CORE CAP	21440-000	1
14	.250-20 X .62 LG. FILLISTER HEAD SCREW	47244-147	1
15	OPERATING SPRING	08778-000	1
16	.250-20 X .50 LG. HEX HEAD SCREW	47246-061	2
17	SPRING ADJUSTING BRACKET	42980-000	1
18	.312-24 HEX NUT	47253-204	1
19	ADJUSTING SCREW	42899-000	1
20	ARMATURE ASSEMBLY	58878-000	1
21	ARMATURE HINGE PIN	18581-000	1
22	#10-32 BRASS HEX NUT	47254-009	1
23	#10 EXTERNAL TOOTH LOCK WASHER	47303-006	1
24	#10-32 X .37 LG. PAN HEAD SEMS SCREW	49137-083	1
25	FINGER BOARD	42005-000	1
26	FINGER SPRING	04657-000	1
27	MOVABLE FINGER	SEE CHART	1
28	SHUNT	04870-002	1
29	LOCKOUT COIL CORE	58880-000	1
30	ARC SHIELD ASSEMBLY	42855-001	1
31	.250-20 X 1.50 LG. BRASS STUD	57438-039	2
32	.250 BRASS FLAT WASHER	47251-041	6
33	.250-20 BRASS HEX NUT	47254-011	6
34	RESISTOR ASSEMBLY	SEE CHART	1
35	#6 X .37 LG. SELF TAPPING TYPE B ROUND HEAD SCREW	47792-008	2
36	AUXILIARY CONTACT STRIKER	59562-001	1
37	PLUNGER AUXILIARY PARTS KIT	68011-003	A/R
38	#8-32 X 2.06 LG. ROUND HEAD SCREW	47241-261	2 OR A/R
39	#8 SPLIT LOCK WASHER	47252-006	2 OR A/R
40	INSULATING SLEEVE	73108-000	2 OR A/R
41	AUXILIARY ASSEMBLY	67976-001	1 OR A/R
42	STATIONARY CONTACT SUPPORT	58661-001	1
43	BLOWOUT COIL SUPPORT L.H.	42872-000	1
44	BLOWOUT COIL SUPPORT R.H.	42871-000	1
45	BLOWOUT COIL CORE	42023-000	1
46	#10-24 X .37 LG. S.S. HEX HEAD SCREW	47779-042	2
47	#10 SPLIT LOCK WASHER	47252-065	2
48	STATIONARY CONTACT	SEE CHART	1



NOTE: AUXILIARY CONTACT NOT SHOWN IN SIDE VIEW

□ NOTE: SINGLE AUXILIARY P/N 67976-001 INCLUDED WITH COMPLETE CONTACTOR. ORDER ADDITIONAL AUXILIARIES AS FOLLOWS: 68011-003 (SINGLE CONTACT BLOCK) INCLUDED ON ITEM 3 BLOWOUT COIL & STATIONARY CONTACT ASSEMBLY

G			
F	9/26/11	LMH	ITEM 16 WAS .375 LG; ECN A11-00097
E	4-17-00	TJL	REDRAWN TO CAD
D	9-27-99	RR	WAS 68040-003
C	1-6-99	LMH	WAS 04870-000
B	9-3-92	PJS	ECN 5210-181
A	1-28-85	PJS	WAS 73446-001 & 73447-001
Rev	DATE	BY	DESCRIPTION

LINEAR	HOLE	ANGLES	DIMEN.
0.X ±.050	PUNCH ±.002		± 1°
0.XX ±.020	±.001		
0.XXX ±.005	±.0005		

SIZE 1 NC CONTACTOR RENEWAL PARTS BULLETIN 25 AMP DC BULL 5210



Hubbell Industrial Controls, Inc. 50 Edwards Street Madison, Oh. 44057

DATE 10-24-84 DR.DON K CK. REF.

DRG. NO 1 OF 1 RPC-58870-3