

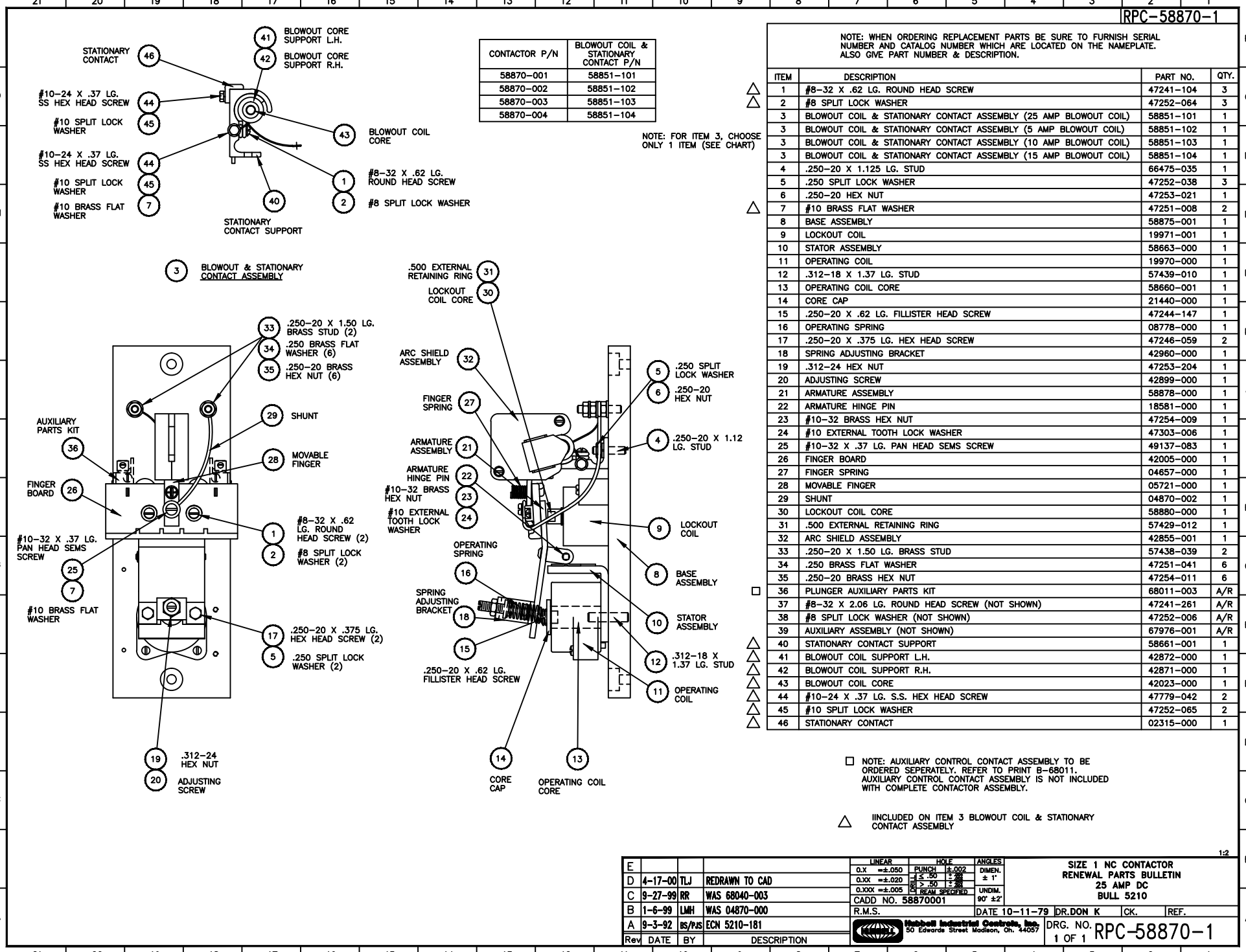
CONTACTOR P/N	BLOWOUT COIL & STATIONARY CONTACT P/N
58870-001	58851-101
58870-002	58851-102
58870-003	58851-103
58870-004	58851-104

NOTE: FOR ITEM 3, CHOOSE ONLY 1 ITEM (SEE CHART)

ITEM	DESCRIPTION	PART NO.	QTY.
1	#8-32 X .62 LG. ROUND HEAD SCREW	47241-104	3
2	#8 SPLIT LOCK WASHER	47252-064	3
3	BLOWOUT COIL & STATIONARY CONTACT ASSEMBLY (25 AMP BLOWOUT COIL)	58851-101	1
3	BLOWOUT COIL & STATIONARY CONTACT ASSEMBLY (5 AMP BLOWOUT COIL)	58851-102	1
3	BLOWOUT COIL & STATIONARY CONTACT ASSEMBLY (10 AMP BLOWOUT COIL)	58851-103	1
3	BLOWOUT COIL & STATIONARY CONTACT ASSEMBLY (15 AMP BLOWOUT COIL)	58851-104	1
4	.250-20 X 1.125 LG. STUD	66475-035	1
5	.250 SPLIT LOCK WASHER	47252-038	3
6	.250-20 HEX NUT	47253-021	1
7	#10 BRASS FLAT WASHER	47251-008	2
8	BASE ASSEMBLY	58875-001	1
9	LOCKOUT COIL	19971-001	1
10	STATOR ASSEMBLY	58663-000	1
11	OPERATING COIL	19970-000	1
12	.312-18 X 1.37 LG. STUD	57439-010	1
13	OPERATING COIL CORE	58660-001	1
14	CORE CAP	21440-000	1
15	.250-20 X .62 LG. FILLISTER HEAD SCREW	47244-147	1
16	OPERATING SPRING	08778-000	1
17	.250-20 X .375 LG. HEX HEAD SCREW	47246-059	2
18	SPRING ADJUSTING BRACKET	42960-000	1
19	.312-24 HEX NUT	47253-204	1
20	ADJUSTING SCREW	42899-000	1
21	ARMATURE ASSEMBLY	58878-000	1
22	ARMATURE HINGE PIN	18581-000	1
23	#10-32 BRASS HEX NUT	47254-009	1
24	#10 EXTERNAL TOOTH LOCK WASHER	47303-006	1
25	#10-32 X .37 LG. PAN HEAD SEMS SCREW	49137-083	1
26	FINGER BOARD	42005-000	1
27	FINGER SPRING	04657-000	1
28	MOVABLE FINGER	05721-000	1
29	SHUNT	04870-002	1
30	LOCKOUT COIL CORE	58880-000	1
31	.500 EXTERNAL RETAINING RING	57429-012	1
32	ARC SHIELD ASSEMBLY	42855-001	1
33	.250-20 X 1.50 LG. BRASS STUD	57438-039	2
34	.250 BRASS FLAT WASHER	47251-041	6
35	.250-20 BRASS HEX NUT	47254-011	6
36	PLUNGER AUXILIARY PARTS KIT	68011-003	A/R
37	#8-32 X 2.06 LG. ROUND HEAD SCREW (NOT SHOWN)	47241-261	A/R
38	#8 SPLIT LOCK WASHER (NOT SHOWN)	47252-006	A/R
39	AUXILIARY ASSEMBLY (NOT SHOWN)	67976-001	A/R
40	STATIONARY CONTACT SUPPORT	58661-001	1
41	BLOWOUT COIL SUPPORT L.H.	42872-000	1
42	BLOWOUT COIL SUPPORT R.H.	42871-000	1
43	BLOWOUT COIL CORE	42023-000	1
44	#10-24 X .37 LG. S.S. HEX HEAD SCREW	47779-042	2
45	#10 SPLIT LOCK WASHER	47252-065	2
46	STATIONARY CONTACT	02315-000	1

NOTE: AUXILIARY CONTROL CONTACT ASSEMBLY TO BE ORDERED SEPARATELY. REFER TO PRINT B-68011. AUXILIARY CONTROL CONTACT ASSEMBLY IS NOT INCLUDED WITH COMPLETE CONTACTOR ASSEMBLY.

INCLUDED ON ITEM 3 BLOWOUT COIL & STATIONARY CONTACT ASSEMBLY



REV	DATE	BY	DESCRIPTION	LINEAR	HOLE	ANGLES	SIZE 1 NC CONTACTOR RENEWAL PARTS BULLETIN 25 AMP DC BULL 5210
E				O.X ±.050	PUNCH ±.002	DIMEN. ± 1'	DRG. NO. 1 OF 1 RPC-58870-1
D	4-17-00	TLJ	REDRAWN TO CAD	O.XX ±.020	5-50 ±.002		
C	9-27-99	RR	WAS 68040-003	O.XXX ±.005	REAM SPECIFIED	UNDM. 90° ±2'	
B	1-6-99	LMH	WAS 04870-000				
A	9-3-92	BS/PJS	ECN 5210-181				

